



16820 Bass Highway, Flowerdale

YOUR NEW LIFE IN THE COUNTRY REDUCED TO SELL!!

Discover a fantastic opportunity to embrace country living with this charming property, just on the outskirts of Wynyard.


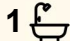
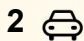
Located in picturesque Flowerdale and only a 5 minute drive from Burnie/Wynyard Airport, this property is perfect for those seeking tranquility without sacrificing convenience.

This gorgeous 1900s character home sits on approximately 2.023 hectares (approx. 5 acres) of land, offering plenty of space to enjoy the outdoors.

Featuring three generous bedrooms, two of which boast open fireplaces, adding a touch of classic charm. The open-plan kitchen and living area is sunfilled with a lovely outlook over the property. Throughout the cooler months the home is kept warm by wood heating.

- Character Home set on approx. 5 acres
- Beautifully presented throughout.
- Freshly painted, new carpets and window furnishings.
- Updated kitchen, second toilet with basin
- Rewired
- Numerous outbuildings, stable, sheds.

All information contained therein is gathered from relevant third parties sources. We cannot guarantee or give any warranty about the information provided. Interested parties must rely solely on their own enquiries.

3  1  2 

FOR SALE
\$495,000

VIEW
By Appointment

AGENTS

Keryn Newman
0427 539 989
knewman.wynyard@ljhooker.com.au

Theresa Button
0419 395 274
tbutton.wynyard@ljhooker.com.au

AGENCY

LJ Hooker Wynyard
(03) 6442 3477

 **LJ Hooker**

Do not miss out on the chance to make this delightful property your own and experience the best of country living!

Contact Keryn today for further details.

- *** The information on this website has been provided to LJ Hooker Wynyard by third parties. While LJ Hooker Wynyard have taken every care to verify the accuracy of the property details this information should not be relied upon and you should make your own enquiries and seek legal advice in respect of any property on the Website. All measurements are approximates ****

MORE DETAILS

| | |
|---------------|-------------------|
| Property ID | JT2FD3 |
| Property Type | AcreageSemi-rural |
| House Size | 151 m2 |
| Land Area | 2.02 hectare |
| Including | Toilets (2) |

Keryn Newman 0427 539 989

Real Estate Agent | knewman.wynyard@ljhooker.com.au

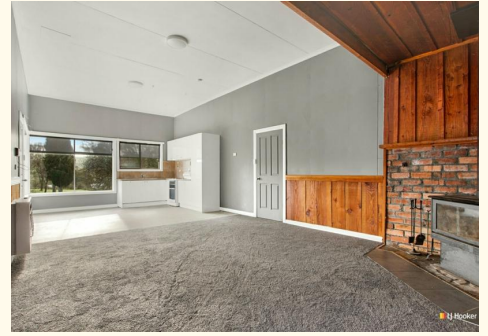
Theresa Button 0419 395 274

Sales Consultant | tbutton.wynyard@ljhooker.com.au

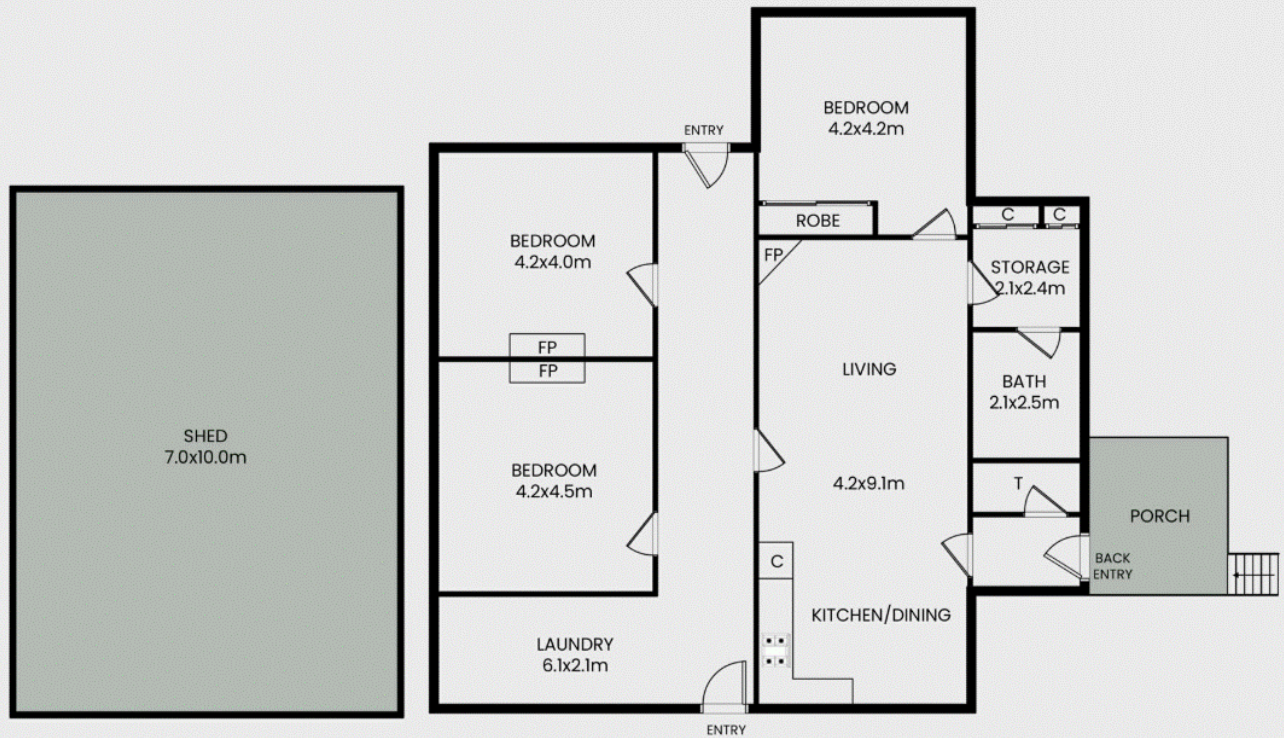
LJ Hooker Wynyard (03) 6442 3477

98 Goldie Street, WYNYARD TAS 7325

wynyard.ljhooker.com.au | wynyard@ljhooker.com.au



6820 Bass Highway, Flowerdale



FLOOR PLAN

This floor plan including furniture, fixture measurements and dimensions are approximate and for illustrative purposes only. 3oxBrownie.com gives no guarantee, warranty or representation as to the accuracy and layout. All enquiries must be directed to the agent, vendor or party representing this floor plan.

All information contained therein is gathered from relevant third parties sources. We cannot guarantee or give any warranty about the information provided. Interested parties must rely solely on their own enquiries.

