



212 Bushman Drive, Flagstone

SOLD By Renee Czapla!

A Property Like No Other | Built for Family Living, Business Success & Lifestyle Freedom

Where else can you find a large, luxury family home AND every shed lover's dream, all wrapped into one unbeatable package? Set on 2 private, fully secured acres, this powerhouse property is built for families who want space, tradies or truckies chasing their dreams, and car collectors craving serious storage. With multiple sheds and accommodation for trucks, caravans or multiple cars, a massive workshop, stables, and more, this is not your standard acreage property! IT'S A GAME CHANGER!

Like nothing you have seen before, let me step you through what this incredible property has to offer:

The Home | Grand & Immaculate

- " 394m² under roof and a quality AV Jennings build
- 10ft ceilings upon entry, wide halls and an incredible floorplan accommodating the entire family + some!
- 4 oversized bedrooms plus study/5th bedroom
- Super King Sized Master with ensuite & his & hers WIRs
- 2.5 bathrooms and large internal laundry
- Multiple living zones including oversized family room, living room, games room + multipurpose room

5 🚗 2 🚐 12 🚘

FOR SALE
\$1,450,000+

AGENTS

Renee Czapla
0403 592 280
rczapla@ljhcomplete.com.au

AGENCY

LJ Hooker Property Complete
1300 360 388

All information contained therein is gathered from relevant third parties sources. We cannot guarantee or give any warranty about the information provided. Interested parties must rely solely on their own enquiries.



- Spacious & very functional kitchen with wall oven, induction cooktop, dishwasher & loads of storage
- " Ducted air conditioning throughout —26kw commercial grade system
- Immaculately maintained and presented
- Plus a huge 25m x 3.2m outdoor entertaining area flowing to fully fenced house yard perfect for the kids and pets

Sheds | Storage | Serious Infrastructure

- 12++ car accommodation and room for the trucks, caravans and boats!
- Shed 1: 21m x 14m x 4.2m workshop, lunchroom and mezzanine - the opportunities are endless!!
- Shed 2: 24m x 8m x 4.2m with 7 roller doors
- Stables 3.5m x 15m
- Internal Garage (2 cars) + Carport attached to the house (3 cars)
- 2 x electric gates with secure access to workshop
- Fully fenced, part colorbond for ultimate privacy

The Extras That Seal the Deal

- 20kw solar
- 3 phase power to sheds and house + generator converter switch
- Solar hot water 350L
- 4 x 27,000L + 1 x 30,000L water tanks (with trickle feed & HSTP)
- Immaculately presented, private & secure

Whether you're a tradie, truckie, mechanic, horse lover or car enthusiast, or simply someone who wants to live large with room for it ALL —this property offers the lifestyle you've been chasing... and then some.

Opportunities like this are RARE! Contact Renee Czaplá to arrange your private inspection or join us at the open home. We look forward welcoming you home.

Disclaimer:

Property images may have been digitally altered or staged for marketing purposes and may not constitute a complete representation of the property condition being purchased. Any photographs used by LJ Hooker may only show certain aspects of the property at the time the photographs are taken and any prospective buyer should inspect the property.

MORE DETAILS

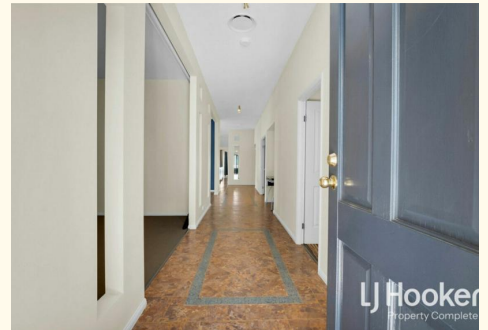
Property ID	20E0HGS
Property Type	House
House Size	394 m2
Land Area	8039 m2
Including	Ensuite
	Ducted Cooling
	Ducted Heating
	Toilets (3)
	Dishwasher
	Outdoor Entertaining
	Workshop
	Built-in-Robes
	Fully Fenced
	Water Tank

Renee Czaplá 0403 592 280

Sales Consultant | rczapla@ljhcomplete.com.au

LJ Hooker Property Complete 1300 360 388

Level 1, 32 Everglade Street, YARRABILBA QLD 4207
propertycomplete.ljhooker.com.au | admin@ljhcomplete.com.au



All information contained therein is gathered from relevant third parties sources.
We cannot guarantee or give any warranty about the information provided.
Interested parties must rely solely on their own enquiries.

212 Bushman Drive, Jimboomba



4 | 2 | 12 | 448 Sqm | |

Total approx area includes outside covered areas



SITE PLAN

Whilst every attempt has been made to ensure the accuracy of the floorplan shown, all measurements, positioning, fixtures, fittings and any other data shown are an approximate interpretation for illustrative purposes only and are not to scale. No responsibility is taken for any error, omission, miss-statement or use of data shown

All information contained therein is gathered from relevant third parties sources. We cannot guarantee or give any warranty about the information provided. Interested parties must rely solely on their own enquiries.

