



Flagstaff Hill, 48 Bellaview Road

Charming Family Home In Tranquil Location

Nestled in the serene embrace of Flagstaff Hill's leafy suburb, this home presents a wonderful opportunity for those seeking comfort, space, and captivating views. Ideally positioned on a corner block with generous street frontage, this home offers a blend of modern convenience and scenic tranquility.

Upon entry, be greeted by a flood of natural light cascading into the elegant formal living area, boasting stunning, captivating views of the foothills in the near distance. The kitchen, thoughtfully updated to exude a modern ambiance, overlooks the rear yard, featuring a suite of amenities including an all in one gas cooktop and oven, ample cupboard space, and expansive benchtops for culinary creativity. Adjacent is the inviting meals area, perfect for casual dining and gatherings.

3 2 2

For Sale

\$769,000 – \$799,000

View

ljhooker.com.au/PMRGW0

Contact

Jarad Henry

0418 842 701

jarad@ljhglenelgbrighton.com.au

Trinity Egglestone

trinity@ljhglenelgbrighton.com.au



Disclaimer: All information contained therein is gathered from relevant third parties sources. We cannot guarantee or give any warranty about the information provided. Interested parties must rely solely on their own enquiries.

LJ Hooker Glenelg | Brighton
(08) 8294 6000

The spacious second living room, adjoining the kitchen and study area, spans a generous 5.9m x 4.4m, offering versatility as a vast home theatre or an exciting games room. Three bedrooms, all equipped with built-in robes, accompany the main bedroom featuring an ensuite. An additional open study sits opposite the kitchen, perfect for accommodating work or study needs.

All three bedrooms are equipped with built-in robes whilst the main bedroom features a modern ensuite. An additional open study sits opposite the kitchen, perfect for accommodating work or study needs. The updated main bathroom exhibits a shower, a full-size bath, and a single vanity with ample storage. The separate laundry offers convenient access outside for added ease.

Step outside, and you'll discover an entertainer's haven with an undercover entertaining area and ample lawn space for kids to play and pets to frolic. Car accommodation is a breeze with the oversized double garage providing not only space for your vehicles but also extra room for storage.

This impeccable home caters to a variety of discerning buyers, from first-time homeowners to growing families and savvy investors. Its central location offers easy access to an array of shopping and caf#233; options at Westfield Marion, The Hub, and O'Halloran Hill. Plenty of school options at Flagstaff Hill Primary, Seaview High School, Craighburn Primary, and Our Saviour Lutheran College are conveniently close by.

If you're yearning for a leafy change that combines comfort, convenience, and captivating views, your search ends here. Do not miss the opportunity to make this superb property your new home!

Property Details:

Council: City of Onkaparinga

Land Size: 816sqm

House Size: 157sqm

Year Built: 1976

Council Rates: \$1,978pa

SA Water Supply: \$683.64pa

For further information please contact Jarad Henry or Trinity Egglestone.

Visit glenelgbrighton.ljhooker.com.au to view other LJ Hooker Glenelg | Brighton Listings.

Disclaimer: Neither the Agent nor the Vendor accept any liability for any error or omission in this advertisement.

Any prospective purchaser should not rely solely on 3rd party information providers to confirm the details of this property or land and are advised to enquire directly with the agent in order to review the certificate of title and local government details provided with the completed Form 1 vendor statement.

RLA 182909



LJ Hooker Glenelg | Brighton
(08) 8294 6000

Disclaimer: All information contained therein is gathered from relevant third parties sources. We cannot guarantee or give any warranty about the information provided. Interested parties must rely solely on their own enquiries.

More About this Property

Property ID PMRGW0

Property Type House

House Size 157 m²

Land Area 816 m²

Jarad Henry

Principal & Sales Consultant | jarad@ljhglenelgbrighton.com.au

Trinity Egglestone

Sales Associate | trinity@ljhglenelgbrighton.com.au

LJ Hooker Glenelg | Brighton (08) 8294 6000

76 Oaklands Road, SOMERTON PARK SA 5044

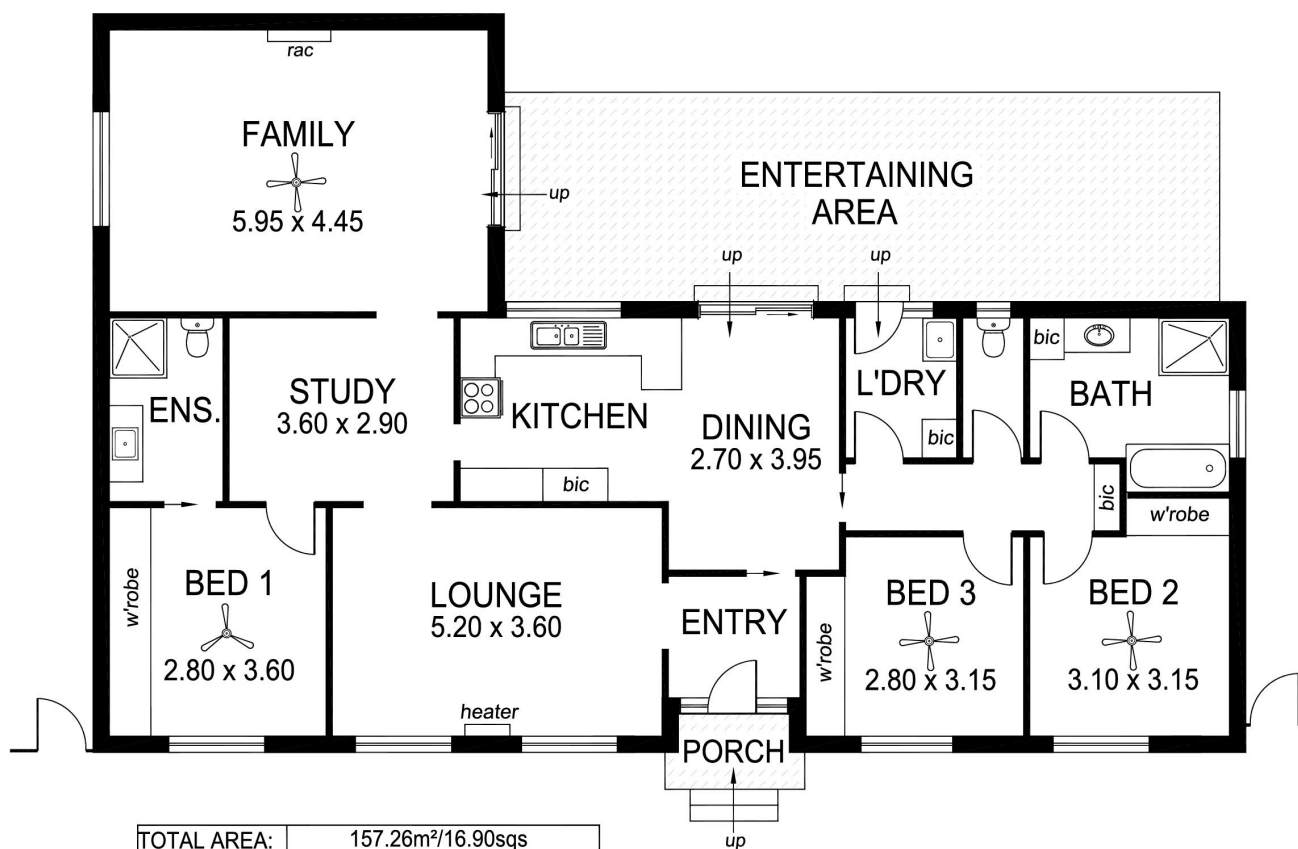
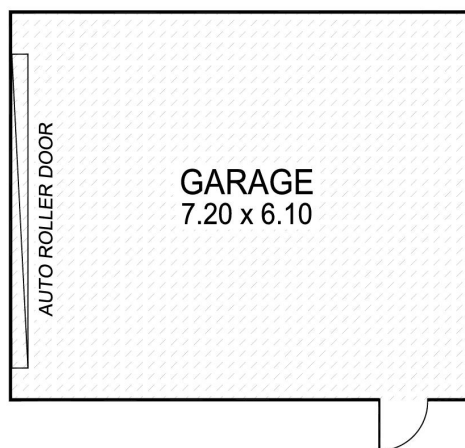
glenelgbrighton.ljhooker.com.au | rebecca@ljhglenelgbrighton.com.au



LJ Hooker Glenelg | Brighton
(08) 8294 6000

Disclaimer: All information contained therein is gathered from relevant third parties sources. We cannot guarantee or give any warranty about the information provided. Interested parties must rely solely on their own enquiries.

SIDE
ACCESS



TOTAL AREA:	157.26m ² /16.90sqs
(Estimate only)	(incl. porch)

This drawing is for illustration purposes only.
All measurements are approximate only and information
intended to be relied upon should be independently verified.