

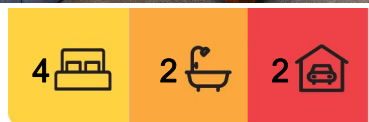


## Fitzherbert, 71 Johnstone Drive

### Perfect Family Living in Fitzherbert

Discover your perfect home in a family friendly location. This three year old residence boasts all the features you need for comfortable living and lifestyle. The designer of this home has paid great attention to the floor plan which not only maximises space but is designed to capture the best of the sun. The open plan living has ranch sliders leading onto a deck area and the kitchen is perfect for all social occasions – plenty of bench space!

Enjoy the benefits of a low maintenance home – the decor throughout reflects the latest colours and design and allows enough scope for you to add your own touches. Attention to detail and ease of living makes this home stand out from the rest. On a private section and within a short drive to the local supermarket and other amenities, this is an excellent home with all the modern conveniences.



#### For Sale

Enquiries Over \$985000

#### View

[ljhooker.co.nz/W34GFB](http://ljhooker.co.nz/W34GFB)

#### Contact

##### Steve Allen

0274 994 607

[steve.allen@ljhookerpn.co.nz](mailto:steve.allen@ljhookerpn.co.nz)

##### Louise Allen

021 415 940

[louise.allen@xtra.co.nz](mailto:louise.allen@xtra.co.nz)



**Disclaimer:** All information contained therein is gathered from relevant third parties sources. We cannot guarantee or give any warranty about the information provided. Interested parties must rely solely on their own enquiries.

**LJ Hooker Palmerston North**  
**(06) 358 9009**

Manawatu (1994) Ltd

A true entertainers kitchen – gather with your family and friends  
 Generous decking areas  
 Two large separate living  
 Archgola roof – covered outdoor living area  
 Double glazed  
 Two bathrooms  
 Great storage  
 Ducted air conditioning  
 Landscaped 640m2 section  
 Garden shed

If this property sounds like your kind of home, don't delay – you could be the next lucky owner. Call Steve Allen on 0274 994607 or Louise Allen on 021 415 940 for more details or to make an appointment to view.

## More About this Property

<b>Property ID</b>	W34GFB
<b>Property Type</b>	House
<b>House Size</b>	213 m²
<b>Land Area</b>	640 m²
<b>Including</b>	Ensuite Toilets (2)

**Licensed Real Estate Agents (REAA2008)**

**Steve Allen 0274 994 607**

Principal | [steve.allen@ljhookerpn.co.nz](mailto:steve.allen@ljhookerpn.co.nz)

**Louise Allen 021 415 940**

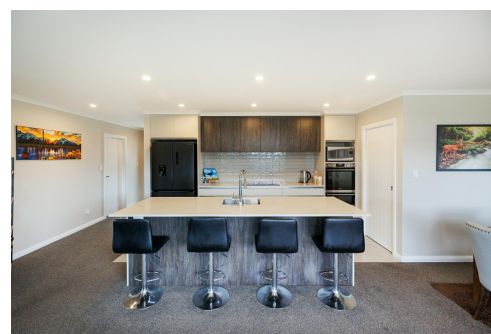
Residential Marketing Consultant | [louise.allen@xtra.co.nz](mailto:louise.allen@xtra.co.nz)

**LJ Hooker Palmerston North (06) 358 9009**

Manawatu (1994) Ltd

219 Broadway Avenue, PALMERSTON NORTH 4414

[palmerstonnorth.ljhooker.co.nz](http://palmerstonnorth.ljhooker.co.nz) | [reception@ljhookerpn.co.nz](mailto:reception@ljhookerpn.co.nz)



**Disclaimer:** All information contained therein is gathered from relevant third parties sources.

We cannot guarantee or give any warranty about the information provided. Interested parties must rely solely on their own enquiries.

**LJ Hooker Palmerston North  
(06) 358 9009**

Manawatu (1994) Ltd