

## Fitzherbert, 48 Sardinia Grove

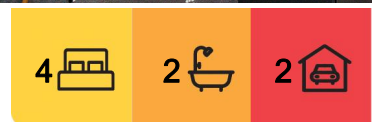
Priced to sell! Unbeatable value with views!

Check this out for unbeatable value!!! Priced to sell! All reasonable offers considered!!

Luxury brick home built in 2020, with stunning viewings! In sought after Summerhill cul-de-sac on a generous 956m2 (more or less) section. This four-bedroom home plus study nook, combines luxury and functionality, making it the ultimate family entertainer.

Step inside to a spacious, light-filled interior, enhanced by superb finishes and high stud ceilings. The entertainer's kitchen boasts a sleek, modern design, complete with a scullery, double oven, and an open-plan layout that flows effortlessly into the dining and family living areas, as well as a separate formal lounge. The living spaces extend out to an expansive wrap-around deck, perfect for seamless indoor-outdoor entertaining.

Comfort is assured year-round with two heat pumps, a gas log burner, smart vent system and double glazing throughout. The master bedroom serves as a private retreat, offering a



**For Sale**

Enquiries Over \$999,000

**View**

[ljhooker.co.nz/W9ZGFB](http://ljhooker.co.nz/W9ZGFB)

**Contact**

**Angela Martin**

027 739 3370

[angela.martin@ljhookerpn.co.nz](mailto:angela.martin@ljhookerpn.co.nz)



**Disclaimer:** All information contained therein is gathered from relevant third parties sources.

We cannot guarantee or give any warranty about the information provided. Interested parties must rely solely on their own enquiries.

**LJ Hooker Palmerston North**

**(06) 358 9009**

Manawatu (1994) Ltd



serene outlook and a luxurious ensuite with a fully tiled shower, heated floors, and a walk-in wardrobe. The remaining double bedrooms share a beautifully appointed family bathroom, complemented by a separate toilet and ample storage throughout.

Set on a fully fenced section with private street frontage, this property is a family paradise, offering plenty of space for children and pets to play. The carpeted double internal garage, complete with a dedicated laundry room, adds to the home's convenience, while the alarm system and pre-wiring for security cameras provide an extra layer of peace of mind.

Located in a sought-after location, close to the Summerhill Shopping Centre, Massey University and IPC. With easy access to walking and biking tracks, and zoned for excellent schools, this home is perfectly positioned for families. Vendors are meeting the market, don't miss this opportunity to make this exceptional home yours!

## More About this Property

<b>Property ID</b>	W9ZGFB
<b>Property Type</b>	House
<b>House Size</b>	227 m <sup>2</sup>
<b>Land Area</b>	956 m <sup>2</sup>
<b>Licensed Real Estate Agents (REAA2008)</b>	

**Angela Martin 027 739 3370**

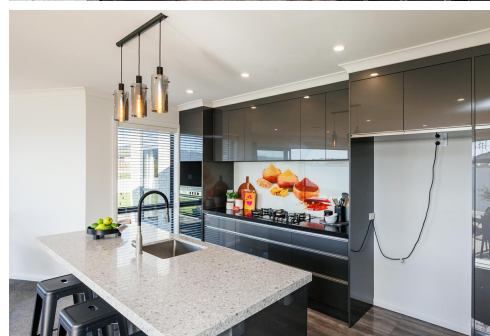
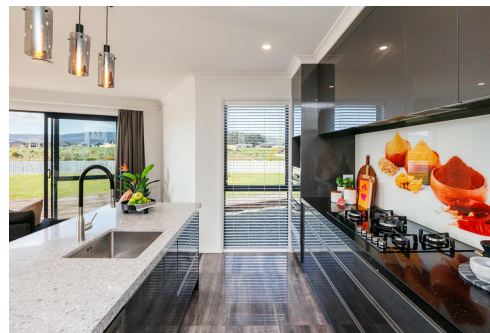
Residential & Lifestyle Sales Specialist | [angela.martin@ljhookerpn.co.nz](mailto:angela.martin@ljhookerpn.co.nz)

**LJ Hooker Palmerston North (06) 358 9009**

Manawatu (1994) Ltd

219 Broadway Avenue, PALMERSTON NORTH 4414

[palmerstonnorth.ljhooker.co.nz](mailto:palmerstonnorth.ljhooker.co.nz) | [reception@ljhookerpn.co.nz](mailto:reception@ljhookerpn.co.nz)



**Disclaimer:** All information contained therein is gathered from relevant third parties sources. We cannot guarantee or give any warranty about the information provided. Interested parties must rely solely on their own enquiries.

**LJ Hooker Palmerston North**  
**(06) 358 9009**  
Manawatu (1994) Ltd