

## Fitzgibbon, 14/5 Hibiscus Circuit

### Spacious 3 Bedroom Townhouse —Walk to Train

Auction Location: On-Site

Auction Saturday 19 July 2025 at 9.30am Onsite

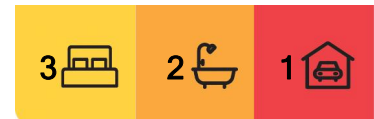
Perfectly positioned within the fastidiously maintained "Grevillea Gardens", this townhouse offers a north/south facing aspect and a spacious internal floorplan. The complex is just an approximate 5-minute walk to the Carseldine train station.

The floorplan includes 3 bedrooms, 2 bathrooms (plus a 3rd toilet downstairs) lounge area, tiled meals area and a kitchen with a breakfast bar. The kitchen and meals area extends out to a paved courtyard and garden. Buyers needing car accommodation will appreciate the single lock-up garage, plus additional visitor parks within the complex.

The townhouse is ideally positioned within an approximate 10-minute drive of Bracken



**Disclaimer:** All information contained therein is gathered from relevant third parties sources. We cannot guarantee or give any warranty about the information provided. Interested parties must rely solely on their own enquiries.



**For Sale**  
Under contract by Daniel Waters

**View**  
By Appointment

**Contact**  
**Daniel Waters**  
0412 847 849  
dwaters@ljhooker.com.au

**LJ Hooker Aspley | Cherside**  
**(07) 3263 6022**

Ridge Plaza (Coles) and Taigum Shopping Centre (Coles & Aldi). Positioned within the tightly held enclave of Fitzgibbon, the location is within approximately 13km of CBD, a short drive from Westfield Chermside Shopping Centre and provides easy access to the Brisbane Airport, Sunshine Coast and Gold Coast. Being a family friendly location, there are a variety of excellent public and private schools within a convenient distance, including the recently completed Holy Spirit Catholic High School, which has further amplified demand within this high growth pocket. Additionally, the popular retail development known as the "Nest" is close by and provides a coffee shop, restaurants, childcare and retail specialty stores.

Special Features include -

- \* A two-storey townhouse within a well-maintained complex
- \* 3 sizeable built-in bedrooms; Master bedroom with ensuite.
- \* Spacious lounge area
- \* The kitchen has plenty of bench space and storage
- \* A tiled meals area adjoins the kitchen
- \* A family bathroom with bath, shower and toilet
- \* Single lock-up garage with internal access
- \* Internal laundry
- \* A north facing courtyard and garden
- \* A desirable position within walking distance of the Carseldine Train Station and just a short drive to Coles, Aldi and Westfield Chermside Shopping Centre

For further information, please contact Daniel Waters.

\*\* Disclaimer: \*\* This property is being sold by auction or without a price and due to REIQ legislation a price guide isn't available. The website possibly filtered this property into a price range for functionality purposes. Any estimates are not provided by the agent and should not be taken as a price guide. Whilst every effort has been made to ensure the accuracy of these particulars, no warranty is given by the vendor or the agent as to their accuracy. Interested parties should not rely on these particulars as representations of fact but must instead satisfy themselves by inspection or otherwise.

## More About this Property

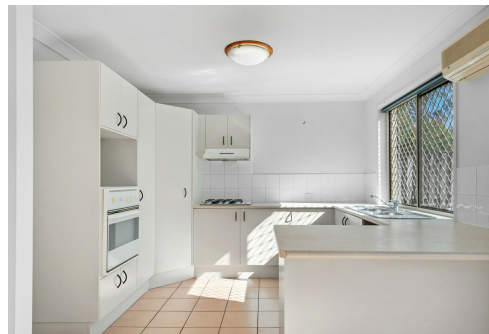
|                      |           |
|----------------------|-----------|
| <b>Property ID</b>   | 3AD6F1R   |
| <b>Property Type</b> | Townhouse |
| <b>Land Area</b>     | 135 m2    |

**Daniel Waters 0412 847 849**

Business Owner, Sales Consultant and Registered Valuer |  
dwaters@ljhooker.com.au

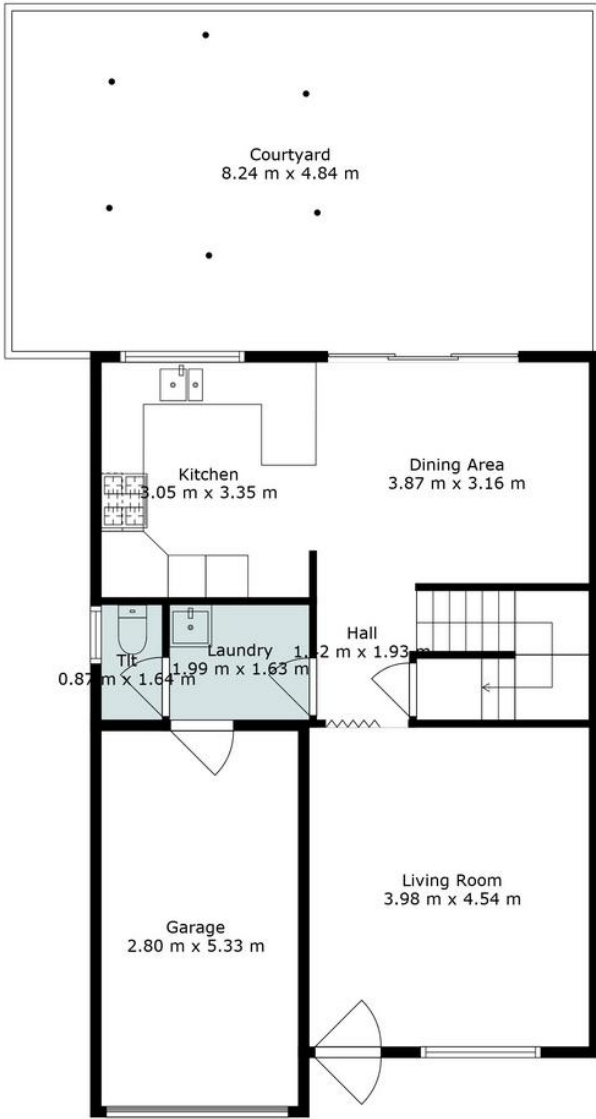
**LJ Hooker Aspley | Chermside (07) 3263 6022**

1359 Gympie Road, ASPLEY QLD 4034  
aspley.ljhooker.com.au | aspley@ljhooker.com.au

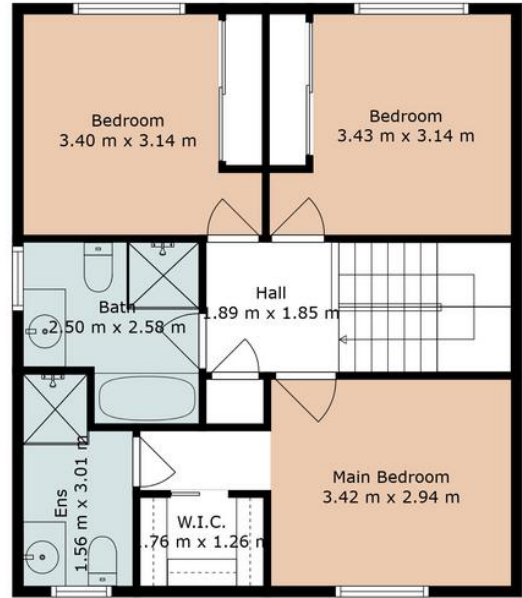


**LJ Hooker Aspley | Chermside  
(07) 3263 6022**

**Disclaimer:** All information contained therein is gathered from relevant third parties sources. We cannot guarantee or give any warranty about the information provided. Interested parties must rely solely on their own enquiries.



Floor 1



Floor 2

Whilst every attempt has been made to ensure accuracy, Floor Plans are representative and should be used as a guide only