



2 Heathcote Lane, Fitzgibbon




## MODERN COMFORT, EFFORTLESS STYLE

Tucked away in a quiet pocket of Fitzgibbon, this stylish two-bedroom townhouse perfectly balances modern comfort with low-maintenance living. Thoughtfully designed and beautifully presented, it's ideal for first-home buyers, downsizers, or savvy investors looking for a property that truly feels like home.

Step inside to a light-filled living space where neutral tones and quality finishes create an inviting atmosphere. The sleek kitchen sits at the heart of the home - complete with stainless-steel appliances, gas cooking, and plenty of storage - overlooking the open-plan living and dining area. Glass sliders flow out to a private courtyard with a covered patio, offering the perfect spot for morning coffees, weekend BBQs, or evening unwinds under the string lights.

Upstairs, two generous bedrooms provide comfort and privacy. The main includes built-in robes and air-conditioning, while the second bedroom offers flexibility for guests, a home office, or creative space. A modern main bathroom and convenient powder room downstairs make daily living effortless.

Practical touches like a remote lock-up garage, internal laundry, and

2  2  1 

**FOR SALE**  
INVITING ALL OFFERS

### AGENTS

Jason Wagner  
0457 704 071  
jwagner.albanycreek@ljhooker.com.au

Charly Wagner  
thejasonwagnerteam@ljhooker.com.au

### AGENCY

LJ Hooker Albany Creek | Warner  
(07) 3264 9000

All information contained therein is gathered from relevant third parties sources.  
We cannot guarantee or give any warranty about the information provided.  
Interested parties must rely solely on their own enquiries.



easy-care gardens make this townhouse as functional as it is stylish. Move in, relax, and enjoy everything this friendly, connected community has to offer.

#### Features Include:

- 2 spacious bedrooms with built-ins, main with air-conditioning
- Modern kitchen with stainless-steel appliances, gas cooking & dishwasher
- Open-plan living and dining with split-system air-conditioning
- Covered outdoor patio with low-maintenance courtyard
- Full bathroom upstairs + powder room downstairs
- Remote lock-up garage with internal access
- Neutral colour palette and plenty of natural light
- Perfect for first-home buyers, investors, or those seeking a simpler lifestyle

#### Location Highlights:

- 200m to the nearest bus stop for easy city commuting
- minute drive to Carseldine Train Station
- minute drive to Fitzgibbon Community Centre, parks & playgrounds
- " minute drive to Taigum Village (Woolworths, cafés & local shops)
- " minute drive to Carseldine Central (Coles, dining & services)
- " minute drive to Westfield Chermside —Brisbane's premier shopping & dining destination
- minute drive to Holy Spirit College, Fitzgibbon
- minute drive to St Flannan's Catholic School
- minute drive to Taigum State School
- minute drive to Aspley State High School

#### Disclaimer:

"Information contained on any marketing material, website or other portal should not be relied upon. You should make your own enquiries and seek your own independent advice with respect to any property advertised or the information about the property."

"LJ Hooker Property Connections also offer a property management service. If you're considering renting your property, are looking to buy or would like a free review of your current portfolio, please call our main office on (07) 3264 9000."

#### MORE DETAILS

Property ID	1U08F1H
Property Type	House
Land Area	88 m2
Including	Study
	Air Conditioning
	Toilets (2)
	Dishwasher
	Built-in-Robes
	Fully Fenced

#### Jason Wagner 0457 704 071

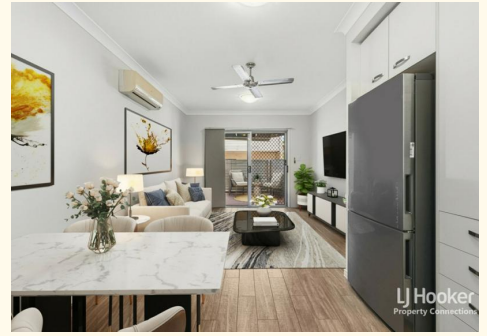
Sales Consultant | [jwagner.albanycreek@ljhooker.com.au](mailto:jwagner.albanycreek@ljhooker.com.au)

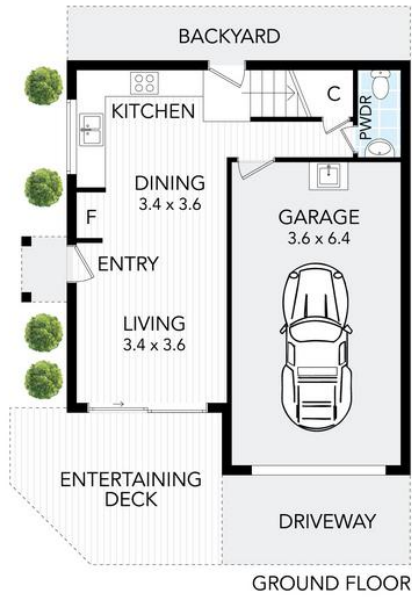
#### Charly Wagner

Sales Consultant - The Jason Wagner Team | [thejasonwagnerteam@ljhooker.com.au](mailto:thejasonwagnerteam@ljhooker.com.au)

#### LJ Hooker Albany Creek | Warner (07) 3264 9000

699 Albany Creek Road, ALBANY CREEK QLD 4035  
[albanycreek.ljhooker.com.au](http://albanycreek.ljhooker.com.au) | [albanycreek@ljhooker.com.au](mailto:albanycreek@ljhooker.com.au)





2 Heathcote Lane, **Fitzgibbon**

All dimensions are approximate; they may be subject to errors and inaccuracies, and no liability will be accepted. Plans are shown for marketing purpose only.

2 2 1 118m<sup>2</sup>

**LJ Hooker**  
Property Connections