



LJ Hooker



LJ Hooker



LJ Hooker



LJ Hooker

Fisher, 189 Namatjira Drive

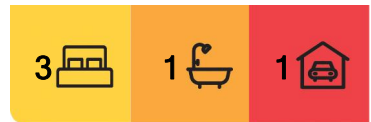
The Family in Mind

An exciting move interstate means this home has become available and offers the perfect opportunity to enter the market and grow your family. The practical layout featuring timber flooring adds to the warm feel as you step inside.

The kitchen is the heart of the home, featuring a new gas cooktop, island bench and plenty of cupboard space. Surrounded by the generous open plan living.

The kitchen meals flow out to the expansive deck and pergola. Beyond the family and pet friendly backyard offers plenty of space while still being low maintenance.

Moments away from amenities including schools Chapman Primary, Saint John Vianney's and Mount Stromlo High. You'll find convenience in shopping at Coleman Court and Westfield Woden.



For Sale
Please Call

View
ljhooker.com.au/HP0DGF8H

Contact
George Vlandis
0437 398 774
gvlandis@ljhbelconnen.com.au
Biba Berjaoui
0439 393 149
bberjaoui@ljhbelconnen.com.au

EER ★★★★★



LJ Hooker Belconnen
(02) 6251 1477

Disclaimer: All information contained therein is gathered from relevant third parties sources. We cannot guarantee or give any warranty about the information provided. Interested parties must rely solely on their own enquiries.

- * Open plan living, meals and kitchen
- * Three bedrooms, two with built in robes
- * Bathroom and two toilets
- * Timber flooring throughout
- * Evaporative cooling
- * Ducted heating
- * Large deck and pergola
- * Drive through garage
- * Solar panels

- * Build Year: 1974
- * Land Size: 792sqm
- * Living Size: 125sqm
- * Garage Size: 28sqm
- * EER: 4.5
- * Rates: \$3,366 p.a.
- * Land Tax: \$6,331 p.a. (investors only)

Disclaimer:

All information contained herein is gathered from external sources we consider to be reliable. However, we cannot guarantee or give any warranty about the information provided. Interested parties must solely rely on their own enquiries and satisfy themselves in all respects.

More About this Property

Property ID	HP0DGF8H
Property Type	House
House Size	125 m2
Land Area	792 m2
EER	4.5

George Vlandis 0437 398 774

Sales Agent | gvlendis@ljhbelconnen.com.au

Biba Berjaoui 0439 393 149

Sales Associate | bberjaoui@ljhbelconnen.com.au

LJ Hooker Belconnen (02) 6251 1477

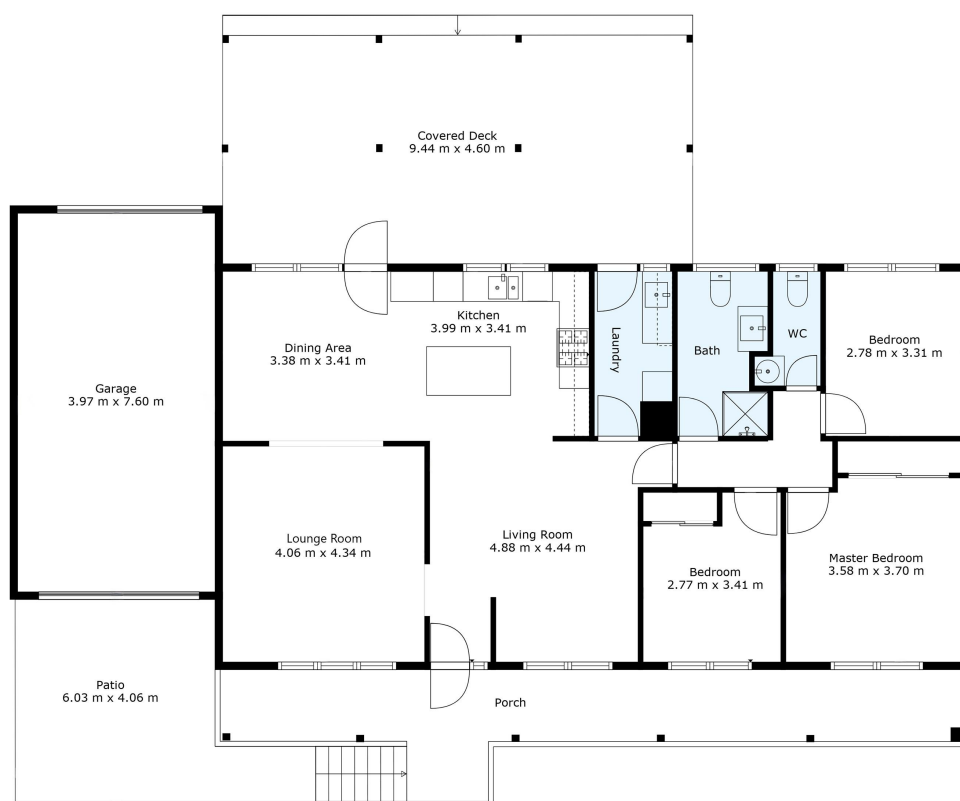
Shop 9, 21 Benjamin Way, BELCONNEN ACT 2617

belconnen.ljhooker.com.au | belconnen@ljhbelconnen.com.au



LJ Hooker Belconnen
(02) 6251 1477

Disclaimer: All information contained therein is gathered from relevant third parties sources. We cannot guarantee or give any warranty about the information provided. Interested parties must rely solely on their own enquiries.



189 Namatjira Drive, Fisher



Disclaimer: Plans are indicative only and should be checked by the prospective purchaser. Plans shown are for presentation purposes and are not part of any legal document. All measurements and figures are approximate. The information herein is gathered from sources we believe to be reliable.