

Firle, 3/30 Shelley Street

Sold by Luke Mitchell of LJ Hooker Adelaide Metro



Sold Pre-Market with a number of other buyers looking to buy into this area!

A perfect opportunity for first home buyers, downsizing homeowners & savvy investors looking to further grow their portfolio in this highly sought after location.

This 2 bedroom unit in a quiet block of 6 offers low maintenance living in the desirable Eastern suburbs. With recent updates such as flooring, carpet in bedrooms, and paint. This is ready to move in or rent out.

The floorplan offers great flexibility with the ability to separate the kitchen/dining to the living area as well as the bedrooms. The kitchen offers plenty of storage and leads out to your rear yard for some peace and serenity. Your carport is also directly across from your unit making easy access to and from your car.

For Sale
Contact Agent

View
ljhooker.com.au/2CHSFDZ

Contact
Luke Mitchell
0411 703 055
luke.mitchell@ljhadelaidemetro.com.au



LJ Hooker St Peters
(08) 8362 8008

Disclaimer: All information contained therein is gathered from relevant third parties sources. We cannot guarantee or give any warranty about the information provided. Interested parties must rely solely on their own enquiries.

Experience the convenience of this prime location, situated within a leisurely walking distance from beloved local shops, cafes, and eateries. Not to mention, a stone's throw away from the Adey reserve for those lazy Sunday picnics.

With excellent access to public transportation, exploring metropolitan Adelaide has never been easier.

Features include:

- Spacious 2 bedroom unit in convenient location
- Updated flooring throughout
- Open plan kitchen/dining with adjacent living area
- Well equipped kitchen
- Small block of 6 single floor units
- A/C unit in living area

Contact Luke Mitchell today for more information.

** All information provided has been obtained from sources we believe to be accurate, however, we cannot guarantee the information is accurate and we accept no liability for any errors or omissions (including but not limited to a property's land size, floor plans and size, building age and condition). Interested parties should make their own enquiries and obtain their own legal advice.

RLA 61345 RLA 282965 RLA 231015

More About this Property

Property ID	2CHSFDZ
Property Type	Unit

Luke Mitchell 0411 703 055

Sales Consultant | luke.mitchell@ljhadelaidemetro.com.au

LJ Hooker St Peters (08) 8362 8008

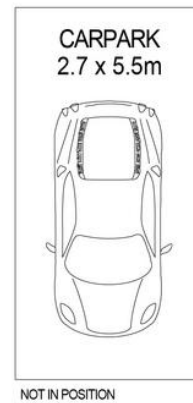
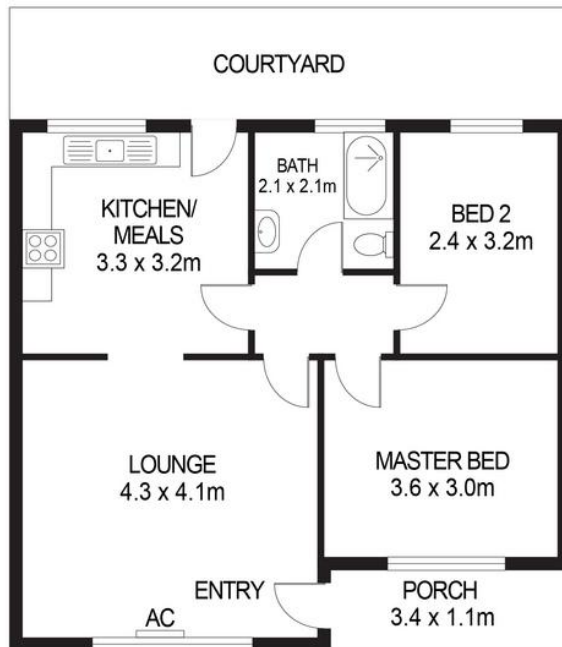
2a Portrush Road, PAYNEHAM SA 5070

stpeters.ljhooker.com.au | stpeters@ljhadelaidemetro.com.au



LJ Hooker St Peters
(08) 8362 8008

Disclaimer: All information contained therein is gathered from relevant third parties sources. We cannot guarantee or give any warranty about the information provided. Interested parties must rely solely on their own enquiries.



3.30 SHELLEY STREET, FIRLE

APPROXIMATE DIMENSIONS	
LIVING:	65.4m ²
CARPARK/PORCH:	18.6m ²
COURTYARD:	15.6m ²
TOTAL:	99.6m ²

DISCLAIMER

PLANS SHOWN ARE FOR MARKETING PURPOSES ONLY. ALL DIMENSIONS ARE APPROXIMATE AND NOT TO SCALE. THEY ARE SUBJECT TO ERRORS AND INACCURACIES AND NO LIABILITY WILL BE ACCEPTED. INTERESTED PARTIES SHOULD MAKE THEIR OWN ENQUIRIES.

