

## Fingal Head, 36 Fingal Road

Sold by Amy & Erin

Fantastic opportunity to build your dream waterfront home on this generous 1012sqm level block in the exclusive Fingal Head in Northern NSW. The property offers uninterrupted water views across the Tweed River and moments to the Fingal Head surf beaches at the end of the street.

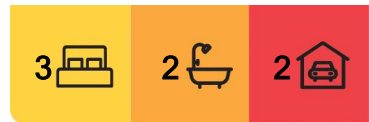
Fingal being a mecca for the water sport enthusiast, launch the tinny or the jet ski anytime with boat ramp just down the road, this is what the coastal lifestyle is all about.

Immerse yourself in nature with a leisurely stroll through the dunal greenspace from your back yard and in only moments, find yourself on the stunning white sands of Dreamtime Beach, with the majestic Fingal Lighthouse as the backdrop, this location truly is what dreams are made of!

The existing original circa 1960's home is ripe for renovation or, knock down and start



**Disclaimer:** All information contained therein is gathered from relevant third parties sources. We cannot guarantee or give any warranty about the information provided. Interested parties must rely solely on their own enquiries.



**For Sale**  
Sold Prior to Auction - Inspection Cancelled

**View**  
[ljhooker.com.au/16W8F69](http://ljhooker.com.au/16W8F69)

**Contact**  
**Erin Nielsen**  
0414 259 605  
erinnielsen@ljhkingscliff.com.au  
**Amy Sanderson**  
0403 851 003  
amysanderson@ljhkingscliff.com.au

**LJ Hooker Kingscliff**  
**(02) 6674 1000**

again creating your ultimate beachside home in this coveted location.

**Property Features:**

- 1012sqm level block
- Stunning riverfront position with Wommin Lake to the rear
- Direct access to Dreamtime Beach via walking track

**Where To From Here**

- 10mins to Gold Coast International Airport
- 5 mins to Kingscliff town centre, beach & creek
- 6 mins to new Tweed Valley Hospital (opening May 2024)
- 5 mins to local schools
- 200m to public transport

Fingal Head is a tightly held, exclusive market, do not miss your opportunity to secure this rare 1/4 acre site surrounded by the ocean and river.

The Tweed Coast is one of the county's hottest markets at the moment, only to be underpinned by the new \$723m Tweed Valley Hospital opening in May 2024, only 6 minutes down the road, NOW is the time to secure your piece of this thriving market.

Call Erin on 0414 259 605 or Paul 0413 056 400 for further information or to arrange your private viewing.

Disclaimer: All information (including but not limited to the property area, floor size, price, photos, address and general property description) is provided as a convenience to you and has been provided to LJ Hooker by third parties. LJ Hooker is unable to definitively confirm whether the information listed is correct or 100% accurate. LJ Hooker does not accept any liability (direct or indirect) for any injury, loss, claim, damage or any incidental or consequential damages, including but not limited to lost profits or savings, arising out of or in any way connected with the use of any information, or any error, omission or defect in the information, contained on the Website. Information contained on the Website should not be relied upon and you should make your own enquiries and seek legal advice in respect of any property on the Website. Prices displayed on the Website are current at the time of issue, but may change.

## More About this Property

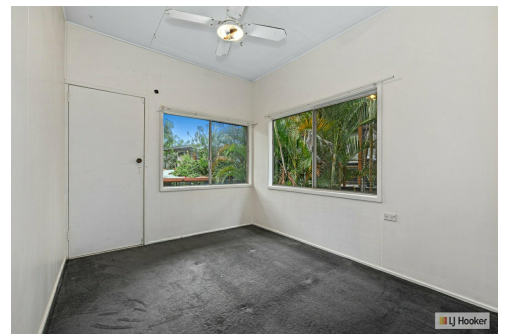
<b>Property ID</b>	16W8F69
<b>Property Type</b>	House

**Erin Nielsen 0414 259 605**  
Sales Specialist | [erinnielsen@ljkingscliff.com.au](mailto:erinnielsen@ljkingscliff.com.au)  
**Amy Sanderson 0403 851 003**  
Sales Specialist | [amysanderson@ljkingscliff.com.au](mailto:amysanderson@ljkingscliff.com.au)

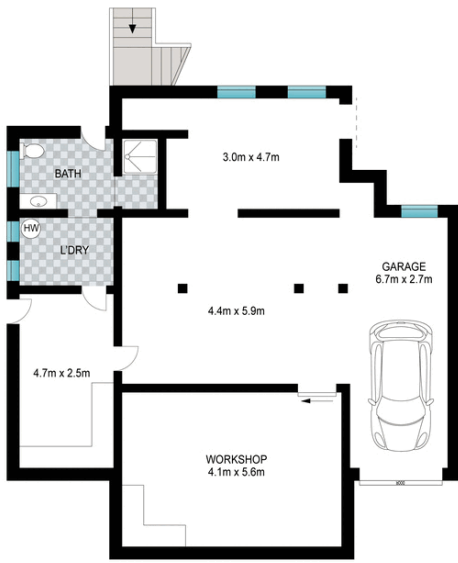
**LJ Hooker Kingscliff (02) 6674 1000**  
Shop 4, 106 Marine Parade, KINGSCLIFF NSW 2487  
[kingscliff.ljhooker.com.au](http://kingscliff.ljhooker.com.au) | [office@ljkingscliff.com.au](mailto:office@ljkingscliff.com.au)



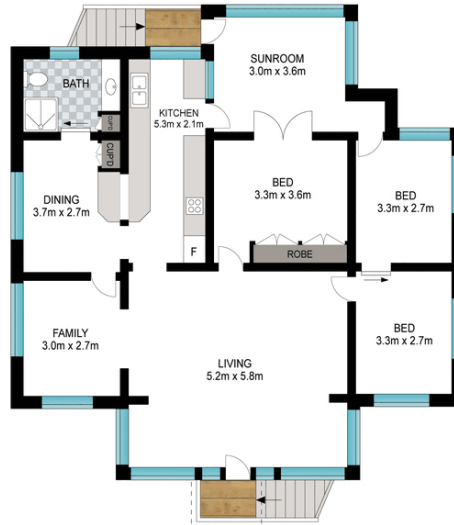
**Disclaimer:** All information contained therein is gathered from relevant third parties sources. We cannot guarantee or give any warranty about the information provided. Interested parties must rely solely on their own enquiries.



**LJ Hooker Kingscliff**  
**(02) 6674 1000**



GROUND LEVEL



UPPER LEVEL



Scale in metres. Indicative only. Dimensions are approximate. All information contained herein is gathered from sources we believe to be reliable. However, we cannot guarantee its accuracy and interested persons should rely on their own enquiries.

INT: 286 m<sup>2</sup>  
 EXT: 90 m<sup>2</sup>  
 TOTAL: 376 m<sup>2</sup>



36 Fingal Road, Fingal



LJ Hooker Kingscliff  
 (02) 6674 1000

**Disclaimer:** All information contained therein is gathered from relevant third parties sources. We cannot guarantee or give any warranty about the information provided. Interested parties must rely solely on their own enquiries.