



Ferny Grove, 16 Hatia Grove

WELL PRESENTED LOWSET HOME IN PRIME POSITION

Freshly Painted Inside, New Carpet, Roof and Gutters Painted.

This Lowset Family Home is situated in a quiet position and has been built on 702sqm of land. You are within walking distance of local parks.

A short drive will take you to Ferny Grove Railway Station, Local Shopping Centre, Ferny Grove High School, Ferny Grove Primary School and Keperra Shopping Village. 17.3km to the CBD, 12.5km to Prince Charles Public Hospital and St Vincents Private Hospital.

Enjoy a game of Golf at Keperra Golf Course.

There are 3 Built-In Bedrooms, Study, 2 Bathrooms, Open Plan Kitchen, Meals Area,



Disclaimer: All information contained therein is gathered from relevant third parties sources. We cannot guarantee or give any warranty about the information provided. Interested parties must rely solely on their own enquiries.

3

2

2

For Sale
Please Call

View
ljhooker.com.au/38DZF1R

Contact
David Winters
0418 731 099
d winters@ljhooker.com.au

LJ Hooker Aspley | Chermide
(07) 3263 6022

Family Room, Lounge Room, spacious covered Outdoor Entertainment Area and Double Garage.

Features;

- * 3 Bedrooms —Main with walk-in Robe
- * Study
- * 2 Bathrooms
- * Family Room
- * Meals Area
- * Lounge Room
- * Laundry
- * DLUG
- * Fully Fenced
- * 702sqm
- * Air-Conditioners in Main Bedroom and Living
- * Freshly Painted Inside
- * Roof and Gutters freshly painted
- * New Carpet
- * New Shower in main bath
- * Vacant

Phone David now, 0418 731 099, to arrange your Inspection.

More About this Property

Property ID	38DZF1R
Property Type	House
Land Area	702 m ²
Including	Study Air Conditioning

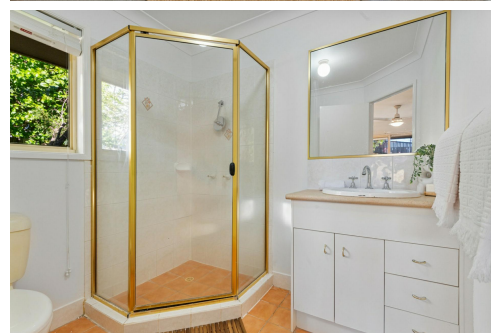
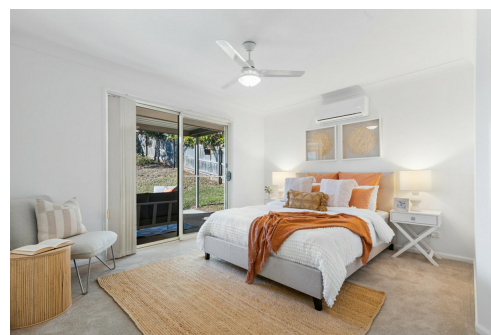
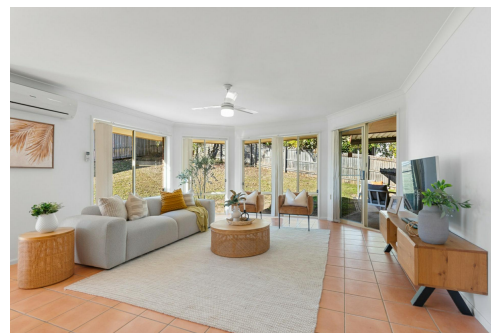
David Winters 0418 731 099

Sales Consultant | dwinters@ljhooker.com.au

LJ Hooker Aspley | Chermside (07) 3263 6022

1359 Gympie Road, ASPLEY QLD 4034

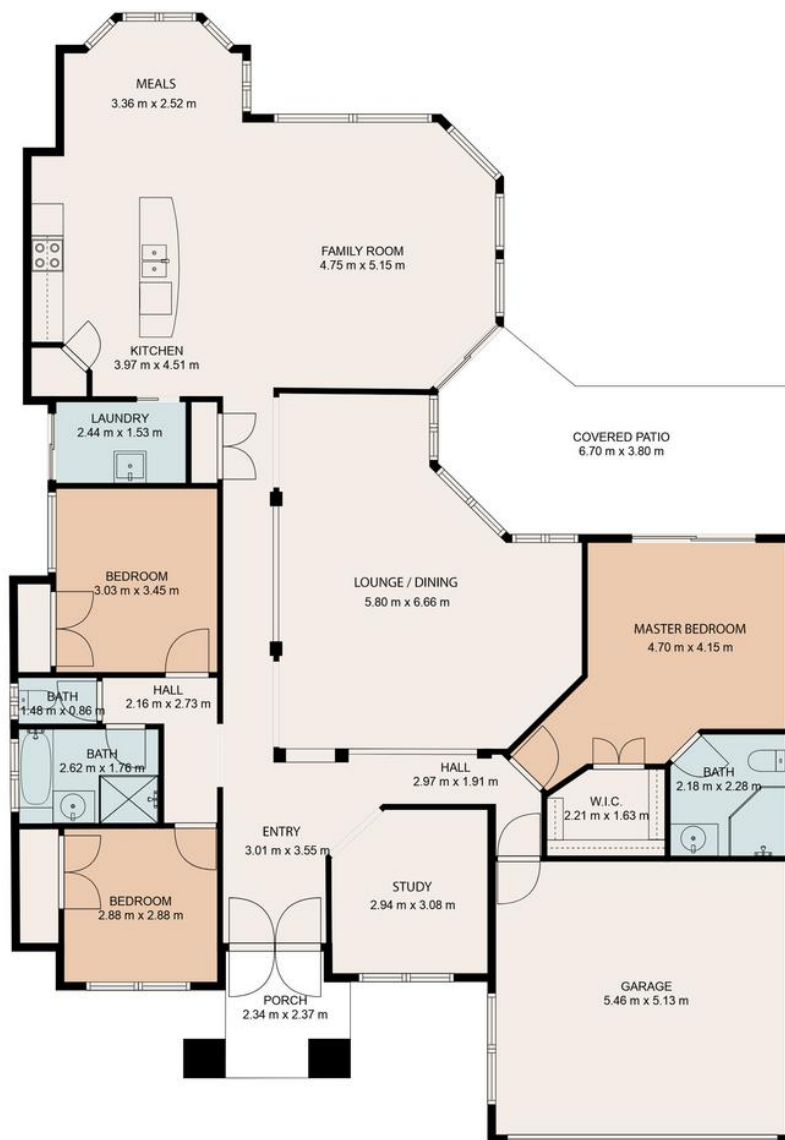
aspley@ljhooker.com.au | aspley@ljhooker.com.au



Disclaimer: All information contained therein is gathered from relevant third parties sources.

We cannot guarantee or give any warranty about the information provided. Interested parties must rely solely on their own enquiries.

**LJ Hooker Aspley | Chermside
(07) 3263 6022**



Total Area : 224m2 approx

Whilst every attempt has been made to ensure accuracy,
Floor Plans are representative and should be used as a guide only

LJ Hooker