



## Fassifern, 1 Awaba Street

### CHARMING CREEKFRONT COTTAGE - MUST BE SOLD

Welcome to 1 Awaba Street, Fassifern. This charming creekfront home is an incredible example of lakeside living with concrete slipway and substantial boating access to Lake Macquarie. A three bedroom cottage with a large, covered outdoor deck overlooking the mature fruit trees and down to the creek. The home boasts a large double carport with drive through access to a double lock up garage with potential to create an extra drive through access to the slipway. All three bedrooms include large built in wardrobes. Enjoy afternoons by the creek in this stunning quiet escape. Owners are committed elsewhere, this is an opportunity not to be missed.

#### Features Include:

- Three bedroom home with built in robes
- Large entertaining deck overlooking the creek and backyard
- Concrete slipway with electric winch stored in garage
- Level 781sqm block



**Disclaimer:** All information contained therein is gathered from relevant third parties sources. We cannot guarantee or give any warranty about the information provided. Interested parties must rely solely on their own enquiries.

**SOLD**

3

1

4

**For Sale**  
CONTACT AGENT

**View**  
[ljhooker.com.au/Z4RF7Q](http://ljhooker.com.au/Z4RF7Q)

**Contact**  
**Callan O'Reilly**  
0412 168 303  
[callan.oreilly@ljhooker.com.au](mailto:callan.oreilly@ljhooker.com.au)

**LJ Hooker Lake Macquarie**  
**(02) 4915 3800**



- Reverse cycle airconditioning in main living room
- Formal dining off kitchen
- Large double carport with drive through access to double lock up garage
- 5km to Toronto CBD, cafes and restaurants
- Close to multiple Schooling options
- 1.2km to Fassifern Station

Agent declares interest.

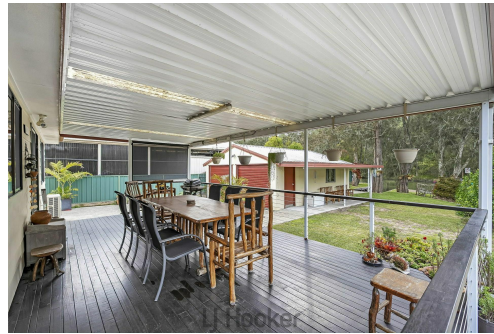
The information contained herein has been provided by people we believe to be reliable, however all interested parties must rely on their own enquiries.

## More About this Property

Property ID	Z4RF7Q
Property Type	House
Land Area	781 m²
Including	Air Conditioning Dishwasher Built-in-Robes Boatshed/slipway Close to Schools Close to Shops Close to Transport Fenced Backyard Storage

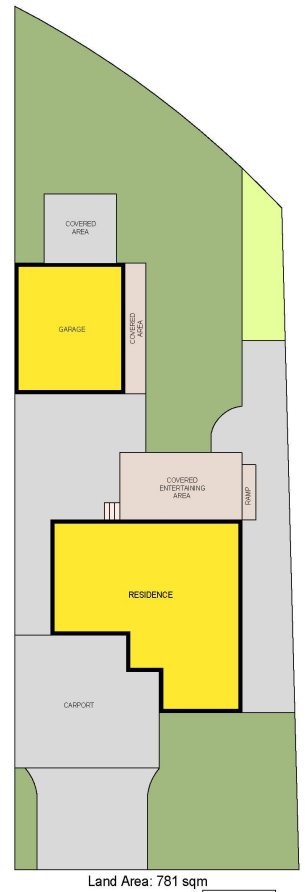
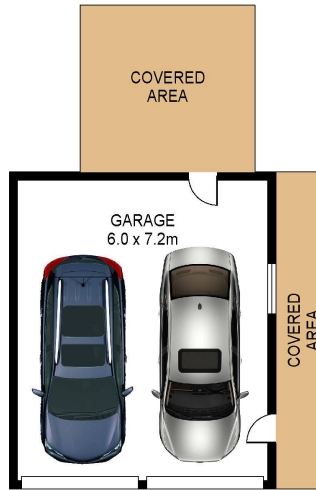
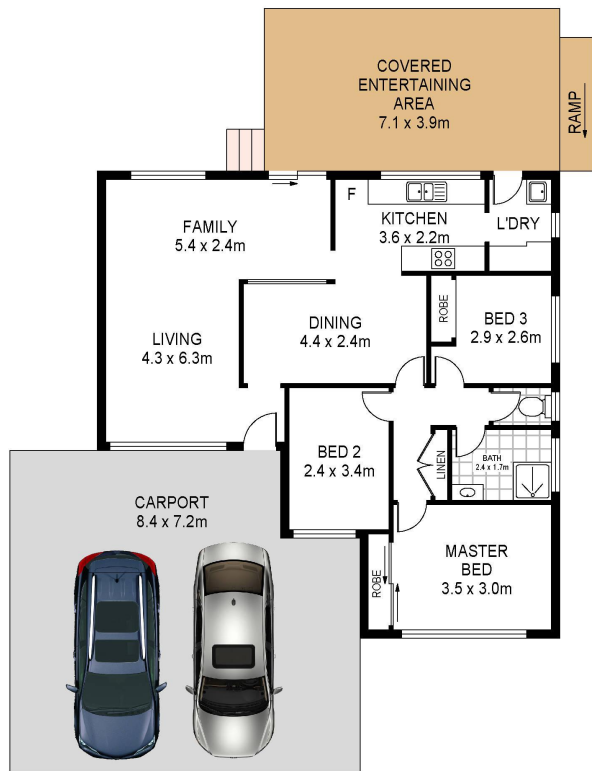
**Callan O'Reilly 0412 168 303**  
Sales Executive | [callan.oreilly@ljhooker.com.au](mailto:callan.oreilly@ljhooker.com.au)

**LJ Hooker Lake Macquarie (02) 4915 3800**  
Shop 12, 240-260 Hillsborough Road, WARNERS BAY NSW 2282  
[lakemacquarie.ljhooker.com.au](mailto:lakemacquarie.ljhooker.com.au) | [warnersbay@ljhooker.com.au](mailto:warnersbay@ljhooker.com.au)



**Disclaimer:** All information contained therein is gathered from relevant third parties sources. We cannot guarantee or give any warranty about the information provided. Interested parties must rely solely on their own enquiries.

**LJ Hooker Lake Macquarie**  
**(02) 4915 3800**



1 Awaba Street  
Fassifern

0 1 2 3 4 5  
Total Internal Floor Area: 91 sqm

Scale in metres. Indicative only. Dimensions are approximate. All information contained herein is gathered from sources we believe to be reliable. However we cannot guarantee its accuracy and interested persons should rely on their own enquiries



LJ Hooker Lake Macquarie  
(02) 4915 3800

**Disclaimer:** All information contained therein is gathered from relevant third parties sources.  
We cannot guarantee or give any warranty about the information provided. Interested parties must rely solely on their own enquiries.