

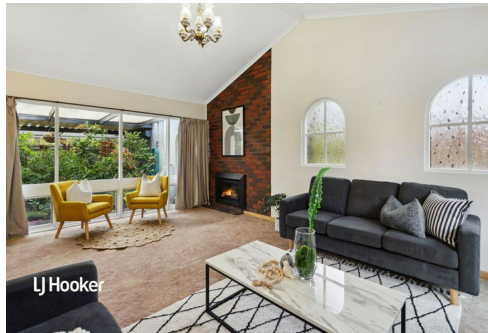


LJ Hooker

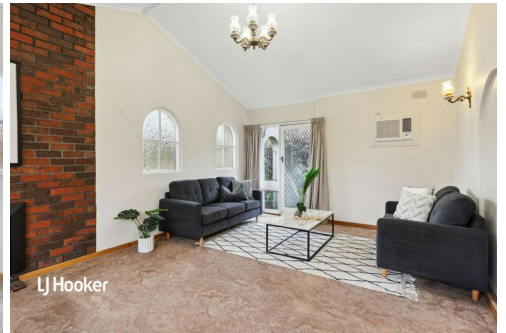
**SOLD**



LJ Hooker



LJ Hooker



LJ Hooker

## Fairview Park, 20 Palmer Street

### Family Entertainer

Built in 1972 this well-maintained family home offers a great lifestyle in the ever popular suburb of Fairview Park.

Lovingly presented both inside and out, this home with its flexible floor plan, offers a choice of living areas, with up to four bedrooms, multiple outside entertaining areas, a stunning pool, plus extensive garaging and workshops that makes it perfect for all the toys and the whole family to enjoy!

Set on a generous allotment of approximately 840sqm this property ticks all the boxes.

Features you will love:

\* Three generous sized bedrooms all with built-in wardrobes



**Disclaimer:** All information contained therein is gathered from relevant third parties sources. We cannot guarantee or give any warranty about the information provided. Interested parties must rely solely on their own enquiries.



#### For Sale

\$675,000 - \$705,000

#### View

[ljhooker.com.au/29PDGJU](http://ljhooker.com.au/29PDGJU)

#### Contact

##### Bruno Caporella

0439 679 020

[brunoc@ljhsales.com.au](mailto:brunoc@ljhsales.com.au)

##### Tyson Bell

0455600065

[tysonb@ljhsales.com.au](mailto:tysonb@ljhsales.com.au)

**LJ Hooker Greenwith | Golden Grove | Mawson Lakes | Modbury (08) 8289 6660**

- \* Fourth bedroom/ Studio with ceiling fan
- \* Formal lounge with gas heating, wall air conditioner and direct access to garden courtyard
- \* Well-appointed kitchen, with quality stainless appliances, gas cooking and lots of storage
- \* Second living area with wall air conditioner and direct access to garden courtyard
- \* Ducted cooling
- \* Large fully tiled in ground pool with salt chlorination
- \* Large powered workshops/garaging and carports with secure parking for up to six vehicles
- \* Multiple water tanks to look after the gardens
- \* Solar panels to reduce power bills

This property is all about the life-style, don't hesitate enquire today!

All information provided has been obtained from sources we believe to be accurate, however, we cannot guarantee the information is accurate and we accept no liability for any errors or omissions (including but not limited to a property's land size, floor plans and size, building age and condition). Interested parties should make their own enquiries and obtain their own legal and financial advice. Should this property be scheduled for auction, the Vendor's Statement may be inspected at either of our two LJ Hooker Property Specialists Real Estate offices for 3 consecutive business days immediately preceding the auction and at the auction for 30 minutes before it starts.

RLA 208516



**Disclaimer:** All information contained therein is gathered from relevant third parties sources. We cannot guarantee or give any warranty about the information provided. Interested parties must rely solely on their own enquiries.

**LJ Hooker Greenwith | Golden  
Grove | Mawson Lakes | Modbury  
(08) 8289 6660**

## More About this Property

<b>Property ID</b>	29PDGJU
<b>Property Type</b>	House
<b>House Size</b>	136 m <sup>2</sup>
<b>Land Area</b>	840 m <sup>2</sup>
<b>Including</b>	Study Air Conditioning Pool Outdoor Entertaining Workshop Built-in-Robes Secure Parking Solar Panels Remote Garage

### Bruno Caporella

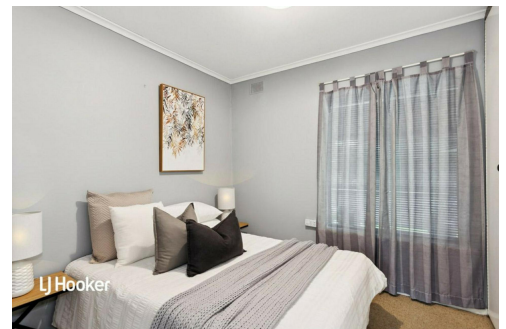
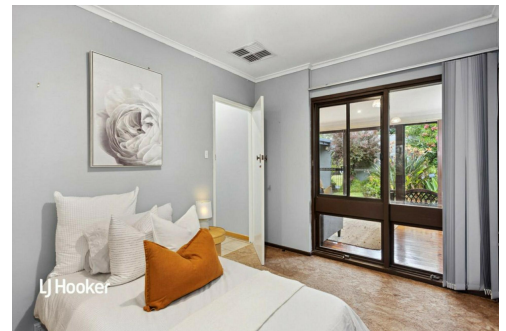
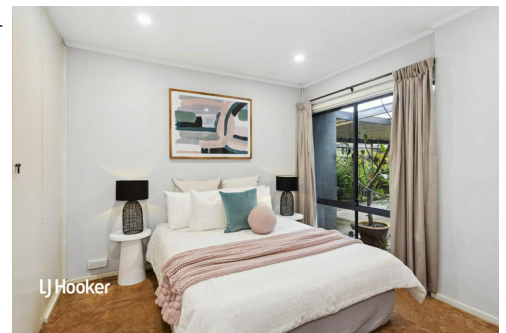
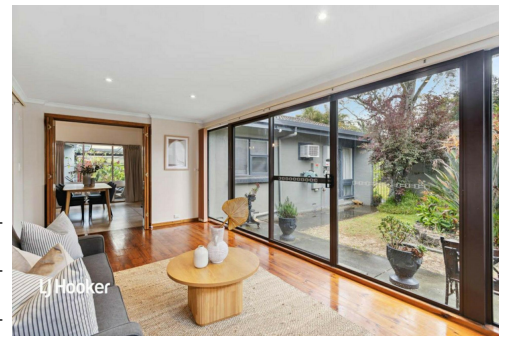
Sales Specialist | Property Inspector | [brunoc@ljhsales.com.au](mailto:brunoc@ljhsales.com.au)

### Tyson Bell

Sales Specialist | [tysonb@ljhsales.com.au](mailto:tysonb@ljhsales.com.au)

**LJ Hooker Greenwith | Golden Grove | Mawson Lakes | Modbury (08)  
8289 6660**

North East, Shop 2, 1007 North East Road, RIDGEHAVEN SA 5097  
[greenwithgoldengrove.ljhooker.com.au](http://greenwithgoldengrove.ljhooker.com.au) | [info@ljhsupport.com.au](mailto:info@ljhsupport.com.au)



**Disclaimer:** All information contained therein is gathered from relevant third parties sources. We cannot guarantee or give any warranty about the information provided. Interested parties must rely solely on their own enquiries.

**LJ Hooker Greenwith | Golden  
Grove | Mawson Lakes | Modbury  
(08) 8289 6660**



Scale in metres. This drawing is for illustration purposes only. All measurements are approximate and details intended to be relied upon should be independently verified.

Produced by The Fotobase Group



**LJ Hooker Greenwith | Golden Grove | Mawson Lakes | Modbury**  
**(08) 8289 6660**

**Disclaimer:** All information contained therein is gathered from relevant third parties sources. We cannot guarantee or give any warranty about the information provided. Interested parties must rely solely on their own enquiries.