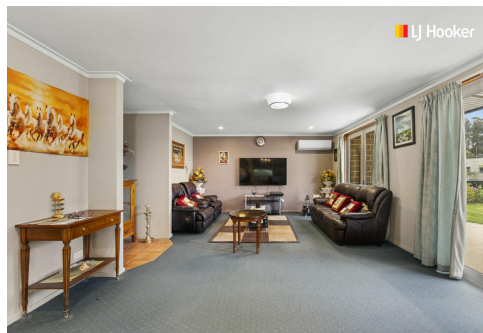


SOLD



Fairfield, 43 Main Road

Spacious Brick Home with Exceptional Parking

Auction Location: LJ Hooker Dunedin, 63 Musselburgh Rise

Positioned on a level, easy-care 731m² section in sought-after Fairfield, this permanent materials home offers comfort, convenience and exciting potential for a fortunate new family! Built in 2003, there is room to cosmetically enhance but all the benefits of a modern property are included, such as two bathrooms, the open living/dining/kitchen arrangement and the thorough level of insulation.

Spread across two levels with an approximate floor area of 200m², the home provides 3 bedrooms and an office (or 4th single bedroom), with easy access from the lounge out onto the front lawn - great for kids - and situated at the rear of the property you have a huge amount of off-street parking, which consists of a double garage and three carports.

Situated close to local amenities and zoned for the ever-popular Fairfield School, this is

3 

2 

5 

For Sale
Auction

View
ljhooke.co.nz/3PSRGDS

Contact
Jason Hynes
021 225 5527
Jason@ljhdunedin.co.nz
Lawrence Schaumann
027 418 6204
lawrence@ljhdunedin.co.nz

smart buying and our transferring owners are genuinely for sale on or before 14th May!

More About this Property

Property ID	3PSRGDS
Property Type	House
House Size	200 m2
Land Area	731 m2
Licensed Real Estate Agents (REAA2008)	

Jason Hynes 021 225 5527

Managing Director / Licensee / Auctioneer | Jason@ljhdunedin.co.nz

Lawrence Schaumann 027 418 6204

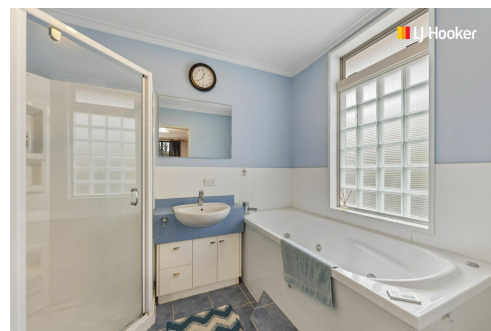
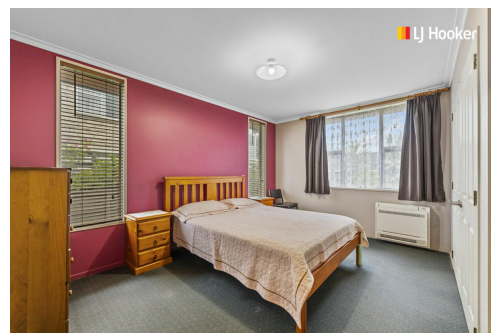
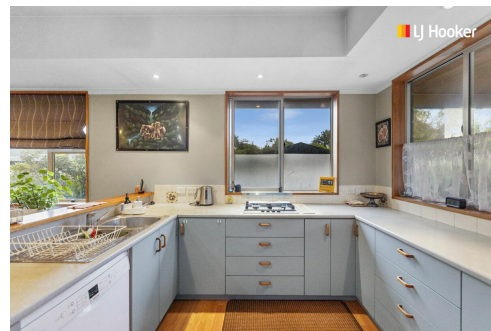
Licensee | lawrence@ljhdunedin.co.nz

LJ Hooker Dunedin (03) 470 1370

Wayne Graham Realty Ltd

63 Musselburgh Rise, DUNEDIN 9013

dunedin.ljhooker.co.nz | dunedin@ljhdunedin.co.nz



Disclaimer: All information contained therein is gathered from relevant third parties sources.

We cannot guarantee or give any warranty about the information provided. Interested parties must rely solely on their own enquiries.

LJ Hooker Dunedin

(03) 470 1370

Wayne Graham Realty Ltd