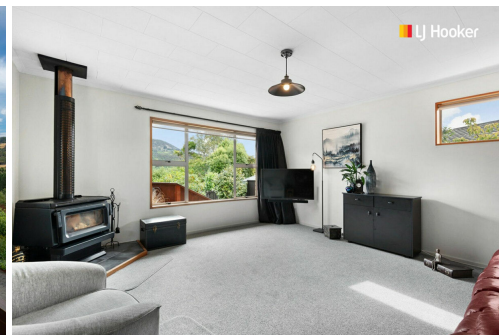
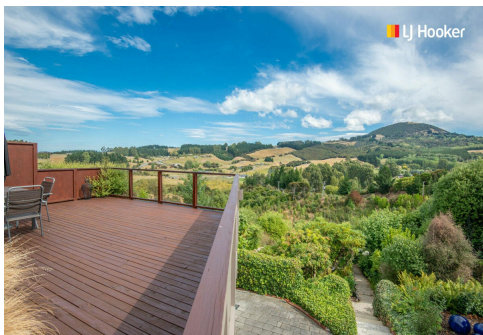


SOLD



Fairfield, 30 Edith Street

Instantly Appealing, You Won't Find Better!

Auction Location: LJ Hooker Dunedin Office, 63 Musselburgh Rise

Welcome to your dream family home in Fairfield, where rural charm meets modern comfort. This pristine residence offers a picturesque rural outlook towards Saddle Hill, providing a serene backdrop to your everyday life. The exquisite 807sqm section is supremely positioned in Walton Park with all-day sunshine and the most relaxing of settings. Inside offers a refurbished environment with the upgraded kitchen and bathroom, plus a large wood burner that warms the spacious lounge and dining areas. Dual outdoor entertaining options offer versatility and flexibility for gatherings, with the basement garaging/workshop space and double carport providing no shortage of off-street storage. Inspection is a must as this home may sell at any point, you won't find better!

3 

1 

3 

For Sale
Auction

View
ljhooker.co.nz/3N0ZGDS

Contact
Jason Hynes
021 225 5527
Jason@ljhdunedin.co.nz
Lawrence Schaumann
027 418 6204
lawrence@ljhdunedin.co.nz

More About this Property

Property ID	3N0ZGDS
Property Type	House
Land Area	807 m ²
Licensed Real Estate Agents (REAA2008)	

Jason Hynes 021 225 5527

Managing Director / Licensee / Auctioneer | Jason@ljhdunedin.co.nz

Lawrence Schaumann 027 418 6204

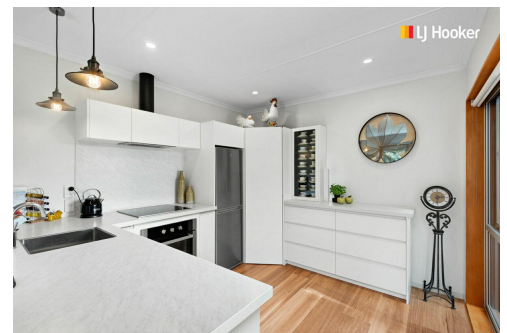
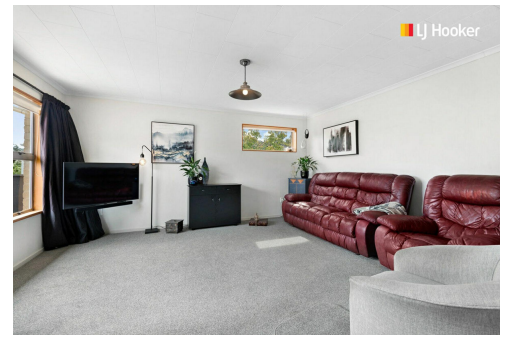
Licensee | lawrence@ljhdunedin.co.nz

LJ Hooker Dunedin (03) 470 1370

Wayne Graham Realty Ltd

63 Musselburgh Rise, DUNEDIN 9013

dunedin.ljhooker.co.nz | dunedin@ljhdunedin.co.nz



Disclaimer: All information contained therein is gathered from relevant third parties sources. We cannot guarantee or give any warranty about the information provided. Interested parties must rely solely on their own enquiries.

LJ Hooker Dunedin
(03) 470 1370
Wayne Graham Realty Ltd