

Fairfield, 136 Morris Road

The Perfect Lifestyle Block You've Been Waiting For!

Looking for a property that adapts to your lifestyle? Escape the ordinary and discover a property that offers more space, more comfort, and plenty of ways to make it your own. Set on 1.1 hectares (-+), this sun-filled home features an open-plan layout designed for effortless living. The living spaces flow seamlessly to a spacious & sunny deck, where you can relax, entertain, and soak up the natural beauty & views around you. With three large bedrooms plus a separate sleep-out, there's flexibility for family, guests & work from home option. Stay warm and cozy with a wood fire and heat pump, and enjoy the convenience of a double garage, separate laundry, and extensive under-house storage.

Whether you're after a peaceful retreat or a place to grow, this property is ready to match your lifestyle. Discover the tranquility, space, and freedom to live life your way.

3

1

2

For Sale

Enquiries Over \$779,000

View

ljhooker.co.nz/3P1TGDS

Contact

Luke MacDonald

027 8650 864

luke@ljhdunedin.co.nz



Disclaimer: All information contained therein is gathered from relevant third parties sources. We cannot guarantee or give any warranty about the information provided. Interested parties must rely solely on their own enquiries.

LJ Hooker Dunedin

(03) 470 1370

Wayne Graham Realty Ltd

More About this Property

Property ID	3P1TGDS
Property Type	House
Land Area	1.11 hectare
Licensed Real Estate Agents (REAA2008)	

Luke MacDonald 027 8650 864

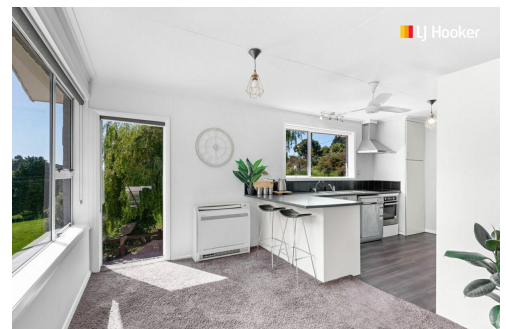
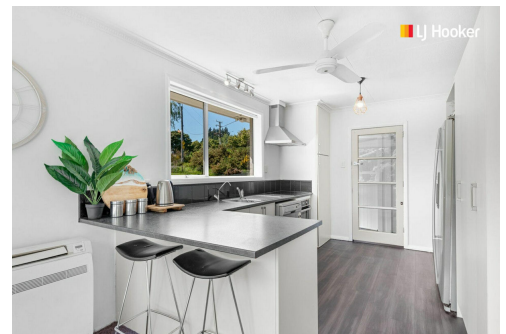
Licensee | luke@ljhdunedin.co.nz

LJ Hooker Dunedin (03) 470 1370

Wayne Graham Realty Ltd

63 Musselburgh Rise, DUNEDIN 9013

dunedin.ljhooker.co.nz | dunedin@ljhdunedin.co.nz



Disclaimer: All information contained therein is gathered from relevant third parties sources.
We cannot guarantee or give any warranty about the information provided. Interested parties must rely solely on their own enquiries.

LJ Hooker Dunedin
(03) 470 1370
Wayne Graham Realty Ltd