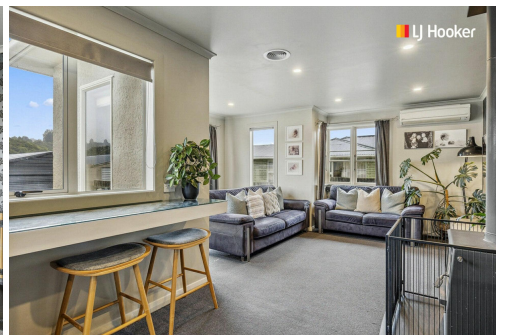
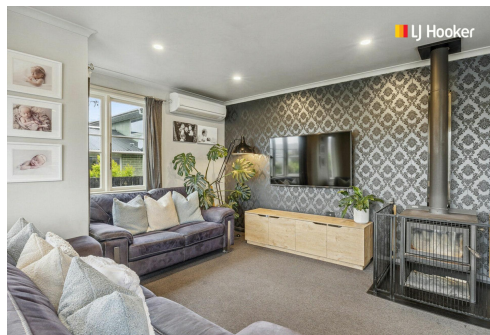




SOLD



Fairfield, 110 Main Road

The Ultimate Family Friendly Package

An absolute delight to bring to the market, this well-cared for and lovingly maintained home right across the road from Fairfield School and a short walk to the local park, will have instant appeal to first home buyers and young families.

Step inside and discover everything you've been searching for...three bedrooms, a modern open-plan kitchen and living area, and seamless indoor-outdoor flow to a sun-soaked deck--ideal for hosting summer gatherings with family and friends. Outside, the large, flat, and fully fenced section provides a secure haven where kids and pets can roam and play freely, giving you peace of mind.

The property includes a new double garage, with the finishing touches still needed for DCC sign off, and an attached sleepout complete with a bathroom awaiting completion. This versatile space offers the opportunity to create a fantastic work-from-home setup or a private retreat for teenagers -- the choice is yours!

My owners plans are set in motion and require a quick sale so don't delay, enquire today.

3 

1 

2 

For Sale

Enquiries Over \$639,000

View

ljhooker.co.nz/3P2FGDS

Contact

Trista Townsend

021 484 221

Trista@ljhdunedin.co.nz

More About this Property

Property ID	3P2FGDS
Property Type	House
Land Area	809 m2
Licensed Real Estate Agents (REAA2008)	

Trista Townsend 021 484 221

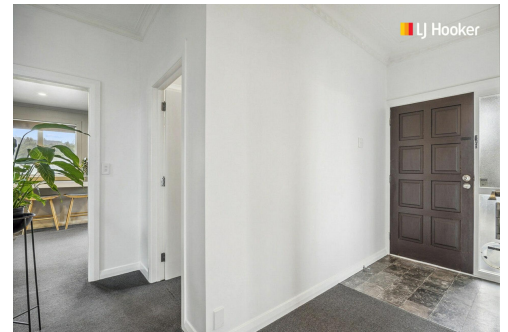
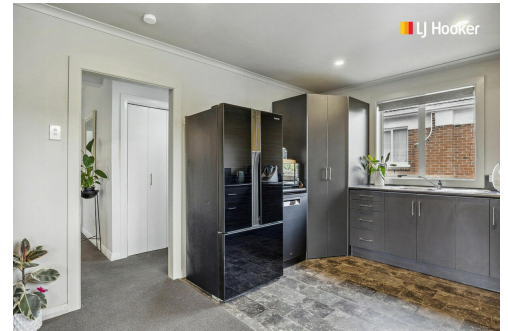
Licensee | Trista@ljhdunedin.co.nz

LJ Hooker Dunedin (03) 470 1370

Wayne Graham Realty Ltd

63 Musselburgh Rise, DUNEDIN 9013

dunedin.ljhooker.co.nz | dunedin@ljhdunedin.co.nz



Disclaimer: All information contained therein is gathered from relevant third parties sources.

We cannot guarantee or give any warranty about the information provided. Interested parties must rely solely on their own enquiries.

LJ Hooker Dunedin

(03) 470 1370

Wayne Graham Realty Ltd