

## Everton Park, 1/15 Buller Street

### EXPANSIVE ENTRY LEVEL BUYING! MOVE IN READY!

Have you been waiting for the perfect entry level opportunity with plenty of space and a convenient location close by to everything that you could ask for? Look no further than this move in ready unit, boasting an open plan design and in immaculate condition, this property has to be at the top of your list!

- Huge open plan lounge and dining space
- Sizable kitchen with ample storage
- Covered balcony front balcony
- Built in robes and fans in both bedrooms
- Large Bathroom with dual access
- Dedicated laundry upstairs
- Individual lock up garage
- Secure complex with intercom and well maintained gardens
- Built 1993 with 8 units in the complex



**For Sale**  
OPEN TO OFFERS

**View**  
By Appointment

**Contact**  
**Adam Stefan**  
0419 183 066  
adam.stefan@ljhooker.com.au

**Lucy West**  
0422 175 322  
lucy.west@ljhooker.com.au



**LJ Hooker Stafford**  
**(07) 3357 1888**

**Disclaimer:** All information contained therein is gathered from relevant third parties sources. We cannot guarantee or give any warranty about the information provided. Interested parties must rely solely on their own enquiries.

The convenience of an array of major and minor Shopping Centres only moments away, The recently renovated Everton Plaza just down the road with its numerous restaurants and cafes, Brookside Shopping Centre and Westfield Chermside close by.

The added benefit of excellent Schools both public & private, North West Private & Prince Charles Hospitals nearby and public transport on your doorstep, make the location here second to none.

A fantastic set and forget investment or ideal first home at only 7km to the City, don't delay contact Adam or Lucy for further details.

## More About this Property

**Property ID** 1DMTF4N

**Property Type** Unit

**Adam Stefan 0419 183 066**

Lead Salesperson | [adam.stefan@ljhooker.com.au](mailto:adam.stefan@ljhooker.com.au)

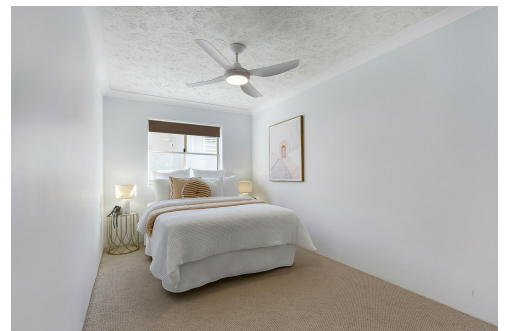
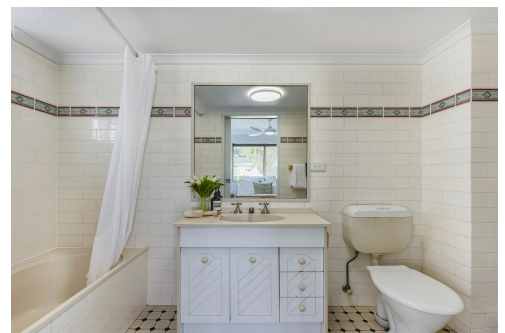
**Lucy West 0422 175 322**

Sales Associate | [lucy.west@ljhooker.com.au](mailto:lucy.west@ljhooker.com.au)

**LJ Hooker Stafford (07) 3357 1888**

205 Stafford Road, STAFFORD QLD 4053

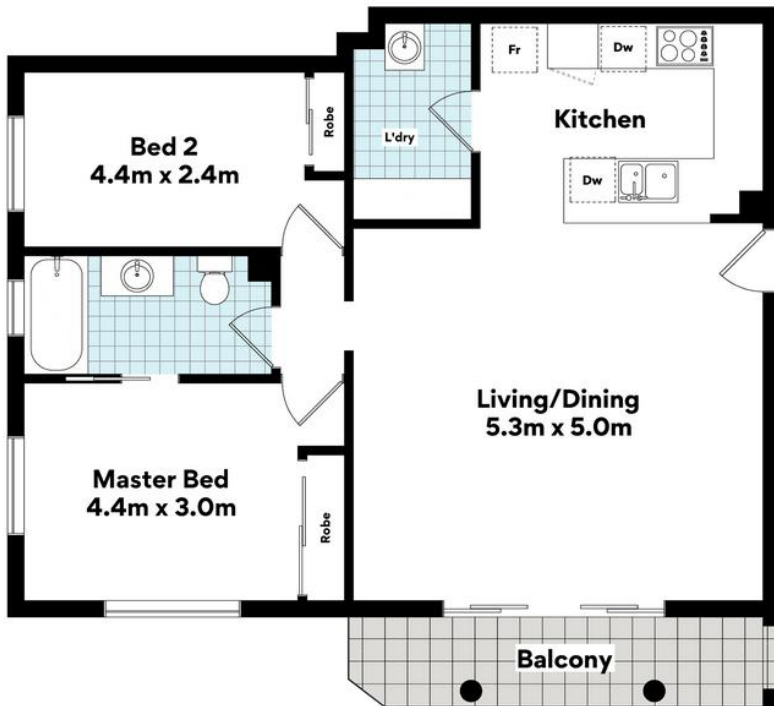
[stafford.ljhooker.com.au](mailto:stafford.ljhooker.com.au) | [stafford@ljhooker.com.au](mailto:stafford@ljhooker.com.au)



**Disclaimer:** All information contained therein is gathered from relevant third parties sources. We cannot guarantee or give any warranty about the information provided. Interested parties must rely solely on their own enquiries.

**LJ Hooker Stafford  
(07) 3357 1888**





**1/15 Buller St, Everton Park**

**FLOOR AREA SIZES**

Internal 80.7m<sup>2</sup> | External 6.8m<sup>2</sup> | Garage 22.6m<sup>2</sup> | **TOTAL 110.1m<sup>2</sup>**

Whilst every attempt has been made to ensure the accuracy of the floor plans contained here, measurements of doors, windows, rooms and any other items are approximate and no responsibility is taken for any error, omission or misstatement. These plans are for representation purposes only. Provided by primepixels.com.au