



## Everton Park, 8/28 Nitawill Street

Corner Allotment; Masterfully Presented!

Finished with flair, style, and boutique fixtures, this lovely townhouse leaves no stone unturned in its quest for a perfect appearance and lovely atmosphere. Walking in through the fenced courtyard, you are greeted by a warm palette through the flooring, as well as lovely light and air throughout. The large sliding door which encloses this space is finished with a gorgeous emerald curtain.

The renovated kitchen is the centrepiece of the home. Finished with a timber benchtop and beautiful dark green cabinetry, the large space here is perfect for entertaining. The laundry and ground floor powder room area lead to a rear common greenspace.

Upstairs, the large master bedroom has a covered patio and walk-in wardrobe complementing its air-conditioned comfort. The main bathroom is a lovely space for relaxation.



**For Sale**  
OPEN TO OFFERS

**View**  
[ljhooker.com.au/1BGGF4N](https://ljhooker.com.au/1BGGF4N)

**Contact**  
**Simon Brigden**  
0414 869 704  
[simon.brigden@ljhooker.com.au](mailto:simon.brigden@ljhooker.com.au)



**Disclaimer:** All information contained therein is gathered from relevant third parties sources. We cannot guarantee or give any warranty about the information provided. Interested parties must rely solely on their own enquiries.

**LJ Hooker Stafford**  
**(07) 3357 1888**

## Features:

- \* Stylish emerald curtain in main living; deep blue in main bedroom.
- \* The drive-through, double-doored garage is a flexible addition - rarely found.
- \* Air-conditioning in the main living and main bedroom.
- \* Warmly paletted flooring both upstairs and downstairs.
- \* Completely renovated kitchen with timber benchtops.
- \* Kitchen complete with stylish fixtures and coffee machine nook.
- \* Large internal laundry and powder room on the ground floor.
- \* Open stairway allows the main living and dining space to expand.
- \* Entry void and high window floods the home with natural light.
- \* Walk-in wardrobe in the main bedroom; built-in in second bedroom.
- \* Renovated bathroom.

Call Simon to ascertain the body corporate details and to see how to call this one home.

## More About this Property

Property ID	1BGGF4N
Property Type	Townhouse
Including	Air Conditioning Courtyard Built-in-Robes

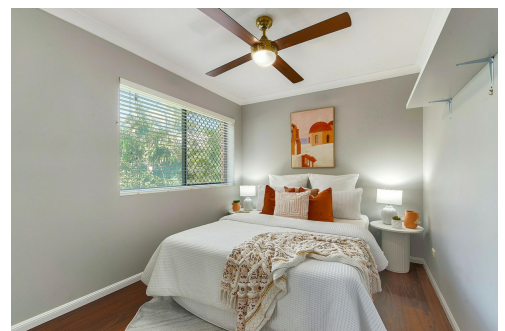
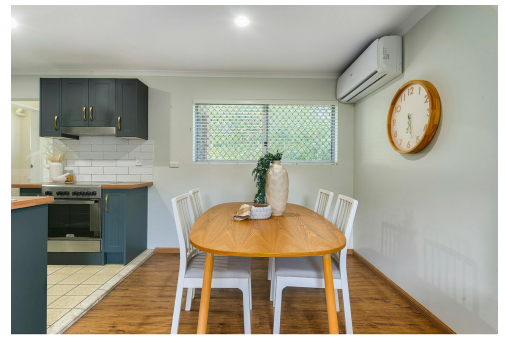
**Simon Brigden 0414 869 704**

Sales & Marketing Consultant | [simon.brigden@ljhooker.com.au](mailto:simon.brigden@ljhooker.com.au)

**LJ Hooker Stafford (07) 3357 1888**

205 Stafford Road, STAFFORD QLD 4053

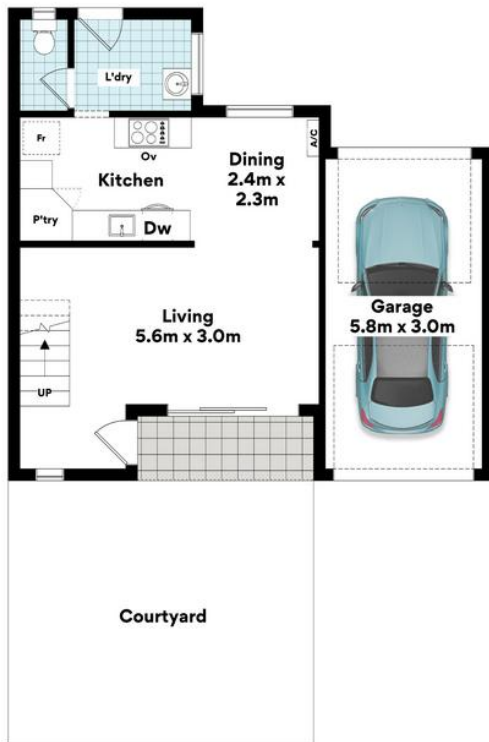
[stafford.ljhooker.com.au](http://stafford.ljhooker.com.au) | [stafford@ljhooker.com.au](mailto:stafford@ljhooker.com.au)



**Disclaimer:** All information contained therein is gathered from relevant third parties sources. We cannot guarantee or give any warranty about the information provided. Interested parties must rely solely on their own enquiries.

**LJ Hooker Stafford**  
**(07) 3357 1888**





GROUND FLOOR



FIRST FLOOR



**8/28 Nitawill St, Everton Park**

**FLOOR AREA SIZES**

Internal 89m<sup>2</sup> | External 8m<sup>2</sup> | Garage 20m<sup>2</sup> | **TOTAL 117m<sup>2</sup>**

Whilst every attempt has been made to ensure the accuracy of the floor plans contained here, measurements of doors, windows, rooms and any other items are approximate and no responsibility is taken for any error, omission or misstatement. These plans are for representation purposes only. Provided by primepixels.com.au