



Everton Park, 56 Sizer Street

ABSOLUTE ENTRY LEVEL HOME !

This entry level post-war timber home offers an incredible opportunity for first-home buyers, renovators, or savvy investors. Positioned in one of Everton Park's most sought-after pockets, this versatile home sits proudly on a low maintenance block with a solid brick base, ready for your personal touch.

Perfectly located just a short stroll to the popular Park Lane dining precinct, you'll enjoy the vibrant atmosphere of cafes, restaurants, and bars right at your doorstep.

Property Features:

- 3 spacious bedrooms (main with built-in)
- Functional kitchen and bathroom, plus a convenient second toilet
- Open plan lounge and dining rooms with airconditioning
- Beautiful hardwood timber floors



Disclaimer: All information contained therein is gathered from relevant third parties sources. We cannot guarantee or give any warranty about the information provided. Interested parties must rely solely on their own enquiries.

3

1

2

For Sale
Offers

View
ljhooker.com.au/1DJGF4N

Contact
Richard Mirosch
0414 512 776
richard.mirosch@ljhooker.com.au

LJ Hooker Stafford
(07) 3357 1888

- Enclosed sun room
- Large concreted under-house area with laundry —excellent storage or workspace potential
- Perfect low maintenance yard
- Currently rented at \$620 per week until 4th December 2025
- 2 car off street parking.

Walking distance to shopping centres, parks, public transport, and quality schools

Don't miss your chance to secure this well-positioned home with character, space, and lifestyle on its side. Whether you move straight in, renovate —the potential here is undeniable.

Be quick —homes in this location don't stay on the market for long!

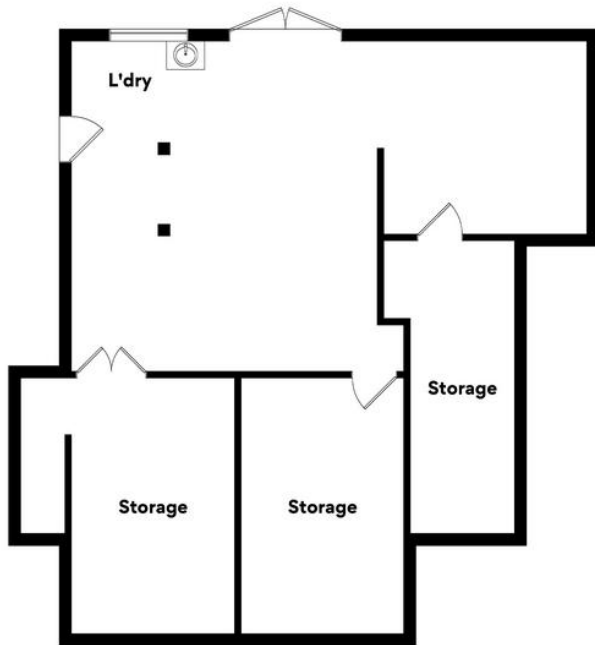
More About this Property

Property ID	1DJGF4N
Property Type	House
House Size	101 m2
Land Area	291 m2
Including	Air Conditioning Toilets (2) Built-in-Robes

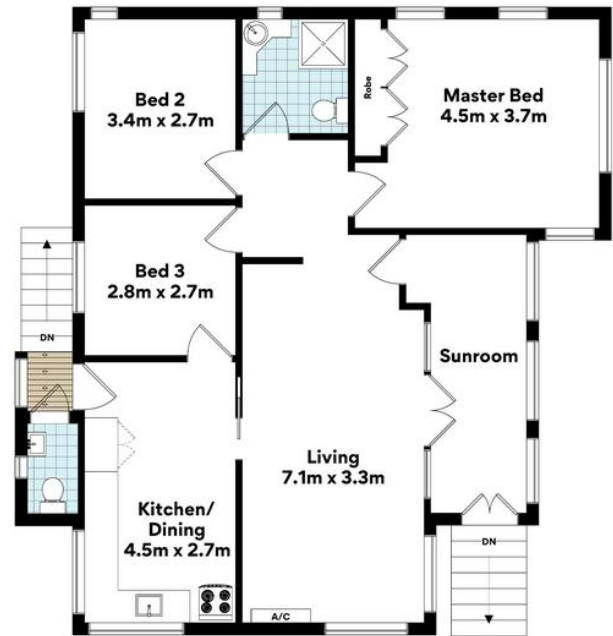
Richard Mirosh 0414 512 776
Principal | richard.mirosh@ljhooker.com.au

LJ Hooker Stafford (07) 3357 1888
205 Stafford Road, STAFFORD QLD 4053
stafford.ljhooker.com.au | stafford@ljhooker.com.au





GROUND FLOOR



FIRST FLOOR



56 Sizer St, Everton Park

FLOOR AREA SIZES

Internal 100.5m² | External 0.9m² | Storage/L'dry 101.4m² | **TOTAL 202.8m²**

Whilst every attempt has been made to ensure the accuracy of the floor plans contained here, measurements of doors, windows, rooms and any other items are approximate and no responsibility is taken for any error, omission or misstatement. These plans are for representation purposes only. Provided by primepixels.com.au