



Everton Park, 49 Gearside Street

PERFECT STARTER !!!

This lovely timber home with brick base screams potential with its versatile floorplan, located in an elevated and quiet leaf street. This entry level post war with brick base is on a large useable child friendly 607 m2 and ready to add your finishing touches. Providing buyers an opportunity to enjoy one of Everton Park's best pockets just a short stroll to Park Lane with so many restaurants, cafes and bar's to enjoy an afternoon drink.

- Spacious living with airconditioning leading to light filled sunroom
- 3 large bedrooms with airconditioning to main
- Modern kitchen with freestanding oven with gas and dishwasher
- Lovely timber polished floors throughout
- Fully concreted area under with laundry and loads of storage
- Large child friendly yard
- Walking distance to shopping centres, cafés, restaurants and parks
- Surrounded by quality schools and various public transport options



For Sale
OFFERS

View
ljhooker.com.au/1BS5F4N

Contact
Richard Mirosh
0414 512 776
richard.mirosh@ljhooker.com.au



LJ Hooker Stafford
(07) 3357 1888

Disclaimer: All information contained therein is gathered from relevant third parties sources. We cannot guarantee or give any warranty about the information provided. Interested parties must rely solely on their own enquiries.

- Easy access into the CBD at just over 9.5km

You will have to be quick to secure this perfectly positioned home just a short stroll to the laneway dining precinct in Everton Park with its abundance of cafe's, restaurants, bars and Coles.

More About this Property

Property ID	1BS5F4N
Property Type	House
House Size	122 m ²
Land Area	607 m ²
Including	Air Conditioning Built-in-Robes Fully Fenced Water Tank

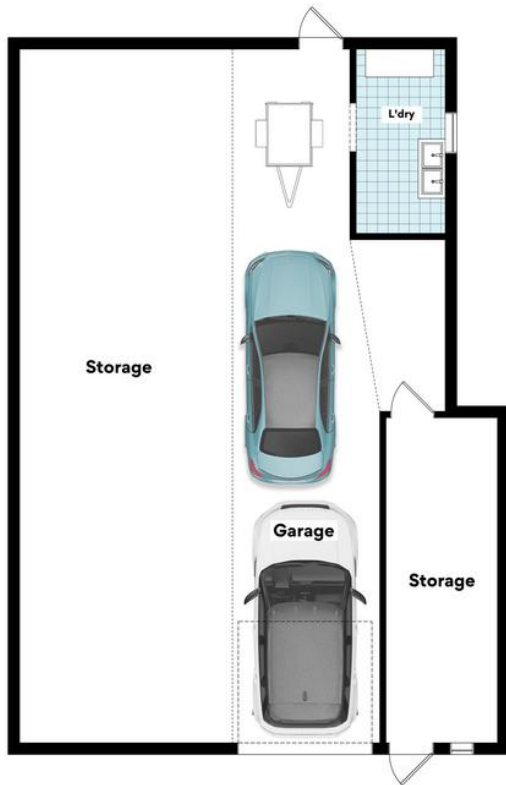
Richard Mirosch 0414 512 776
Principal | richard.mirosch@ljhooker.com.au

LJ Hooker Stafford (07) 3357 1888
205 Stafford Road, STAFFORD QLD 4053
stafford.ljhooker.com.au | stafford@ljhooker.com.au

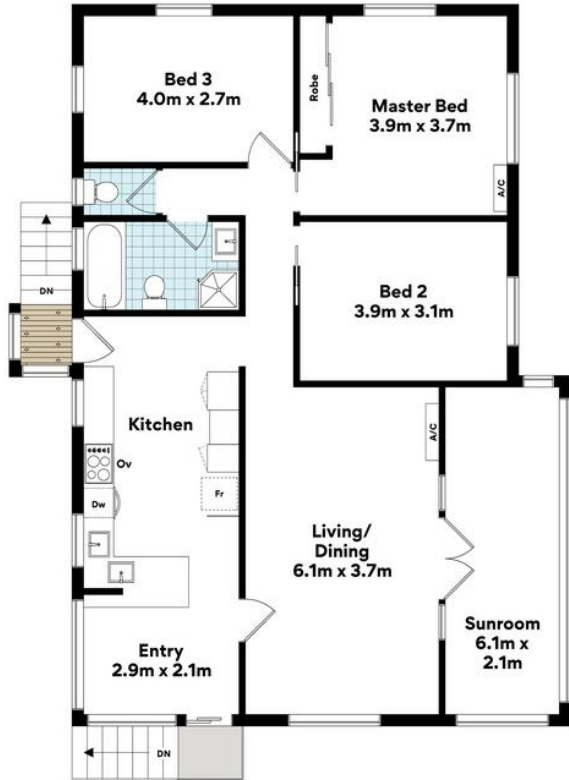


LJ Hooker Stafford
(07) 3357 1888

Disclaimer: All information contained therein is gathered from relevant third parties sources. We cannot guarantee or give any warranty about the information provided. Interested parties must rely solely on their own enquiries.



GROUND FLOOR



FIRST FLOOR



49 Gearside St, Everton Park

FLOOR AREA SIZES

Internal 122m² | External 3m² | Garage/Storage/L'dry 122m² | **TOTAL 247m²**

Whilst every attempt has been made to ensure the accuracy of the floor plans contained here, measurements of doors, windows, rooms and any other items are approximate and no responsibility is taken for any error, omission or misstatement. These plans are for representation purposes only. Provided by primerepels.com.au