



Everton Park, 28 Mountridge Street

DEVELOPMENT OPPORTUNITY, CORNER BLOCK,
AMAZING LOCATION!!

With development opportunity, this three-bedroom post war home is hitting the market for the first time ever!

Located in a quiet pocket of Everton Park, this 787sqm block offers the buyer plenty of opportunity. Positioned on a corner block with development potential (*STCA), or renovate the existing house, add a deck, large shed for caravans, boats and much more. If you are looking for a location to knock down and rebuild, this rare opportunity will suit you too.

Existing house has three bedrooms, open plan living, kitchen and dining area, front patio and large lock up storage area with internal access.

Additional features:

Block dimensions approx. 39.8m x 19m including corner block truncation



Disclaimer: All information contained therein is gathered from relevant third parties sources. We cannot guarantee or give any warranty about the information provided. Interested parties must rely solely on their own enquiries.

3

1

2

For Sale
UNDER CONTRACT

View
l.jhooker.com.au/1D2PF4N

Contact
Nathan Johnson
0434 101 821
nathan.johnson@l.jhooker.com.au

LJ Hooker Stafford
(07) 3357 1888

Near level yard
 Clear of services
 Brick base, timber top, tile roof
 Air-conditioned living area and main bedroom
 Ceiling fans throughout
 Polished hardwood floors
 Tandem double garage

Everton Park has been going through a demographic transformation in the past 5 years.
 Living here you are within walking distance to:

Everton Plaza, Coles, restaurants, bars, cafes and much more
 Everton Park Shopping Centre, Woolworths, variety of eateries and retail outlets
 Everton Park State High School
 Access to the Kedron Brook, cycling, running and walking paths
 Buses at the end of the street

This development opportunity is going to auction on Saturday 22nd March if not sold prior.

Contact Nathan Johnson 0434 101 821 for further information.

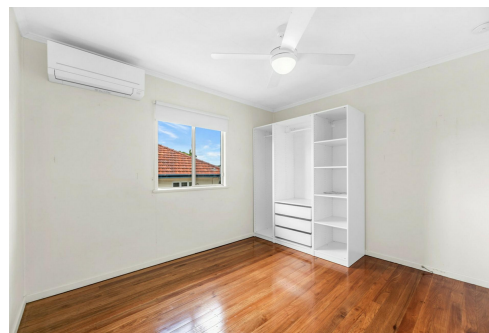
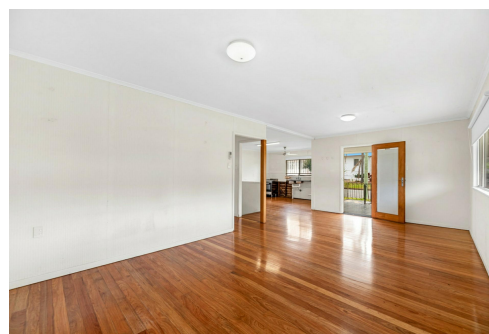
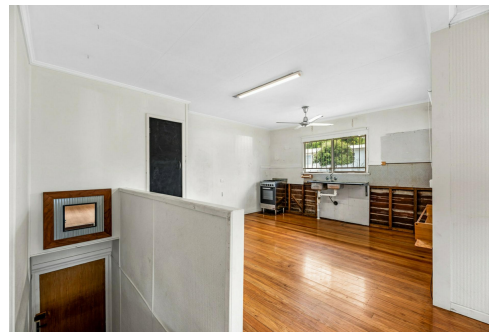
(*subject to council approval)

More About this Property

Property ID	1D2PF4N
Property Type	House
Land Area	787 m2

Nathan Johnson 0434 101 821
 Sales & Marketing Consultant | nathan.johnson@ljhooker.com.au

LJ Hooker Stafford (07) 3357 1888
 205 Stafford Road, STAFFORD QLD 4053
stafford.ljhooker.com.au | stafford@ljhooker.com.au

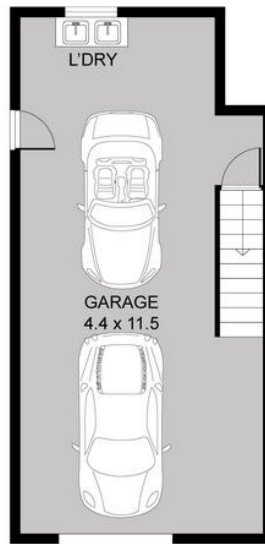


Disclaimer: All information contained therein is gathered from relevant third parties sources.
 We cannot guarantee or give any warranty about the information provided. Interested parties must rely solely on their own enquiries.

LJ Hooker Stafford
(07) 3357 1888

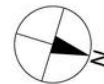


UPPER LEVEL



LOWER LEVEL

APPROXIMATE AREAS
 Internal: 149 sqm
 External: 8 sqm



28 Mountridge St, Everton Park

Disclaimer: Floor Plan measurements are approximate and are for illustrative purposes only. While we do not doubt the floor plans accuracy, we make no guarantee, warranty or representation as to the accuracy and completeness of the floor plan