



Everton Park, 27 Mountridge Street

POTENTIAL & OPPORTUNITY, READY TO SELL!!

Auction Location: On-site

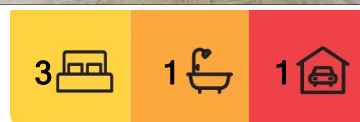
This entry level low-set timber post-war home is hitting the market for the first time in 34 years! Existing house has three bedrooms, open plan living, kitchen and dining area, front patio and single garage.

The home and location are screaming potential for either a full renovation or knockdown rebuild in a fast-changing pocket of Everton Park. Perfectly positioned on a large 607m2 block just a short stroll to the recently developed laneway dining precinct in Everton Park with its abundance of cafe's, restaurants, bars and Coles and Woolworths.

Living here you are within walking distance to Everton Park State High School, Everton Park State School, transport to Brisbane CBD, or cycle to the Kedron Brook where you have access to over 22km of running and bike paths and plenty of green-space.



Disclaimer: All information contained therein is gathered from relevant third parties sources. We cannot guarantee or give any warranty about the information provided. Interested parties must rely solely on their own enquiries.



For Sale
UNDER CONTRACT

View
By Appointment

Contact
Nathan Johnson
0434 101 821
nathan.johnson@ljhooker.com.au

LJ Hooker Stafford
(07) 3357 1888

Additional features include:

Spacious kitchen

Single garage

Block dimensions approx. 14.9m x 39.8m

Level block

Everton Park has been going through a demographic transformation in the past 5 years.

Living here you are within walking distance to:

Everton Plaza, Coles, restaurants, bars, cafes and much more

Everton Park Shopping Centre, Woolworths, variety of eateries and retail outlets

Everton Park State High School

Access to the Kedron Brook, cycling, running and walking paths

Buses at the end of the street

Only 9km to CBD and easy access to Brisbane airport

This opportunity is going to auction on Saturday 23rd August 2025.

For more information on this excellent opportunity, give Nathan a call before it's too late!

More About this Property

Property ID	1DRCF4N
Property Type	House
Land Area	607 m2
Including	Built-in-Robes Fully Fenced

Nathan Johnson 0434 101 821

Sales & Marketing Consultant | nathan.johnson@ljhooker.com.au

LJ Hooker Stafford (07) 3357 1888

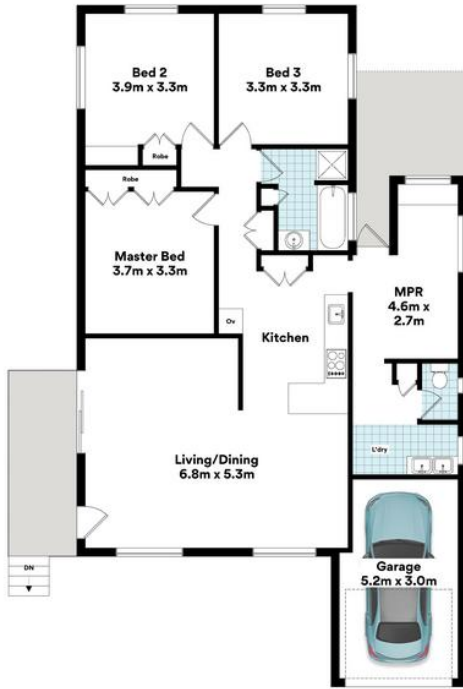
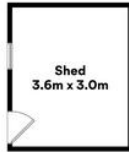
205 Stafford Road, STAFFORD QLD 4053

stafford.ljhooker.com.au | stafford@ljhooker.com.au



Disclaimer: All information contained therein is gathered from relevant third parties sources. We cannot guarantee or give any warranty about the information provided. Interested parties must rely solely on their own enquiries.

LJ Hooker Stafford
(07) 3357 1888



27 Mountridge St, Everton Park



FLOOR AREA SIZES

Internal	123.2m ²
External	17.8m ²
Garage	18.0m ²
Shed	10.8m ²
TOTAL	169.8m²

Whilst every attempt has been made to ensure the accuracy of the floor plans contained here, measurements of doors, windows, rooms and any other items are approximate and no responsibility is taken for any error, omission or misstatement.

These plans are for representation purposes only. Provided by primetivels.com.au