

Evanston Park, 5 Crace Court

Spacious 5-bedroom three-living area home!

5  2  2 

This is the ultimate family home, offering space, modern upgrades, and endless possibilities.

Nestled in a peaceful court, this expansive 5-bedroom home sits on a generous 1,030sqm approx. block, offering 270sqm approx. of living space. Conveniently located within a safe walking distance to Trinity College and Starplex, this home is perfect for growing families seeking space, comfort, and modern upgrades.

Step inside to discover a new modern kitchen, fresh internal paint, and multiple living areas for relaxation and entertaining. The master suite is a true retreat, featuring his and hers walk-in robes and a luxurious ensuite with a two-person spa. Bedrooms 2 and 4 include walk-in robes, while bedroom 3 has a built-in robe. Bedroom 5 offers flexibility as a home office or guest room.

For Sale
Contact Agent

View
ljhooker.com.au/1V9PG54

Contact
Darren Hutton
0408 086 249
darrenh@ljhsales.com.au
Matthew Nudo
0497 804 034
matthewn@ljhsales.com.au



LJ Hooker Gawler | Barossa
(08) 8522 3311

Disclaimer: All information contained therein is gathered from relevant third parties sources. We cannot guarantee or give any warranty about the information provided. Interested parties must rely solely on their own enquiries.

The formal sunken lounge and open-plan family and meals area flow seamlessly into a wraparound outdoor entertaining space, perfect for gatherings. An additional rumpus room with a bay window, extra toilet, and vanity provides even more space to enjoy.

Outside, the 12m x 6m shed with double-gate access is ideal for car enthusiasts, caravan storage, or a workshop. With ample off-street parking and a spacious backyard, there's room to add a pool while keeping plenty of space for kids and pets.

Comfort is ensured with evaporative cooling throughout and gas wall heating in the family room. This is truly an ideal family home with space to expand, entertain, and enjoy!

For further information please contact Darren Hutton on 0408 086 249.

All information provided has been obtained from sources we believe to be accurate, however, we cannot guarantee the information is accurate and we accept no liability for any errors or omissions (including but not limited to a property's land size, floor plans and size, building age and condition). Interested parties should make their own enquiries and obtain their own legal and financial advice. Should this property be scheduled for auction, the Vendor's Statement may be inspected at either of our two LJ Hooker Property Specialists Real Estate offices for 3 consecutive business days immediately preceding the auction and at the auction for 30 minutes before it starts. RLA 305453

More About this Property

Property ID	1V9PG54
Property Type	House
House Size	270 m2
Land Area	1030 m2
Including	Study Air Conditioning Ducted Cooling Evaporative Cooling Dishwasher Outdoor Entertaining Workshop Built-in-Robes Secure Parking Fully Fenced Water Tank

Darren Hutton 0408 086 249

Sales Partner | darrenh@ljhsales.com.au

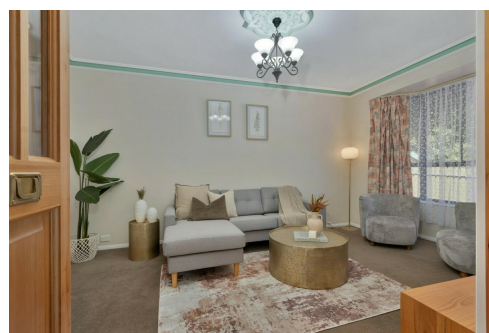
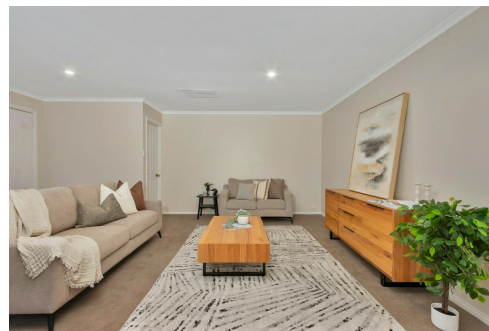
Matthew Nudo 0497 804 034

Sales Specialist | matthewn@ljhsales.com.au

LJ Hooker Gawler | Barossa (08) 8522 3311

26 Adelaide Road, GAWLER SA 5118

gawlerbarossa.ljhooker.com.au | gawler@ljhsupport.com.au



Disclaimer: All information contained therein is gathered from relevant third parties sources. We cannot guarantee or give any warranty about the information provided. Interested parties must rely solely on their own enquiries.

**LJ Hooker Gawler | Barossa
(08) 8522 3311**

5 Crace Court,
EVANSTON PARK



SITE PLAN
NOT TO SCALE

This Drawing is for illustration purposes only. All measurements are internal and approximate. Details intended to be relied upon should be independently verified.