



## Evanston Park, 39 Gleeson Grove

Spacious family living!

This is a magnificent opportunity to acquire a beautifully presented 5-bedroom family home on a generous corner allotment of approximately 675m<sup>2</sup>. With multiple living spaces, incredible outdoor entertaining area & side access to shedding, if space & practicality is what you are looking for, then this could be perfect for you!

Features include:

- \* 5 double bedrooms.
- \* Master bedroom with ensuite & walk-in robe.
- \* Built-in robes to bedrooms 2, 3, 4 & 5.
- \* Tastefully updated main bathroom with separate toilet.
- \* Separate formal lounge/living room located towards the front of the home.
- \* Spacious open plan kitchen/dining/family room.
- \* Practically designed kitchen with quality appliances, dishwasher & plenty of storage.

5 2 4

**For Sale**  
\$775,000 - \$825,000

**View**  
[ljhooker.com.au/1V9RG54](http://ljhooker.com.au/1V9RG54)

**Contact**  
**Jared Lund**  
0433 762 225  
[jaredl@ljhsales.com.au](mailto:jaredl@ljhsales.com.au)

**Darren Hutton**  
0408 086 249  
[darrenh@ljhsales.com.au](mailto:darrenh@ljhsales.com.au)



**Disclaimer:** All information contained therein is gathered from relevant third parties sources. We cannot guarantee or give any warranty about the information provided. Interested parties must rely solely on their own enquiries.

**LJ Hooker Gawler | Barossa**  
**(08) 8522 3311**

- \* Ducted evaporative cooling & gas heating throughout.
- \* Double carport under the main roof as well as side access to an additional double garage/shed.
- \* Huge pitched roof undercover outdoor entertaining area.
- \* Landscaped & established gardens including large lawn area.

With so much on offer, we strongly recommend you view this property in person to appreciate in its entirety. For any further information, or to make a time too inspect this property, please contact Jared Lund on 0433 762 225.

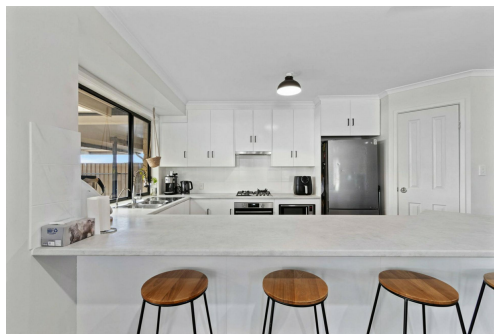
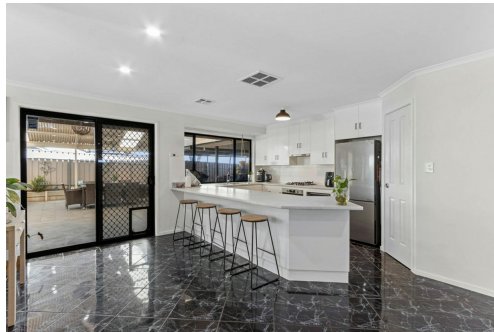
All information provided has been obtained from sources we believe to be accurate, however, we cannot guarantee the information is accurate and we accept no liability for any errors or omissions (including but not limited to a property's land size, floor plans and size, building age and condition). Interested parties should make their own enquiries and obtain their own legal and financial advice. Should this property be scheduled for auction, the Vendor's Statement may be inspected at either of our two LJ Hooker Property Specialists Real Estate offices for 3 consecutive business days immediately preceding the auction and at the auction for 30 minutes before it starts. RLA 305453

## More About this Property

Property ID	1V9RG54
Property Type	House
House Size	220 m2
Land Area	675 m2
Including	Air Conditioning Ducted Cooling Ducted Heating Evaporative Cooling Dishwasher Outdoor Entertaining Workshop Built-in-Robes Secure Parking Remote Garage Solar Panels

**Jared Lund 0433 762 225**  
Managing Director | [jaredl@ljhsales.com.au](mailto:jaredl@ljhsales.com.au)  
**Darren Hutton 0408 086 249**  
Sales Partner | [darrenh@ljhsales.com.au](mailto:darrenh@ljhsales.com.au)

**LJ Hooker Gawler | Barossa (08) 8522 3311**  
26 Adelaide Road, GAWLER SA 5118  
[gawlerbarossa.ljhooker.com.au](http://gawlerbarossa.ljhooker.com.au) | [gawler@ljhsupport.com.au](mailto:gawler@ljhsupport.com.au)



**Disclaimer:** All information contained therein is gathered from relevant third parties sources. We cannot guarantee or give any warranty about the information provided. Interested parties must rely solely on their own enquiries.

**LJ Hooker Gawler | Barossa**  
**(08) 8522 3311**





Living:	211.495QM
Verandah:	105.005QM
Carport:	54.915QM
Shed:	85.005QM
<b>TOTAL:</b>	<b>456.405QM</b>

This Drawing is for illustration purposes only. All measurements are internal and approximate. Details intended to be relied upon should be independently verified.