

Evanston Gardens, 42 Gonis Circuit

AFFORDABLE FAMILY LIVING



Welcome to 42 Gonis Circuit, Evanston Gardens!

What a great way to enter the market as a first home buyer, upsizing or investing with this ideal four-bedroom family home. Situated in the up and coming Orleana Waters Estate.

Features include

- * Four Bedrooms
- * Master with ensuite and walk-in robe
- * Built-in robes to bedroom two, three and four
- * Kitchen with breakfast bar and s/steel appliances
- * Open Plan meals and Family room
- * Centrally Located main bathroom
- * Separate front lounge room or large study
- * Double Garage with internal entry
- * Alfresco entertaining

For Sale
\$679,000

View
ljhooker.com.au/2AXZGJU

Contact
Craig Ricciuto
0417 806 329
craigr@ljhsales.com.au



Disclaimer: All information contained therein is gathered from relevant third parties sources. We cannot guarantee or give any warranty about the information provided. Interested parties must rely solely on their own enquiries.

**LJ Hooker Greenwith | Golden Grove
| Mawson Lakes | Modbury
(08) 8289 6660**

* Easy care front and rear Gardens

Easy access to the very popular Gawler Town Centre, local schools, shops, transport and all your entertainment needs.

All information provided has been obtained from sources we believe to be accurate, however, we cannot guarantee the information is accurate and we accept no liability for any errors or omissions (including but not limited to a property's land size, floor plans and size, building age and condition). Interested parties should make their own enquiries and obtain their own legal and financial advice. Should this property be scheduled for auction, the Vendor's Statement may be inspected at either of our two LJ Hooker Property Specialists Real Estate offices for 3 consecutive business days immediately preceding the auction and at the auction for 30 minutes before it starts.

RLA 208516

More About this Property

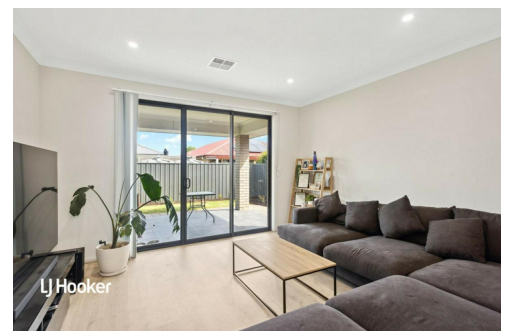
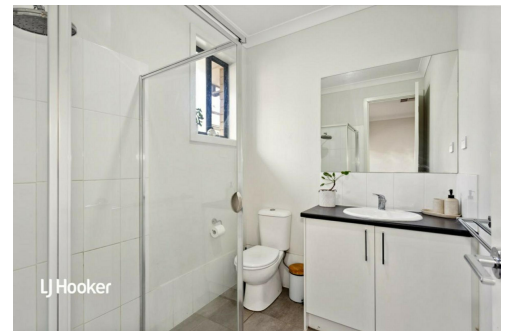
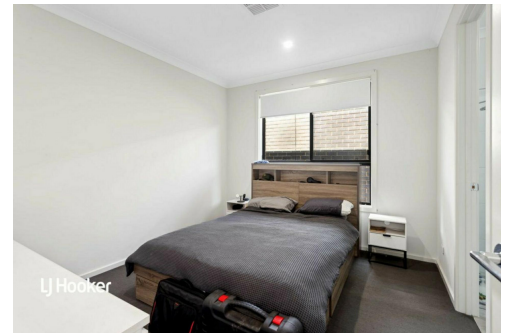
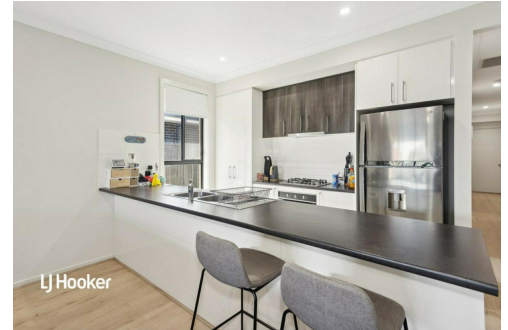
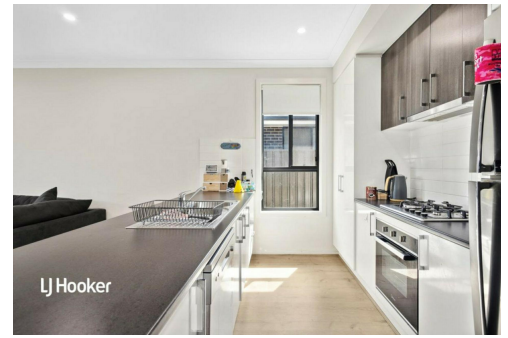
Property ID	2AXZGJU
Property Type	House
House Size	173 m ²
Land Area	375 m ²
Including	Air Conditioning Ducted Cooling Outdoor Entertaining Built-in-Robes Remote Garage

Craig Ricciuto 0417 806 329

Managing Partner | Sales Specialist | craigr@ljhsales.com.au

LJ Hooker Greenwith | Golden Grove | Mawson Lakes | Modbury (08) 8289 6660

North East, Shop 2, 1007 North East Road, RIDGEHAVEN SA 5097
greenwithgoldengrove.ljhooker.com.au | info@ljhsupport.com.au



Disclaimer: All information contained therein is gathered from relevant third parties sources. We cannot guarantee or give any warranty about the information provided. Interested parties must rely solely on their own enquiries.

**LJ Hooker Greenwith | Golden Grove
| Mawson Lakes | Modbury
(08) 8289 6660**



Scale in metres. This drawing is for illustration purposes only. All measurements are approximate and details intended to be relied upon should be independently verified. Produced by The Fotobase Group