



2/14 Whiting Road, Ettalong Beach

Contemporary Coastal Villa in the Heart of Ettalong

Ideally positioned in one of Ettalong's most sought-after avenues, this north-facing villa presents an exceptional opportunity to secure a modern home in a thriving coastal enclave. From here, enjoy the vibrant village atmosphere, with cafés, shops, dining, cinema, the golden foreshore, and the ferry to Palm Beach all within a short level walk.

Designed across a single level, the residence has been meticulously maintained, with light-filled interiors and quality finishes throughout. Open-plan living flows effortlessly to a sunlit courtyard, combining modern comfort with low-maintenance ease.

Equally appealing as a permanent home, a weekender, or a high-performing investment, the property offers unmatched lifestyle appeal in a suburb fast emerging as one of the Central Coast's most desirable destinations. With easy access to Sydney via Woy Woy station and direct ferry links to the Northern Beaches and Hawkesbury River, Ettalong delivers a rare balance of relaxed living and convenience.

Key Features

All information contained therein is gathered from relevant third parties sources. We cannot guarantee or give any warranty about the information provided. Interested parties must rely solely on their own enquiries.

3  2  2 

FOR SALE
\$1,250,000

AGENTS

Dougal Miller-Sneddon
0423 138 180
dougal.millersneddon@ljhooker.com.au

Tim Andrews
0412 663 065
tim.andrews@ljhooker.com.au

AGENCY

LJ Hooker Terrigal
(02) 4385 8444



- Open-plan living flowing to a north-facing courtyard and entertaining patio
- Modern kitchen with Caesarstone benchtop, breakfast bar, and quality appliances
- Master retreat with ensuite and walk-in robe for privacy and comfort
- Two additional double bedrooms, each with built-in wardrobes
- High ceilings, ducted air conditioning, and LED lighting throughout
- Beautiful polished floorboards and plantation shutters across the interiors
- Separate laundry, natural gas connection, and water tank for efficiency
- Remote double garage with secure internal access and ample storage
- " Quiet, private, and secure boutique complex of only three villas
- " Level walk to Ettalong village, beach, cafés, shops, and ferry to Palm Beach

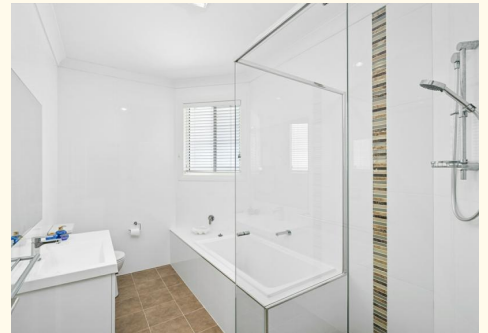
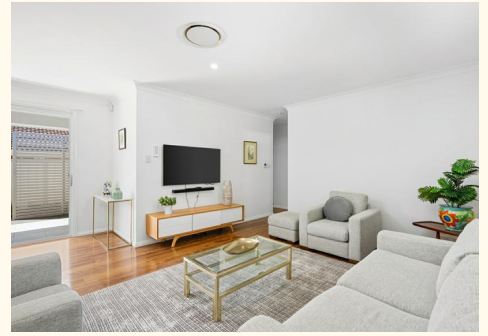
Council Rates: \$1,542.26 pa
 Water Rates: \$1,099.08 pa plus usage
 Strata Fees: \$1117.92 pq

MORE DETAILS

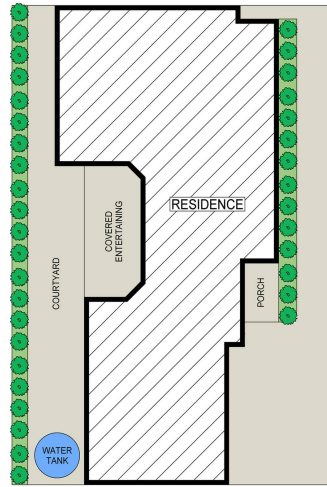
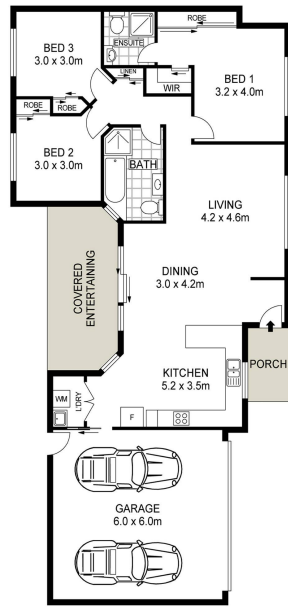
Property ID 1HCGGC1
 Property Type Villa

Dougal Miller-Sneddon 0423 138 180
 Sales Specialist - LREA | dougal.millersneddon@ljhooker.com.au
Tim Andrews 0412 663 065
 Principal / Licensee - LREA | tim.andrews@ljhooker.com.au

LJ Hooker Terrigal (02) 4385 8444
 Shop 1 & 2, 1 Campbell Crescent, TERRIGAL NSW 2260
terrigan.ljhooker.com.au | terrigan@ljhooker.com.au



2/14 Whiting Road, Ettalong Beach



SITE PLAN (NOT TO SCALE)

Scale in meter. Indicative only. Measurement and dimensions are approximate.
All information contained herein is gathered from source we believe to be reliable.
However we cannot guarantee its accuracy and interested persons should rely on their own enquiries.

