

26A Redding Rise, Epping

Quality-Built Townhouse in Sought-After Lyndarum Estate

The Property

Welcome to 26A Redding Rise, Epping. This modern and low-maintenance townhouse blends contemporary design with everyday comfort, making it an excellent choice for first-home buyers, downsizers, or investors. Featuring an open-plan layout, quality finishes, and a soft neutral palette, the home offers relaxed living in a peaceful and well-established pocket. Set within the sought-after Lyndarum Estate, it provides easy access to local schools, shopping centres, public transport, and parklands-perfectly positioned for a connected and convenient lifestyle.

The Point of Difference

- Step inside to a beautifully maintained home where large windows allow natural light to stream in, enhanced by a soft neutral palette and stylish finishes that create a warm and inviting atmosphere.
- An open plan living and dining zone forms the heart of the home, offering generous space for everyday living and effortless entertaining.
- The kitchen is well-appointed and beautifully finished, featuring stone benchtops, quality stainless steel appliances including a gas cooktop, under bench oven and dishwasher, a double-door pantry,

2 🏠 2 🚿 1 🚗

FOR SALE

\$495,000 - \$525,000

AGENTS

Mac Naidoo

0452 516 565

mac.naidoo@ljhooker.com.au

Mary Jamal

0451 145 598

mary.jamal@ljhooker.com.au

AGENCY

LJ Hooker Point Cook

(03) 9975 7080

All information contained therein is gathered from relevant third parties sources.

We cannot guarantee or give any warranty about the information provided.

Interested parties must rely solely on their own enquiries.



subway-tiled splashback, and cabinetry that provides plenty of storage.

- Upstairs, two spacious bedrooms provide comfortable accommodation, each with built-in robes. The main bedroom includes a private ensuite and a split system for added comfort, while the second bedroom is serviced by a contemporary central bathroom.
- The low-maintenance, landscaped courtyard offers a private outdoor space ideal for relaxed living with minimal upkeep.
- Additional features include a split system in the main living area, separate laundry, a single car garage, quality window furnishings, and feature lighting throughout.

The Point of Interest

Perfectly positioned to take advantage of Epping's thriving amenities, this home offers a lifestyle of true convenience. Enjoy easy access to local shopping at Aurora Village, Lyndarum Shopping Centre, and Pacific Epping, with Westfield Plenty Valley just a short drive away. Explore nearby parks and reserves, including Lyndarum Wetlands and Epping Recreation Reserve, or take comfort in zoning for respected schools such as Epping Secondary College and Epping Views Primary. With public transport and essential services close by, this is a home that delivers long-term value and exceptional lifestyle appeal.

Note. All stated dimensions are approximate only. Particulars given are for general information only and do not constitute any representation on the part of the vendor or agent. Any school zoning stated based is on www.findmyschool.vic.gov.au as of 28/07/25.

MORE DETAILS

Property ID 2GZ2HGH
Property Type Townhouse

Mac Naidoo 0452 516 565

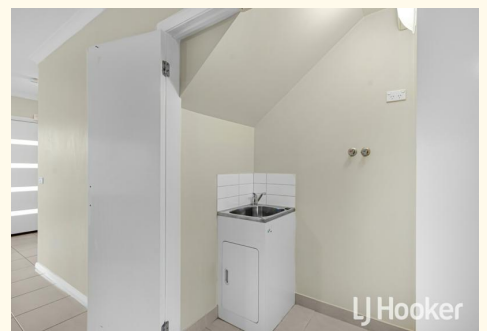
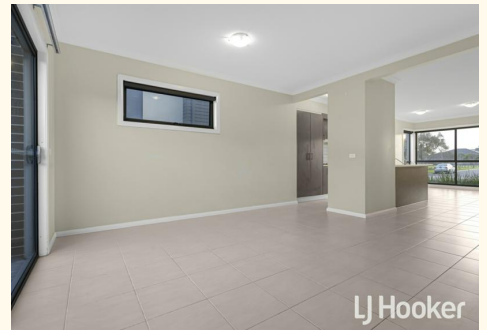
Sales Executive | mac.naidoo@ljhooker.com.au

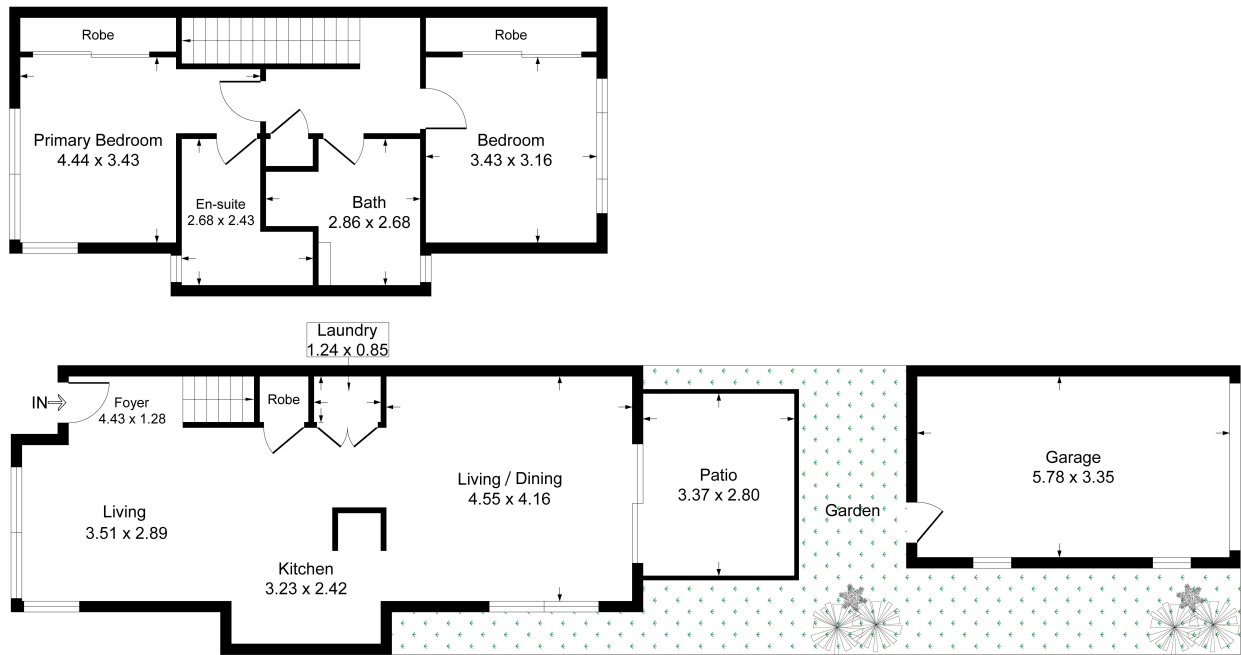
Mary Jamal 0451 145 598

Sales Associate | mary.jamal@ljhooker.com.au

LJ Hooker Point Cook (03) 9975 7080

Shop 211, 4 Main Street, POINT COOK VIC 3030
pointcook.ljhooker.com.au | pointcook@ljhooker.com.au





This floor plan including furniture, fixtures measurements and dimensions are approximate and for illustrative purpose only. Archer media gives no guarantee, warranty or representation as to the accuracy and layout. All enquiries must be directed to the agent, vendor or party representing this floor plan.



All information contained therein is gathered from relevant third parties sources. We cannot guarantee or give any warranty about the information provided. Interested parties must rely solely on their own enquiries.

