



6/2A Carlyle Street, Enfield

## SOLD BY JOE MURANIA

Affordable First Home or Investment in the Perfect Location

Perfectly positioned in a highly sought-after small full-brick complex of only 18, this well-presented apartment offers a well proportioned 78 sqm floorplan.

Featuring two generous bedrooms, both with built in wardrobes, an open plan kitchen, original bathroom with separate bath and shower, an internal laundry and a spacious, air-conditioned living room which flows out to an entertainers balcony with leafy district views.

The property also features secure parking in the basement with remote access to an easily accessed carspace.

Perfectly located only 300 metres to beautiful Henley Park and Aquatic Centre, with Burwood's vibrant restaurants, cafe's and Shopping Centre also only a short stroll away.

The perfect first home or investment at any affordable price.

Water: \$177.93  
Strata: \$1021.17  
Council: \$450

2 🏠 1 🚿 1 🚗

**FOR SALE**  
SOLD

### AGENTS

Joe Murania  
0416 044 267  
joe@ljhburwood.com.au

### AGENCY

LJ Hooker Burwood  
(02) 9745 3999

All information contained therein is gathered from relevant third parties sources.  
We cannot guarantee or give any warranty about the information provided.  
Interested parties must rely solely on their own enquiries.



## MORE DETAILS

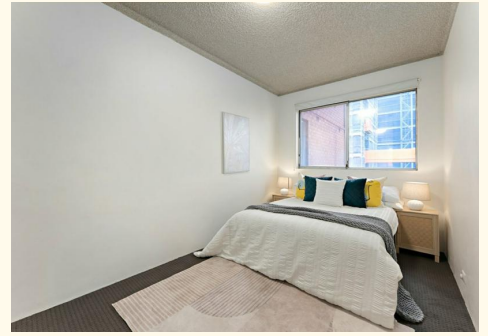
Property ID                    11W3F8R  
Property Type                Unit

**Joe Murania 0416 044 267**

Director | Sales Manager | [joe@ljhburwood.com.au](mailto:joe@ljhburwood.com.au)

**LJ Hooker Burwood (02) 9745 3999**

Shop 2/27-29 Burwood Road, BURWOOD NSW 2134  
[burwood.ljhooker.com.au](http://burwood.ljhooker.com.au) | [burwood@ljhburwood.com.au](mailto:burwood@ljhburwood.com.au)





6/2A Carlyle Street, Enfield

DISCLAIMER: THIS FLOOR PLAN IS INTENDED AS A GUIDE ONLY. IT DOES NOT CONSTITUTE PART OF ANY LEGAL DOCUMENTS. ALL DIMENSIONS ARE APPROXIMATE, ACTUAL MAY VARY. NO LIABILITY ACCEPTED. YOU MUST SEEK ADVICE FROM YOUR SOLICITOR. FLOOR PLAN BY WWW.MCPixelsAU.COM