






18 Peckover Court, Endeavour Hills

2  1  0 

Perfect Opportunity in the Heart of Endeavour Hills!

Positioned in a highly sought-after location and set on a generous 674m² (approx.) allotment, this charming home presents an outstanding opportunity for first home buyers, investors, or those looking to secure a property in a convenient and family-friendly neighborhood.

Ideally located within walking distance to the Endeavour Hills Shopping Centre, as well as local schools, parks, and public transport, the home offers both comfort and lifestyle convenience.

Inside, the home features two well-sized bedrooms serviced by a central bathroom, making it perfect for a small family, downsizers, or savvy investors. The welcoming lounge room flows through to the kitchen and meals area, creating a practical and comfortable living space ideal for everyday living.

The kitchen provides ample space for meal preparation and overlooks the meals area, ensuring a functional layout that makes entertaining or family dining easy.

Additional features include split system air conditioning for year-round

FOR SALE
CONTACT AGENT

AGENTS

Fatima Yazdani
0455 060 836
fatima.yazdani@ljhcasey.com.au

Fatima Yazdani
0455 060 836
fatima.yazdani@ljhcasey.com.au

AGENCY

LJ Hooker Hampton Park
(03) 9702 8388

All information contained therein is gathered from relevant third parties sources. We cannot guarantee or give any warranty about the information provided. Interested parties must rely solely on their own enquiries.

 **LJ Hooker**

comfort, plenty of natural light throughout, and a spacious backyard offering room to relax, entertain, or further enhance the property in the future (STCA).

With its large block size, prime location, and excellent potential, this property is a fantastic opportunity not to be missed.

A home in such a convenient location is hard to find. Inspect today and secure your place in the heart of Endeavour Hills!

Disclaimer: All information contained herein is gathered from sources we consider to be reliable. However, we cannot guarantee or give any warranty about the information provided, and interested parties must solely rely on their own enquiries.

MORE DETAILS

Property ID	47YPRFHE
Property Type	House
Land Area	674 m2

Fatima Yazdani 0455 060 836

Sales Agent | fatima.yazdani@ljhcasey.com.au

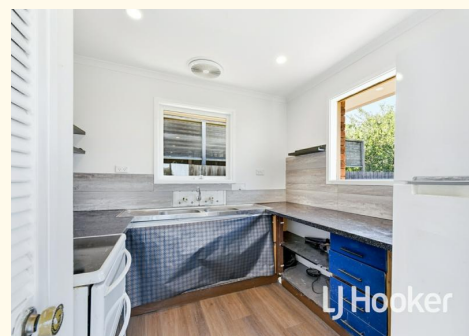
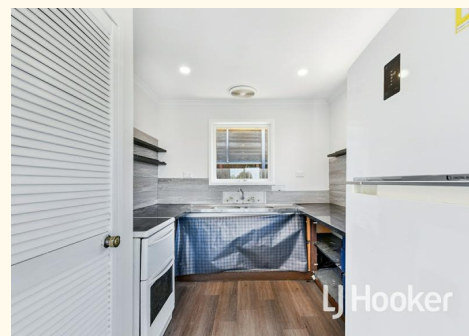
Fatima Yazdani 0455 060 836

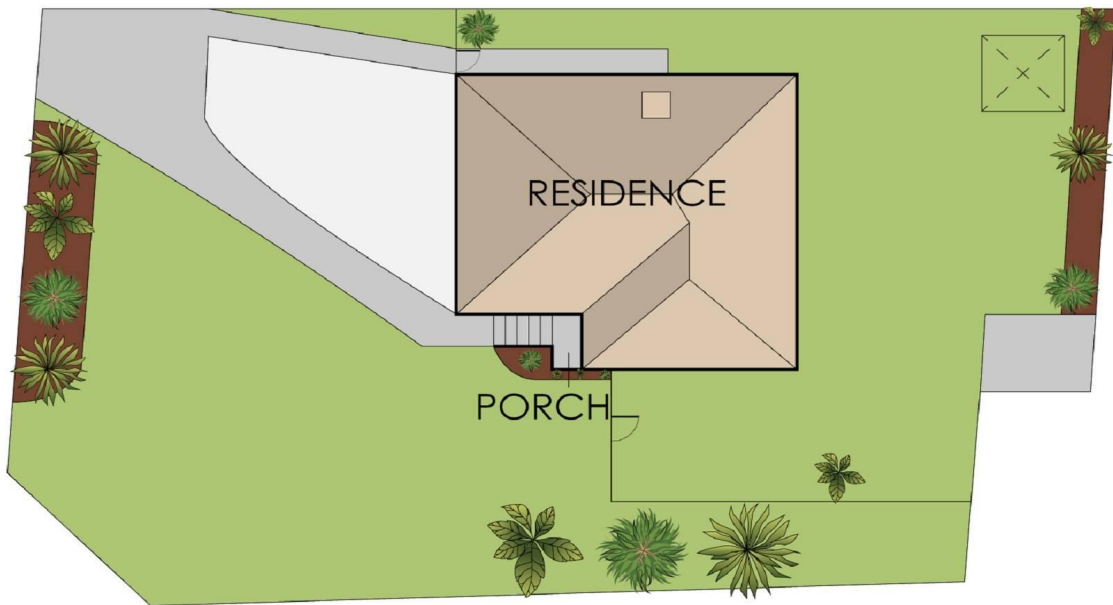
Sales Agent | fatima.yazdani@ljhcasey.com.au

LJ Hooker Hampton Park (03) 9702 8388

Shop 20, Hampton Park Shopping Centre, 166 Somerville Road,
HAMPTON PARK VIC 3976

hamptonpark.ljhooker.com.au | john.deo@ljhcasey.com.au





18 Peckover Court, Endeavour Hills

This floorplan is for illustration purposes only and no warranty is given to its accuracy. Purchasers are advised to carry out their own investigations.