



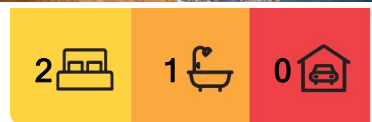
Elvina Bay, 35 Wirringulla Avenue

Charming Bush Retreat in Elvina Bay —A Tranquil Waterside Sanctuary

Escape to nature in this delightful two-bedroom home nestled in the serene enclave of Elvina Bay, one of Pittwater's best-kept secrets. With direct access to the water and surrounded by the lush greenery of Ku-ring-gai National Park, this property offers a rare blend of peaceful seclusion and connected convenience.

Set against a backdrop of native bushland and birdsong, the home exudes a warm, homely charm with a beautiful outlook across treetops and filtered water views. Inside, you'll find comfortable living spaces that invite relaxation and connection with nature. Step outside and you're moments away from scenic walking trails, coves, beaches, Salvation Creek and Linda waterfall -perfect for morning strolls or weekend adventures.

Elvina Bay is a tight-knit, welcoming community accessible only by water, giving it a peaceful, car-free atmosphere. Regular ferry services from Church Point provide easy



For Sale

For Sale - Tranquil Waterside Sanctuary

View

By Appointment

Contact

Juliet Wills

0438 418 833

jwills@ljhmv.com.au



LJ Hooker Mona Vale
(02) 9979 8000

Disclaimer: All information contained therein is gathered from relevant third parties sources. We cannot guarantee or give any warranty about the information provided. Interested parties must rely solely on their own enquiries.

access to the mainland, where you'll find vibrant cafes, waterside restaurants, and a direct bus service to Mona Vale and the city. Elvina Bay to Church Point is a ten minute ferry trip and Church Point to the CBD is a 50 minute drive. Live in Paradise, an hour out of Sydney Central.

Whether you're looking for a weekend escape or a lifestyle change, this enchanting retreat offers the best of both worlds-natural beauty and community, tranquility and connection.

Contact us today to arrange your private viewing. This is more than a home —it's a lifestyle.

Disclaimer:

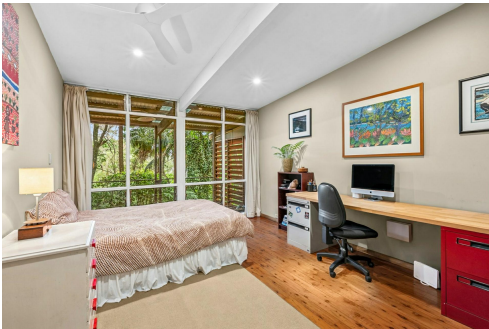
All information contained herewith, including but not limited to the general property description, price and the address, is provided to LJ Hooker Mona Vale by third parties. We have obtained this information from sources we believe to be reliable; however, we cannot guarantee its accuracy. The information contained herewith should not be relied upon and you should make your own enquiries and seek advice in respect of this property or any property on this website.

More About this Property

Property ID	2W3EF6K
Property Type	House
Land Area	556 m2

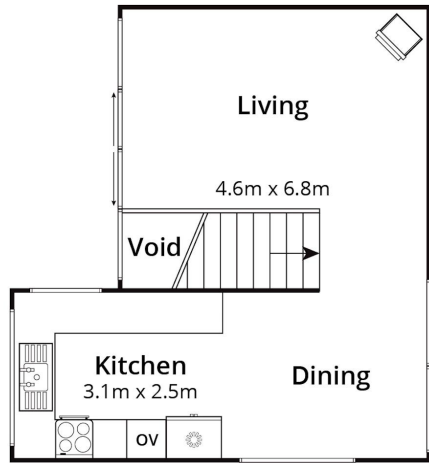
Juliet Wills 0438 418 833
Licensed Real Estate Agent | jwills@ljhmv.com.au

LJ Hooker Mona Vale (02) 9979 8000
3/18 Bungan Street, MONA VALE NSW 2103
monavale.ljhooker.com.au | monavale@ljhmv.com.au

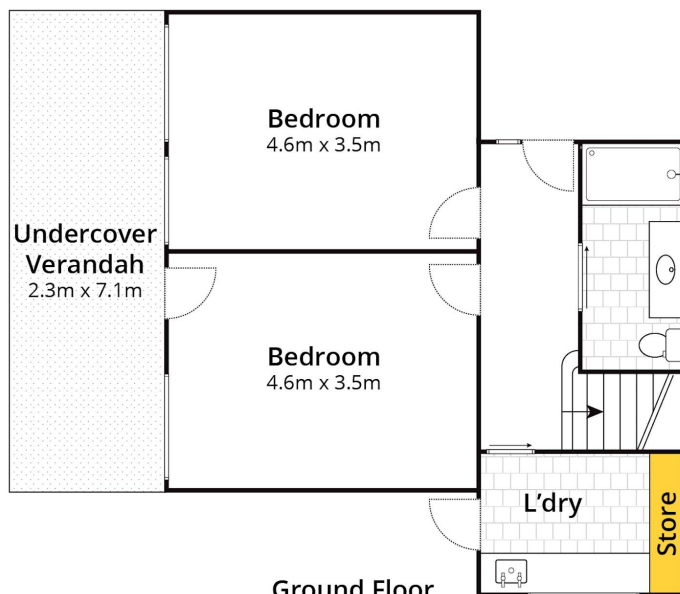


Disclaimer: All information contained therein is gathered from relevant third parties sources. We cannot guarantee or give any warranty about the information provided. Interested parties must rely solely on their own enquiries.

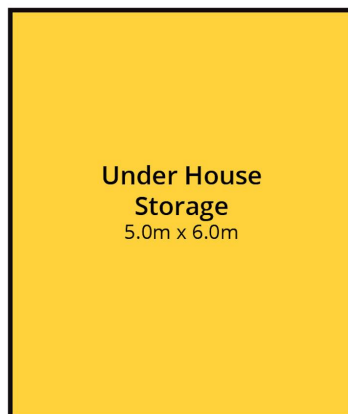
LJ Hooker Mona Vale
(02) 9979 8000



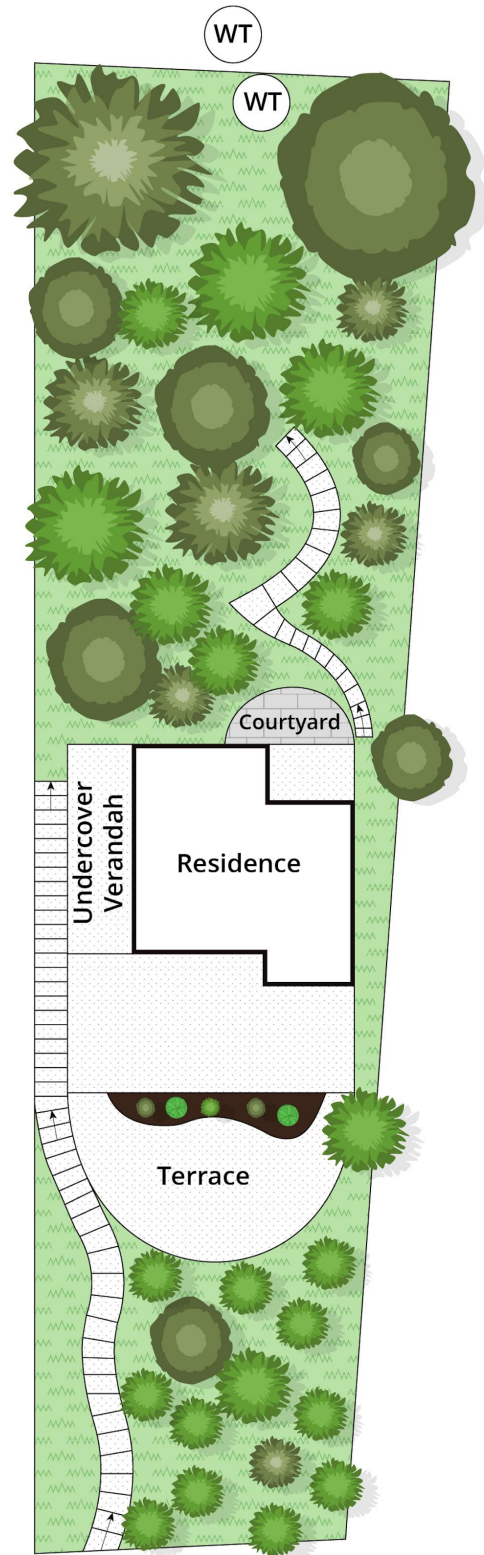
First Floor



Ground Floor



Lower Ground Floor



Site Plan

Whilst bwrn.com.au has made every attempt to ensure the accuracy of the floor plan contained here, measurements are approximate and no responsibility is taken for any error, omission, or mis-statement. This plan is for illustrative purposes only.

35 Wirringulla Avenue, Elvina Bay



LJ Hooker Mona Vale
(02) 9979 8000

Disclaimer: All information contained therein is gathered from relevant third parties sources. We cannot guarantee or give any warranty about the information provided. Interested parties must rely solely on their own enquiries.