



Elizabeth Vale, 35/47 Jarvis Road

Solid Brick Investment

Are you looking for a secure low maintenance investment property?

Located close to Salisbury central and close to the ever expanding Lyell McEwin hospital, schools and parks a short distance away, ample parking & public transport just out front of the complex.

Features of this unit include:

- Ground floor corner unit
- Two good size bedrooms
- Gas cooking and hot water
- Window air conditioner
- Formal front lounge
- Eat in kitchen



Disclaimer: All information contained therein is gathered from relevant third parties sources. We cannot guarantee or give any warranty about the information provided. Interested parties must rely solely on their own enquiries.



For Sale

\$269,950

View

ljhooker.com.au/64T0FDC

Contact

Corey Voss

0412 262 180

corey.voss@ljhces.com.au

Steve Jacobs

0411 045 329

steve.jacobs@ljhces.com.au

**LJ Hooker Craigmore | Elizabeth |
Salisbury**

(08) 8255 9555

-Linen storage

The unit has a tenant on a fixed lease until April 2024 and the weekly rent amount is \$265.00. The home is also only 28km to the Adelaide CBD with close access to main north road heading south toward Adelaide and north toward the main shopping centres of Elizabeth and Munno Para.

Phone Corey for a private inspection time, 0412 262 180.

Disclaimer:

We have in preparing this document used our best endeavours to ensure the information contained is true and accurate, but accept no responsibility and disclaim all liability in respect to any errors, omissions, inaccuracies or misstatements contained. Prospective purchasers should make their own enquiries to verify the information contained in this document.

RLA155355



More About this Property

Property ID	64T0FDC
Property Type	House

Corey Voss 0412 262 180

Licensee & Senior Sales Representative | corey.voss@ljhces.com.au

Steve Jacobs 0411 045 329

Sales Representative | steve.jacobs@ljhces.com.au

LJ Hooker Craigmores | Elizabeth | Salisbury (08) 8255 9555

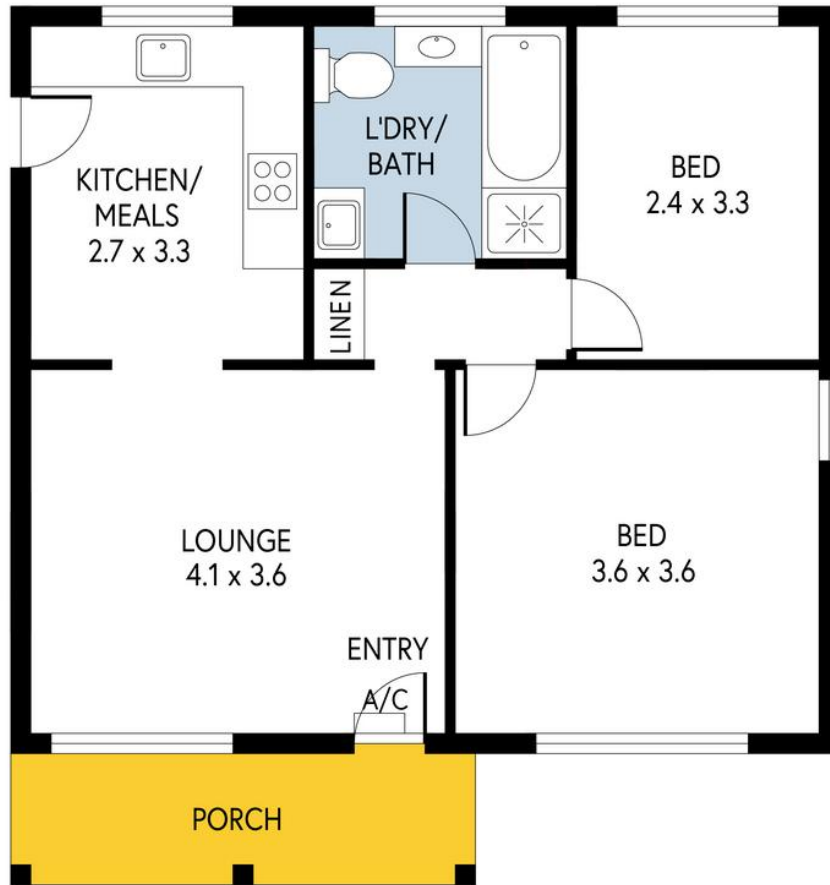
Shop 17, Craigmores Village, Yorktown Road, CRAIGMORE SA 5114

craigmoreelizabeth.ljhooker.com.au | Office@ljhces.com.au



Disclaimer: All information contained therein is gathered from relevant third parties sources. We cannot guarantee or give any warranty about the information provided. Interested parties must rely solely on their own enquiries.

**LJ Hooker Craigmores | Elizabeth |
Salisbury
(08) 8255 9555**



35/47 JARVIS ROAD, ELIZABETH VALE

INTERNAL - 60.7 SQM
 EXTERNAL - 6.0 SQM
 TOTAL - 66.7 SQM

Please Note: Every care has been taken to verify the correctness of the areas and details used in this leaflet. No warranty or representation is given or made as to the correctness of the information supplied and neither the owners, illustrator nor the Agent accept responsibility for errors or omissions. The sketch is for illustration purposes only and intending purchasers should satisfy themselves independently regarding sizes, layout and location of the property. Please check with local council that all structures are approved by council.

PRODUCED BY CLIQUECREATIVE



**LJ Hooker Craigmores | Elizabeth |
 Salisbury
 (08) 8255 9555**

Disclaimer: All information contained therein is gathered from relevant third parties sources. We cannot guarantee or give any warranty about the information provided. Interested parties must rely solely on their own enquiries.