



1/20 Daniel Street, Elizabeth Park

Everything You've Been Searching For!

Built in 2014 and showcasing high-end finishes throughout, this stunning double-storey home is the perfect blend of style, comfort, and practicality. From the moment you arrive, the impressive street appeal and contemporary design set the tone for what lies within.

Stepping inside, you'll be greeted by a modern, neutral colour scheme and an effortless flow through the home. The master bedroom is conveniently located downstairs and features a spacious walk-in robe and private ensuite. Continue through the hallway to find the heart of the home - an open-plan kitchen, living, and dining area filled with natural light.

The kitchen is beautifully appointed with stone benchtops, a gas cooktop, stainless steel rangehood, double sinks, and a dishwasher - all finished to an impeccable standard. A downstairs powder room and laundry add to the home's practicality and convenience.

Upstairs offers three generous bedrooms, two with built-in robes, a stylish family bathroom, and a separate family room - the perfect retreat for kids or guests.

4  2  2 

FOR SALE
UNDER CONTRACT

AGENTS

Andrew Rose
0421 988 597
andrew.rose@ljhces.com.au

James Frencken
0476 871 921
james.frencken@ljhces.com.au

AGENCY

LJ Hooker Craigmore | Elizabeth |
Salisbury
(08) 8255 9555

All information contained therein is gathered from relevant third parties sources.
We cannot guarantee or give any warranty about the information provided.
Interested parties must rely solely on their own enquiries.

 **LJ Hooker**

Step outside to a gorgeous verandah area overlooking a freshly grassed backyard, complete with a new irrigation system. It's the perfect space for entertaining, relaxing, and watching the kids or pets play.

Key features we love:

- High End Finishes Throughout
- Stunning Modern Kitchen and Bathroom
- Ducted Reverse Cycle
- Roller Shutter to Main Bedroom
- Beautiful Stylish Verandah
- Double Garage
- Close to Sporting Clubs, Parks and Schools.
- 283 Sqm Allotment (approx.)

Specifications:

- CT / 6110/198
- Title / Community
- Community Fees / \$150 per Quarter (approx.)
- Council / Playford
- Built / 2014
- Land / 283m2 (approx.)
- Easements / Nil
- Estimated rental assessment / \$580 to \$610 per week

Ideally positioned near Argana Park with its sporting clubs and open spaces, and within close proximity to quality schools including St Thomas More and St Mary Magdalene's Primary. Munno Para and Elizabeth Shopping Centres are also nearby, offering an abundance of restaurants, gyms, doctors, and shopping options for all your daily needs.

If you're looking for your next family home where everything has already been done for you - this one is an absolute must-see.

Contact Andrew Rose today to find out more or arrange your viewing.

Disclaimer:

We have in preparing this document used our best endeavours to ensure the information contained is true and accurate, but accept no responsibility and disclaim all liability in respect to any errors, omissions, inaccuracies or misstatements contained. Prospective purchasers should make their own enquiries to verify the information contained in this document.

RLA155355

MORE DETAILS

Property ID 67WGFDC
Property Type House
Including Air Conditioning
Toilets (3)
Alarm
Secure Parking

Andrew Rose 0421 988 597

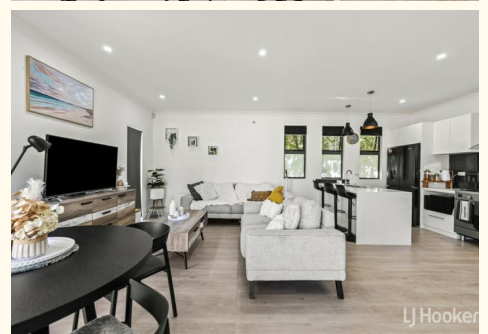
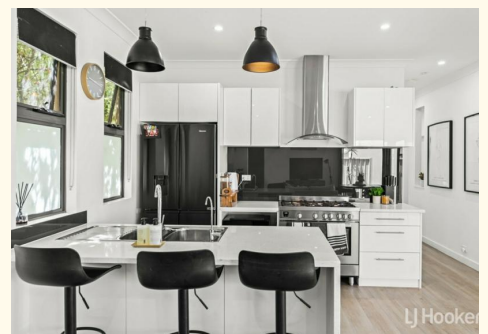
Senior Sales Representative | andrew.rose@ljhces.com.au

James Frencken 0476 871 921

Sales Representative | james.frencken@ljhces.com.au

LJ Hooker Craigmore | Elizabeth | Salisbury (08) 8255 9555

Shop 17, Craigmore Village, Yorktown Road, CRAIGMORE SA 5114
craigmoreelizabeth.ljhooker.com.au | Office@ljhces.com.au





1/20 Daniel Street, Elizabeth Park

INTERNAL	- 151.0 SQM
EXTERNAL	- 46.9 SQM
TOTAL	- 197.9 SQM

Please Note: Every care has been taken to verify the correctness of the areas and details used in this leaflet. No warranty or representation is given or made as to the correctness of the information supplied and neither the owners, illustrators nor the Agent accept responsibility for errors or omissions. The sketch is for illustration purposes only and intending purchasers should satisfy themselves independently regarding sizes, layout and location of the property. Please check with local council that all structures are approved by council.