

Elizabeth Park, 27 Salway Street

Your Next Chapter Starts Here!



Proudly presented by Andrew Rose of LJ Hooker, this charming three-bedroom home, built in 1970, rests on a generous 624sqm (approx.) allotment in a fantastic location.

Step inside to a spacious entry hall that seamlessly connects to the inviting living area—perfect for cozy family movie nights. The kitchen, equipped with electric cooking, offers ample space for meal preparation and overlooks the dining room, creating a warm and functional space for everyday living.

All three bedrooms are well-proportioned and feature built-in robes, while the centrally located bathroom ensures convenience for the entire household.

Outside, the appeal continues. The expansive rear verandah provides an ideal setting for entertaining, whether it's hosting barbecues or simply unwinding while watching the kids and pets enjoy the lawn. A lined shed offers versatile space for storage, a workshop, or a

For Sale
UNDER CONTRACT BY ANDREW ROSE

View
ljhooker.com.au/66SBFDC

Contact
Andrew Rose
0421 988 597
andrew.rose@ljhces.com.au
Gareth Dickins
0417883329
gareth.dickins@ljhces.com.au



Disclaimer: All information contained therein is gathered from relevant third parties sources. We cannot guarantee or give any warranty about the information provided. Interested parties must rely solely on their own enquiries.

LJ Hooker Craigmore | Elizabeth | Salisbury
(08) 8255 9555

handyman's retreat. Multiple parking options include a well-sized carport, which flows through to the undercover entertaining area and workshop.

Features we love:

- Spacious lined shed, perfect for storage or a workspace
- Large rear verandah, ideal for year-round entertaining
- Ample parking with a carport and additional spaces
- Low-maintenance gardens for effortless living
- Solar System
- 624 sqm Allotment (approx.) No Easements!

Specifications:

- CT / 5554/188
- Council / Playford
- Built / 1970
- Land / 624m2 (approx.)
- Easements / Nil
- Estimated rental assessment / \$470-\$490 per week

Conveniently positioned in the heart of Elizabeth Park, this home is just minutes from Elizabeth City Shopping Centre, Hope Christian College, and a variety of restaurants, cinemas, and gyms.

A fantastic opportunity for first-home buyers, families, or savvy investors-this is one you won't want to miss!

Disclaimer:

We have in preparing this document used our best endeavours to ensure the information contained is true and accurate, but accept no responsibility and disclaim all liability in respect to any errors, omissions, inaccuracies or misstatements contained. Prospective purchasers should make their own enquiries to verify the information contained in this document.

RLA155355

More About this Property

Property ID	66SBFDC
Property Type	House

Andrew Rose 0421 988 597

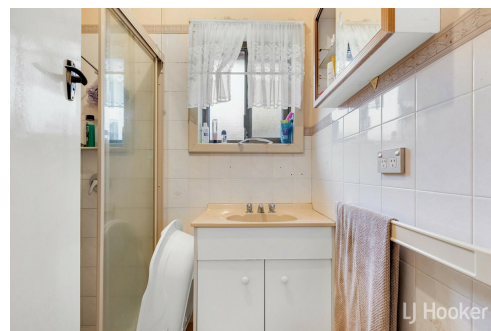
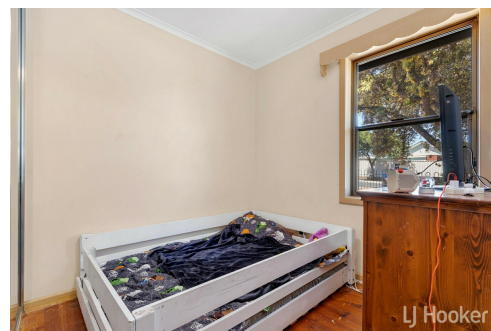
Senior Sales Representative | andrew.rose@ljhces.com.au

Gareth Dickins 0417883329

Sales Representative | gareth.dickins@ljhces.com.au

LJ Hooker Craigmores | Elizabeth | Salisbury (08) 8255 9555

Shop 17, Craigmores Village, Yorktown Road, CRAIGMORE SA 5114
craigmoreselizabeth.ljhooker.com.au | Office@ljhces.com.au



Disclaimer: All information contained therein is gathered from relevant third parties sources. We cannot guarantee or give any warranty about the information provided. Interested parties must rely solely on their own enquiries.

**LJ Hooker Craigmores | Elizabeth |
Salisbury
(08) 8255 9555**



27 Salway Street, Elizabeth Park

DISCLAIMER: Floorplan and area calculation are approximate and for illustration purposes only.
Produced by Property Portraits

Interior	104m ²	197m² TOTAL
Exterior	89m ²	
Shed	04m ²	