

Elizabeth Park, 25 Butler Street

Bring Your Vision to Life

Auction Location: 25 Butler Street, Elizabeth Park SA 5113

Unlock the potential of this three-bedroom home, nestled on a generous allotment with an impressive 20m (approx.) frontage. Whether you're dreaming of restoring a classic or building something brand new (subject to council consent and Planning SA), the possibilities here are truly exciting.

Located in a well-established and sought-after suburb, this property is brimming with opportunity for those ready to roll up their sleeves and breathe new life into a home with character. With a little imagination, determination and heart, this could be the beginning of something special!

Key Features:

* Three-bedroom layout



Disclaimer: All information contained therein is gathered from relevant third parties sources. We cannot guarantee or give any warranty about the information provided. Interested parties must rely solely on their own enquiries.



For Sale
\$450,000

View
ljhooker.com.au/2BQJGJU

Contact
Donna Staines
0456 844 103
donnas@ljhsales.com.au

**LJ Hooker Greenwith | Golden Grove
| Mawson Lakes | Modbury
(08) 8289 6660**

- * Generous 20m (approx.) frontage
- * Spacious allotment offering flexibility
- * Renovate or rebuild (STCC)
- * Outstanding opportunity in a growth location

Perfect for seasoned renovators, visionary developers, or anyone looking for a rewarding project. This is your chance to create something unique while capitalising on location, land size and long-term potential.

Opportunities like this are rare - bring your creativity, your passion and make this property the foundation of your next big dream.

All information provided has been obtained from sources we believe to be accurate, however, we cannot guarantee the information is accurate and we accept no liability for any errors or omissions (including but not limited to a property's land size, floor plans and size, building age and condition). Interested parties should make their own enquiries and obtain their own legal and financial advice. Should this property be scheduled for auction, the Vendor's Statement may be inspected at either of our two LJ Hooker Property Specialists Real Estate offices for 3 consecutive business days immediately preceding the auction and at the auction for 30 minutes before it starts.

RLA 208516

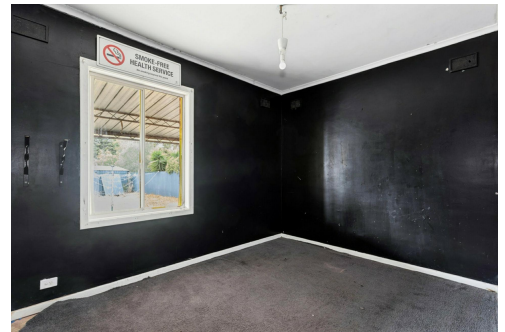
More About this Property

Property ID	2BQJGJU
Property Type	House
House Size	96 m2
Land Area	770 m2

Donna Staines 0456 844 103
Sales Specialist | donnas@ljhsales.com.au

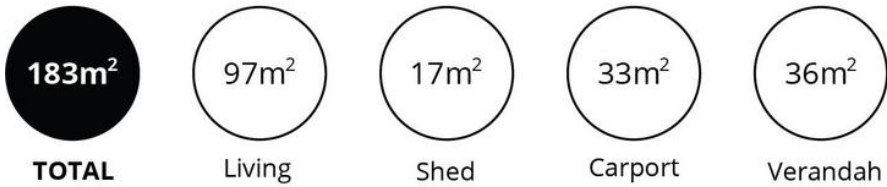
LJ Hooker Greenwith | Golden Grove | Mawson Lakes | Modbury (08) 8289 6660

North East, Shop 2, 1007 North East Road, RIDGEHAVEN SA 5097
greenwithgoldengrove.ljhooker.com.au | info@ljhsupport.com.au



Disclaimer: All information contained therein is gathered from relevant third parties sources. We cannot guarantee or give any warranty about the information provided. Interested parties must rely solely on their own enquiries.

**LJ Hooker Greenwith | Golden Grove
| Mawson Lakes | Modbury
(08) 8289 6660**



Scale in metres. This drawing is for illustration purposes only. All measurements are approximate and details intended to be relied upon should be independently verified.

Produced by **The Fotobase Group**