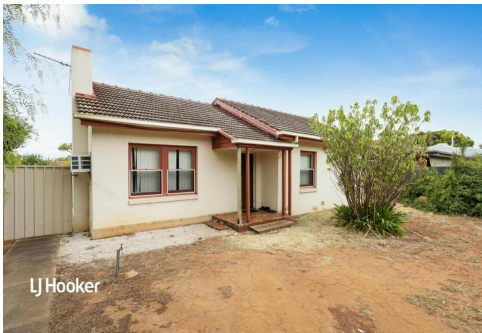
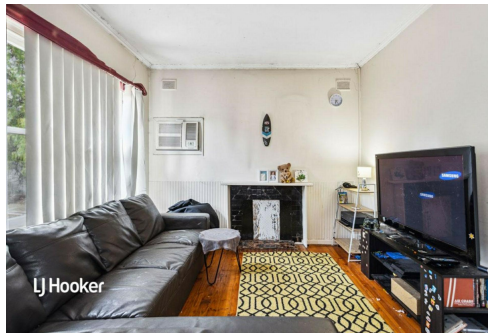




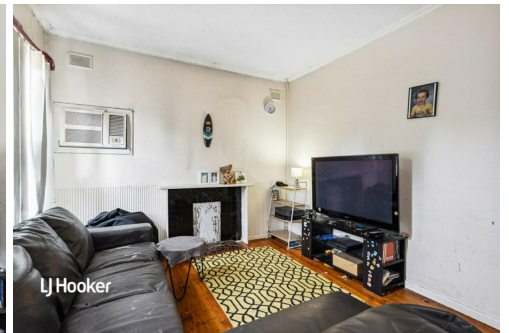
LJ Hooker



LJ Hooker



LJ Hooker



LJ Hooker

Elizabeth North, 669 Main North Road

What an Outstanding Investment Opportunity!

Set on a low traffic service road and in a great location, it is my pleasure to present to the market this fantastic three-bedroom family home. Set on a generous 730m2 (approx.) allotment, this property is perfect for astute investors to take advantage of. Currently tenanted until July 2024 at \$330pw, this is the perfect start, or addition, to your investment portfolio.

The home is set in the heart of the ever-changing and ever-growing suburb of Elizabeth North and is conveniently close to a multitude of schools, shops and sporting facilities. Only a 2 minute drive away from Munno Para Shopping City and only a short way further to Elizabeth City Centre makes the location one to be desired!

What you will love:



Disclaimer: All information contained therein is gathered from relevant third parties sources. We cannot guarantee or give any warranty about the information provided. Interested parties must rely solely on their own enquiries.



For Sale

Please Call

View

ljhooker.com.au/29YPGJU

Contact

Jordan Nockolds

0447 809 650

jordann@ljhsales.com.au

Bruno Caporella

0439 679 020

brunoc@ljhsales.com.au

LJ Hooker Greenwith | Golden Grove | Mawson Lakes | Modbury
(08) 8289 6660

- * No easements
- * Sub-dividable (STCC)
- * Large frontage
- * Three good-sized bedrooms
- * Spacious Kitchen and Dining area
- * Extremely Large back yard with plenty of greenery
- * Fully fenced yard

The home is ideal for anyone looking for a great starter home once the tenancy ends or those wanting to enjoy the high rental yields that the area offers. This property will not hang around long!

Year Built | 1973 (approx.)

Internal Living | 96sqm (approx.)

Land Size | 730sqm (approx.)

Frontage | 18.2m (approx.)

Title | Torrens

Easements | Nil

Zoning | GN – General Neighbourhood

Local Council | City of Playford

Council Rates | \$414.45 (approx.)

ES Levy | \$96.10pa (approx.)

All information provided has been obtained from sources we believe to be accurate, however, we cannot guarantee the information is accurate and we accept no liability for any errors or omissions (including but not limited to a property's land size, floor plans and size, building age and condition). Interested parties should make their own enquiries and obtain their own legal and financial advice. Should this property be scheduled for auction, the Vendor's Statement may be inspected at either of our two LJ Hooker Property Specialists Real Estate offices for 3 consecutive business days immediately preceding the auction and at the auction for 30 minutes before it starts.

RLA 208516



Disclaimer: All information contained therein is gathered from relevant third parties sources. We cannot guarantee or give any warranty about the information provided. Interested parties must rely solely on their own enquiries.

**LJ Hooker Greenwith | Golden
Grove | Mawson Lakes | Modbury
(08) 8289 6660**

More About this Property

Property ID	29YPGJU
Property Type	House
House Size	96 m ²
Land Area	730 m ²
Including	Air Conditioning

Jordan Nockolds

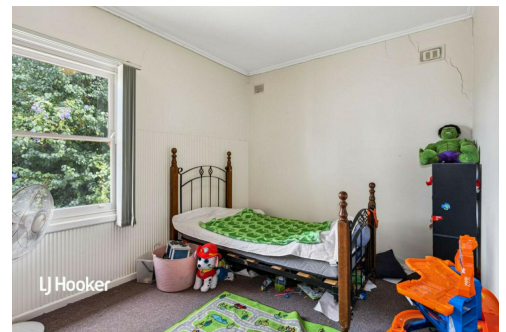
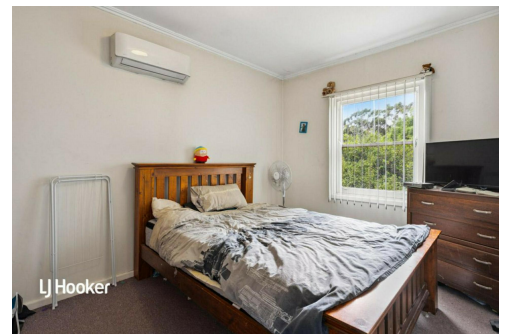
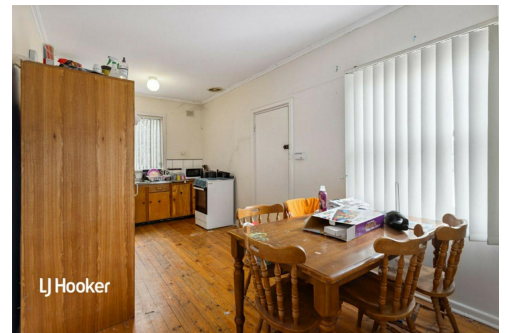
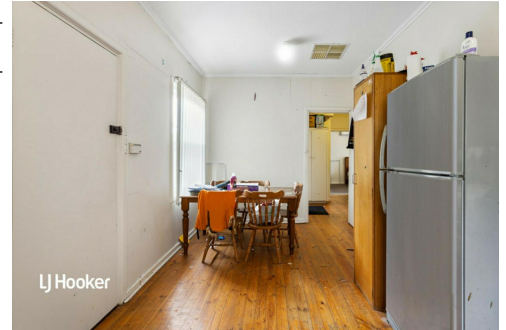
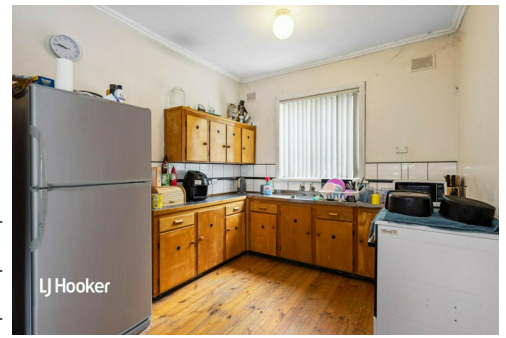
Sales Specialist | jordann@ljhsales.com.au

Bruno Caporella

Sales Specialist | Property Inspector | brunoc@ljhsales.com.au

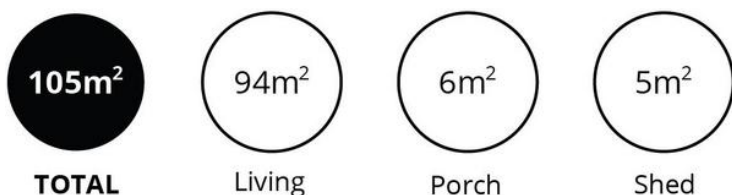
LJ Hooker Greenwith | Golden Grove | Mawson Lakes | Modbury (08) 8289 6660

North East, Shop 2, 1007 North East Road, RIDGEHAVEN SA 5097
greenwithgoldengrove.ljhooker.com.au | info@ljhsupport.com.au



Disclaimer: All information contained therein is gathered from relevant third parties sources. We cannot guarantee or give any warranty about the information provided. Interested parties must rely solely on their own enquiries.

LJ Hooker Greenwith | Golden Grove | Mawson Lakes | Modbury (08) 8289 6660



Scale in metres. This drawing is for illustration purposes only. All measurements are approximate and details intended to be relied upon should be independently verified.

Produced by **The Fotobase Group**



LJ Hooker Greenwith | Golden Grove | Mawson Lakes | Modbury
(08) 8289 6660

Disclaimer: All information contained therein is gathered from relevant third parties sources. We cannot guarantee or give any warranty about the information provided. Interested parties must rely solely on their own enquiries.