



## Elizabeth North, 29 Knighton Road

Starting out, Downsizing or Savvy Investors!

Step into this open-plan family home with inviting street appeal, presented by Andrew Rose and Team Rose from LJ Hooker. This property boasts a contemporary design with 3 bedrooms on a 706sqm block (approx.) —ready for you to move in and enjoy.

Inside, discover a comfortable living area that seamlessly connects to bedroom 1 and the open-plan meals/kitchen space. The adjoining area includes 2 bedrooms, a family bathroom with separate toilet, and a good-sized laundry with access to the rear yard.

The rear yard features a verandah area, perfect for entertaining friends and family, overlooking a spacious yard ideal for kids and pets to play. Additionally, there is a double length carport providing secure parking for your vehicles.

Key Features:

- 3 bedrooms



**Disclaimer:** All information contained therein is gathered from relevant third parties sources. We cannot guarantee or give any warranty about the information provided. Interested parties must rely solely on their own enquiries.

**SOLD**



**For Sale**  
UNDER CONTRACT BY ANDREW ROSE

**View**  
[ljhooker.com.au/66VPFDC](http://ljhooker.com.au/66VPFDC)

**Contact**  
**Andrew Rose**  
0421 988 597  
[andrew.rose@ljhces.com.au](mailto:andrew.rose@ljhces.com.au)

**LJ Hooker Craigmore | Elizabeth |  
Salisbury  
(08) 8255 9555**

- Kitchen
- Double length carport with roller door
- Good sized backyard

Specifications:

- CT: 5194 / 502
- Council: Playford
- Built: 1960
- Land: 706m<sup>2</sup> (approx.)
- Easement: Refer CT
- Estimated rental assessment: \$400 —\$430 per week

Nestled in Elizabeth North and only a short distance to the Womma Railway Station; Elizabeth North Primary School and centrally located between the major shopping centres of Elizabeth and Munno Para; and with plenty more parks, sports clubs, medical centres and Schools in the surrounding areas you have everything you need in easy reach.

Reach out to Andrew Rose today to schedule a viewing. Your ideal home is waiting for you!

Disclaimer:

We have in preparing this document used our best endeavours to ensure the information contained is true and accurate, but accept no responsibility and disclaim all liability in respect to any errors, omissions, inaccuracies or misstatements contained. Prospective purchasers should make their own enquiries to verify the information contained in this document.

RLA155355

## More About this Property

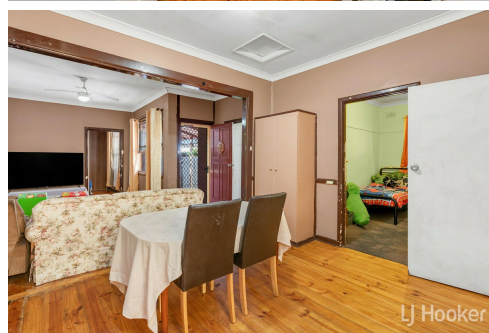
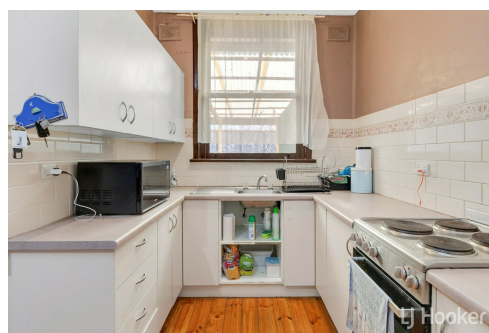
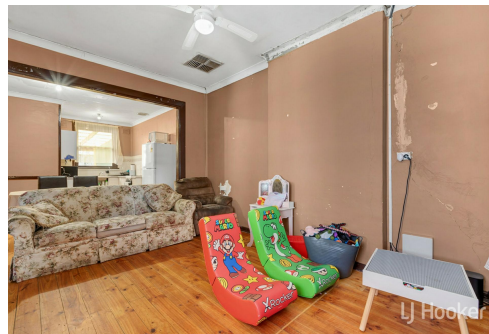
<b>Property ID</b>	66VPFDC
<b>Property Type</b>	House
<b>House Size</b>	86 m2
<b>Land Area</b>	706 m2

**Andrew Rose 0421 988 597**

Senior Sales Representative | [andrew.rose@ljhces.com.au](mailto:andrew.rose@ljhces.com.au)

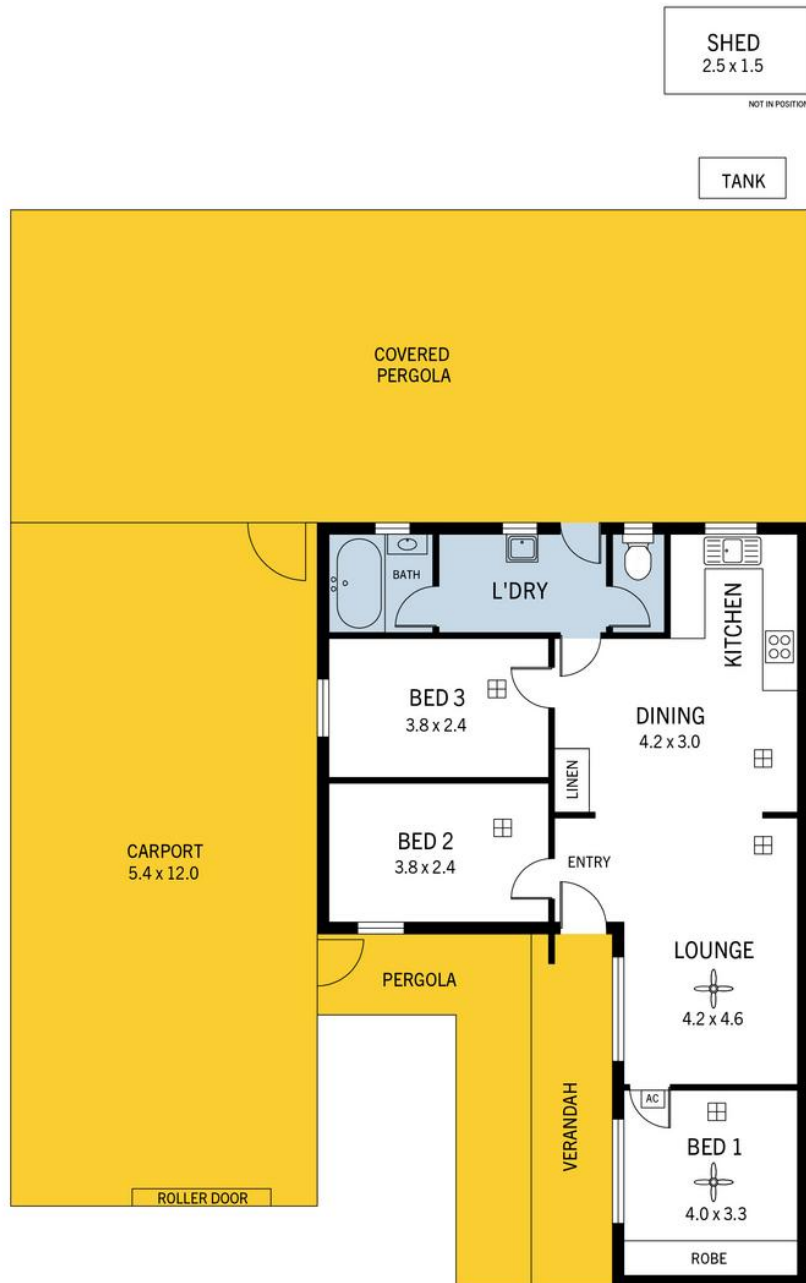
**LJ Hooker Craigmores | Elizabeth | Salisbury (08) 8255 9555**

Shop 17, Craigmores Village, Yorktown Road, CRAIGMORE SA 5114  
[craigmoreselizabeth.ljhooker.com.au](http://craigmoreselizabeth.ljhooker.com.au) | [Office@ljhces.com.au](mailto:Office@ljhces.com.au)



**Disclaimer:** All information contained therein is gathered from relevant third parties sources. We cannot guarantee or give any warranty about the information provided. Interested parties must rely solely on their own enquiries.

**LJ Hooker Craigmores | Elizabeth | Salisbury (08) 8255 9555**



## 29 Knighton Road, Elizabeth North

DISCLAIMER: Floorplan and area calculation are approximate and for illustration purposes only.  
Produced by **Property Portraits**

Interior	73m <sup>2</sup>	<b>233m<sup>2</sup></b> TOTAL
Exterior	94m <sup>2</sup>	
Carport	62m <sup>2</sup>	
Shed	04m <sup>2</sup>	