



10 Ashley Street, Elizabeth North

3 1 3

Add to Your Property Portfolio

James Frencken from LJ Hooker Craigmore | Elizabeth | Salisbury proudly presents this well-located investment opportunity, offering space, functionality and secure tenancy. Set on a generous 836sqm (approx.) allotment, the home provides a practical floor plan and strong appeal for investors seeking long-term security, with future flexibility once the lease concludes.

The property is leased until October 2026, delivering reliable rental income and peace of mind. Outdoors, the expansive rear yard offers excellent usable space, complemented by large powered sheds, a carport, and a rear verandah, ideal for storage, hobbies or entertaining.

Key Features We Love:

- Long-term lease in place until October 2026
- Ducted reverse cycle air conditioning for year-round comfort
- Separate living area offering flexible use
- Two bedrooms with built-in robes
- Large sheds with power
- Carport and rear verandah
- Generous 836sqm allotment (approx.)

Specifications:

- CT: 5285 / 576

FOR SALE
UNDER CONTRACT

AGENTS

James Frencken
0476 871 921
james.frencken@ljhces.com.au

Corey Voss
0412 262 180
corey.voss@ljhces.com.au

AGENCY

LJ Hooker Craigmore | Elizabeth |
Salisbury
(08) 8255 9555

All information contained therein is gathered from relevant third parties sources.
We cannot guarantee or give any warranty about the information provided.
Interested parties must rely solely on their own enquiries.

LJ Hooker

- Council: City of Playford
- Built: 1960
- Land: 836sqm (approx.)
- Easements: NIL
- Rental: \$480 per week (fixed until October 2026)

Well positioned in Elizabeth North, with convenient access to local schools, shops and public transport, and straightforward connectivity toward the Adelaide CBD.

An appealing investment with secure tenancy today and future owner-occupier potential once the lease concludes.

Contact James Frencken on 0476 871 921 to register your interest.

Disclaimer:

We have in preparing this document used our best endeavours to ensure the information contained is true and accurate, but accept no responsibility and disclaim all liability in respect to any errors, omissions, inaccuracies or misstatements contained. Prospective purchasers should make their own enquiries to verify the information contained in this document.

RLA155355

MORE DETAILS

Property ID	683KFDC
Property Type	House
House Size	109 m2
Land Area	836 m2
Including	Workshop
	Fully Fenced

James Frencken 0476 871 921

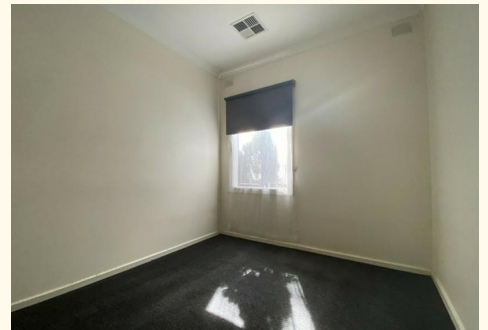
Sales Representative | james.frencken@ljhces.com.au

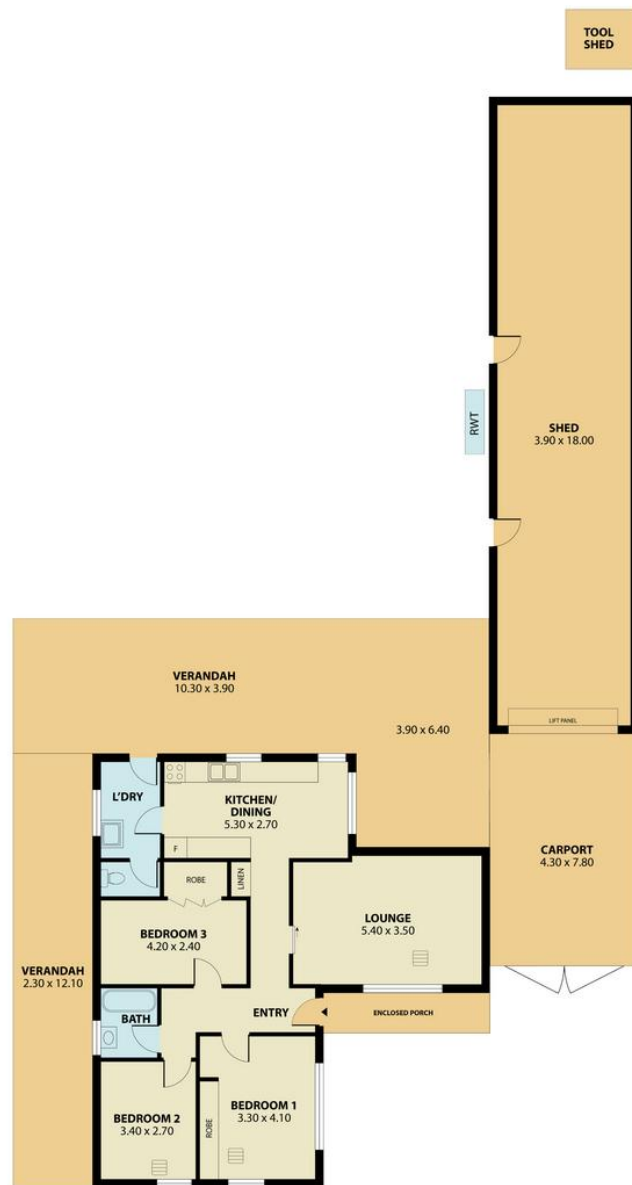
Corey Voss 0412 262 180

Licensee & Senior Sales Representative | corey.voss@ljhces.com.au

LJ Hooker Craigmores | Elizabeth | Salisbury (08) 8255 9555

Shop 17, Craigmores Village, Yorktown Road, CRAIGMORE SA 5114
 craigmoreselizabeth.ljhooker.com.au | Office@ljhces.com.au





10 Ashley Street, Elizabeth North



INTERNAL - 165.3 SQM
 EXTERNAL - 127.0 SQM
 TOTAL - 292.3 SQM

Please Note: Every care has been taken to verify the correctness of the areas and details used in this leaflet. No warranty or representation is given or made as to the correctness of the information supplied and neither the owners, illustrators nor the Agent accept responsibility for errors or omissions. The sketch is for illustration purposes only and intending purchasers should satisfy themselves independently regarding size, layout and location of the property. Please check with local council that all structures are approved by council.