

Elizabeth Grove, 26 Blencowe Street

A Wonderful Starter or Dream Investment!

3 1 1

For Sale
\$449,000 - \$489,000

View
ljhooker.com.au/2B2BGJU

Contact
Shaun Roberts
0435 367 534
shaunr@ljhsales.com.au

- Features include:
- * 3 bedrooms, bedroom 1 and 2 with built-in robes
 - * Front lounge room
 - * Updated kitchen with stainless steel appliances and adjacent meals with v lux skylight
 - * Open plan family and meals
 - * Split system air conditioning units x2



Disclaimer: All information contained therein is gathered from relevant third parties sources. We cannot guarantee or give any warranty about the information provided. Interested parties must rely solely on their own enquiries.

LJ Hooker Greenwith | Golden Grove
| Mawson Lakes | Modbury
(08) 8289 6660

- * 1.5kw Solar panel system saving you \$ on your electricity bills
- * Verandah and shaded paved entertaining area
- * Single carport with ample driveway parking
- * Rain water tanks for watering gardens
- * Rear shed/workshop

With easy access to Main North Road for those commuting to the Adelaide CBD, also just moments to nearby Lyell McEwen Hospital and Elizabeth City Centre and shops. A super convenient location, and a home that is sure to appeal to many!

Enquire today.

All information provided has been obtained from sources we believe to be accurate, however, we cannot guarantee the information is accurate and we accept no liability for any errors or omissions (including but not limited to a property's land size, floor plans and size, building age and condition). Interested parties should make their own enquiries and obtain their own legal and financial advice. Should this property be scheduled for auction, the Vendor's Statement may be inspected at either of our two LJ Hooker Property Specialists Real Estate offices for 3 consecutive business days immediately preceding the auction and at the auction for 30 minutes before it starts.

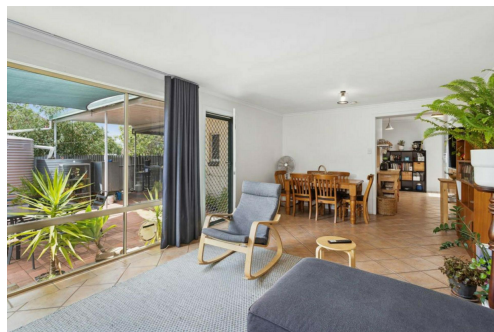
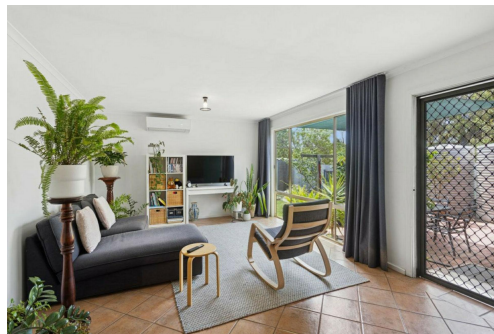
RLA 208516

More About this Property

Property ID	2B2BGJU
Property Type	House
House Size	86 m²
Land Area	555 m²
Including	Air Conditioning Built-in-Robes Secure Parking Fully Fenced Solar Panels

Shaun Roberts 0435 367 534
Managing Partner | Sales Specialist | shaunr@ljhsales.com.au

LJ Hooker Greenwith | Golden Grove | Mawson Lakes | Modbury (08) 8289 6660
North East, Shop 2, 1007 North East Road, RIDGEHAVEN SA 5097
greenwithgoldengrove.ljhooker.com.au | info@ljhsupport.com.au



Disclaimer: All information contained therein is gathered from relevant third parties sources. We cannot guarantee or give any warranty about the information provided. Interested parties must rely solely on their own enquiries.

**LJ Hooker Greenwith | Golden Grove
| Mawson Lakes | Modbury
(08) 8289 6660**



BLENCOWE STREET

SITE PLAN
(NOT TO SCALE)

Scale in metres. This drawing is for illustration purposes only. All measurements are approximate and details intended to be relied upon should be independently verified. Produced by The Fotobase Group