



LJ Hooker



LJ Hooker



LJ Hooker



LJ Hooker

Elizabeth East, 89 Halsey Road

Auction Cancelled - Contact Darren Hutton



For Sale
Contact Agent

View
ljhooker.com.au/1UZCG54

Contact
Darren Hutton
0408 086 249
darrenh@ljhsales.com.au

Welcome to 89 Halsey Road, Elizabeth East.

This original 1960s-built home has been recently updated with fresh paint, new flooring and carpet throughout, while being set on a generous 918sqm approx. block and featuring a wide 20.12-meter approx. frontage.

With no easements and a wide 20.12-meter approx. frontage, there is plenty of opportunity for a potential subdivision into 2 or 3 dwellings, subject to council approval.

Features include:

- * 3 comfortable bedrooms.
- * One centrally located bathroom with a separate toilet off the laundry.
- * Formal lounge room with split system heating and cooling.



LJ Hooker Gawler | Barossa
(08) 8522 3311

Disclaimer: All information contained therein is gathered from relevant third parties sources. We cannot guarantee or give any warranty about the information provided. Interested parties must rely solely on their own enquiries.

- * Freshly painted interior, exterior and roof.
- * New flooring throughout living areas.
- * New carpets in all bedrooms.
- * Freshly laid lawn and landscaped front yard.
- * Tidy kitchen and meals area.
- * Full-length rear verandah, perfect for entertaining.
- * Undercover carport accommodating 2 cars.
- * Backyard offers a blank canvas for your personal touch.
- * Shedding for additional storage or workshop space.

Close to Elizabeth Shopping Centre, easy access to local public transport and convenient access to Main North Road and Adelaide CBD. This property is ideal for first-home buyers, savvy investors, or those looking for development potential (STCC).

For further enquiries, please contact Darren Hutton on 0408 086 249.

Built - 1960

CT - 5581/12

House - 101m2 (approx.)

Land - 918m2 (approx.)

Frontage —20.12 m (approx.)

Zoned - GN - General Neighbourhood

Council - PLAYFORD Rates - \$1,773.06 pa

Hot Water —Electric

NBN - Available

Easements —Nil

All information provided has been obtained from sources we believe to be accurate, however, we cannot guarantee the information is accurate and we accept no liability for any errors or omissions (including but not limited to a property's land size, floor plans and size, building age and condition). Interested parties should make their own enquiries and obtain their own legal and financial advice. Should this property be scheduled for auction, the Vendor's Statement may be inspected at either of our two LJ Hooker Property Specialists Real Estate offices for 3 consecutive business days immediately preceding the auction and at the auction for 30 minutes before it starts. RLA 305453



LJ Hooker Gawler | Barossa
(08) 8522 3311

Disclaimer: All information contained therein is gathered from relevant third parties sources. We cannot guarantee or give any warranty about the information provided. Interested parties must rely solely on their own enquiries.

More About this Property

Property ID	1UZCG54
Property Type	House
House Size	101 m ²
Land Area	918 m ²
Including	Air Conditioning Built-in-Robes Secure Parking

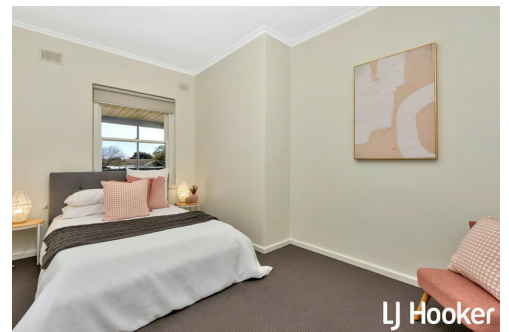
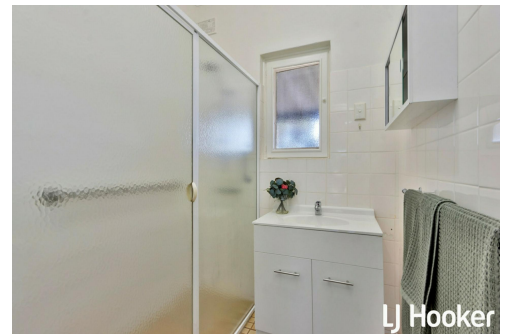
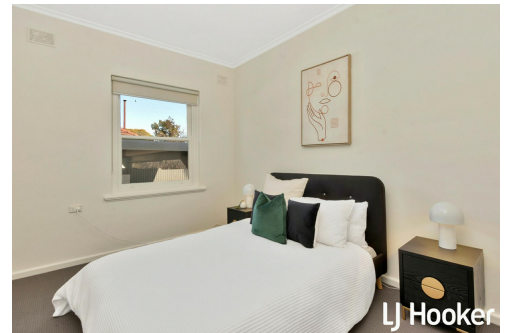
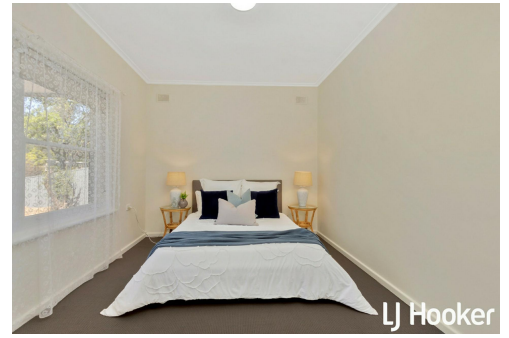
Darren Hutton 0408 086 249

Sales Specialist | darrenh@ljhsales.com.au

LJ Hooker Gawler | Barossa (08) 8522 3311

26 Adelaide Road, GAWLER SA 5118

gawlerbarossa.ljhooker.com.au | gawler@ljhsupport.com.au



Disclaimer: All information contained therein is gathered from relevant third parties sources. We cannot guarantee or give any warranty about the information provided. Interested parties must rely solely on their own enquiries.

**LJ Hooker Gawler | Barossa
(08) 8522 3311**

89 Halsey Road,
ELIZABETH EAST



Living:	101.83SQ.M
Porch/Verandah:	55.97SQ.M
Carport:	31.16SQ.M
Garden Shed:	33.49SQ.M

TOTAL: 222.45SQ.M

This Drawing is for illustration purposes only. All measurements are internal and approximate. Details intended to be relied upon should be independently verified.