



## Elizabeth East, 41 Fuller Crescent

### A Fantastic Family Home Or A Perfect Investment



Introducing a fantastic real estate opportunity in Elizabeth East, presented by Andrew Rose of LJ Hooker. This charming property boasts all the features that make a house a home.

Step inside to discover three generously sized bedrooms, providing comfortable living spaces for your family. All Bedrooms are equipped with built in robes for your storage needs.

The heart of this home is the spacious kitchen, complete with stainless steel appliances and a convenient gas cooktop. It's the perfect place to cook up delicious meals for your loved ones. The design seamlessly connects to the separate lounge and dining areas, creating an inviting space where the whole family can gather and create lasting memories. There's a well-appointed central bathroom that ensures convenience for everyone.

Situated on an expansive 682 square metre block (approx), this property offers an



**Disclaimer:** All information contained therein is gathered from relevant third parties sources. We cannot guarantee or give any warranty about the information provided. Interested parties must rely solely on their own enquiries.

**For Sale**  
UNDER CONTRACT BY ANDREW ROSE

**View**  
[ljhooker.com.au/6679FDC](http://ljhooker.com.au/6679FDC)

**Contact**  
**Andrew Rose**  
0421 988 597  
[andrew.rose@ljhces.com.au](mailto:andrew.rose@ljhces.com.au)

**LJ Hooker Craigmore | Elizabeth | Salisbury**  
**(08) 8255 9555**

abundance of outdoor possibilities. The large yard provides ample space for a variety of activities and offers room for kids to play, pets to roam, and a garden to flourish. Additionally, there's plenty of parking space for all your family vehicles, and a substantial garage to house the extra car, boat or bike you may have.

#### Stand out Features

- Heating and Cooling for year round comfort
- Ample Parking Space
- Large 682sqm block (approx.)
- Large Kitchen

#### Specifications:

CT / 5343/228

Council / Playford

Built / 1978

Land / 682m2 (approx)

Estimated rental assessment / \$510 - \$530 per week

Located just a stone's throw from Freemont Park and in close proximity to the Elizabeth City Shopping Precinct, ideally located providing easy access north and south, close to schools, public transport, local shops including 4-5 min drive to the Elizabeth City Shopping Centre, restaurants, schools, TAFE college, bus routes, train station, and much more, this is an opportunity not to be missed!

Don't miss out on the splendid opportunities this property has to offer.

Contact Andrew Rose of LJ Hooker today to arrange a viewing and make this wonderful house your home. Embrace the spacious living, extensive outdoor space, and convenient amenities that this property has in store for you. Your dream lifestyle awaits in Elizabeth East!

#### Disclaimer:

We have in preparing this document used our best endeavours to ensure the information contained is true and accurate, but accept no responsibility and disclaim all liability in respect to any errors, omissions, inaccuracies or misstatements contained. Prospective purchasers should make their own enquiries to verify the information contained in this document.

RLA155355

## More About this Property

<b>Property ID</b>	6679FDC
<b>Property Type</b>	House
<b>Land Area</b>	682 m <sup>2</sup>

#### Andrew Rose 0421 988 597

Senior Sales Representative | [andrew.rose@ljhces.com.au](mailto:andrew.rose@ljhces.com.au)

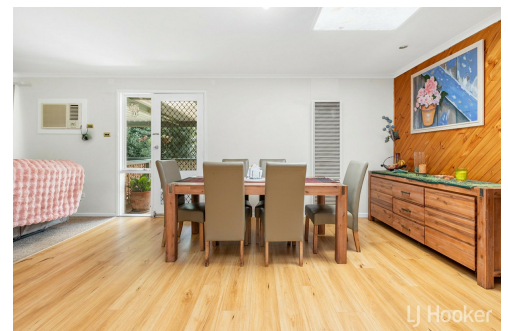
#### LJ Hooker Craigmores | Elizabeth | Salisbury (08) 8255 9555

Shop 17, Craigmores Village, Yorktown Road, CRAIGMORE SA 5114  
[craigmoreselizabeth.ljhooker.com.au](http://craigmoreselizabeth.ljhooker.com.au) | [Office@ljhces.com.au](mailto:Office@ljhces.com.au)

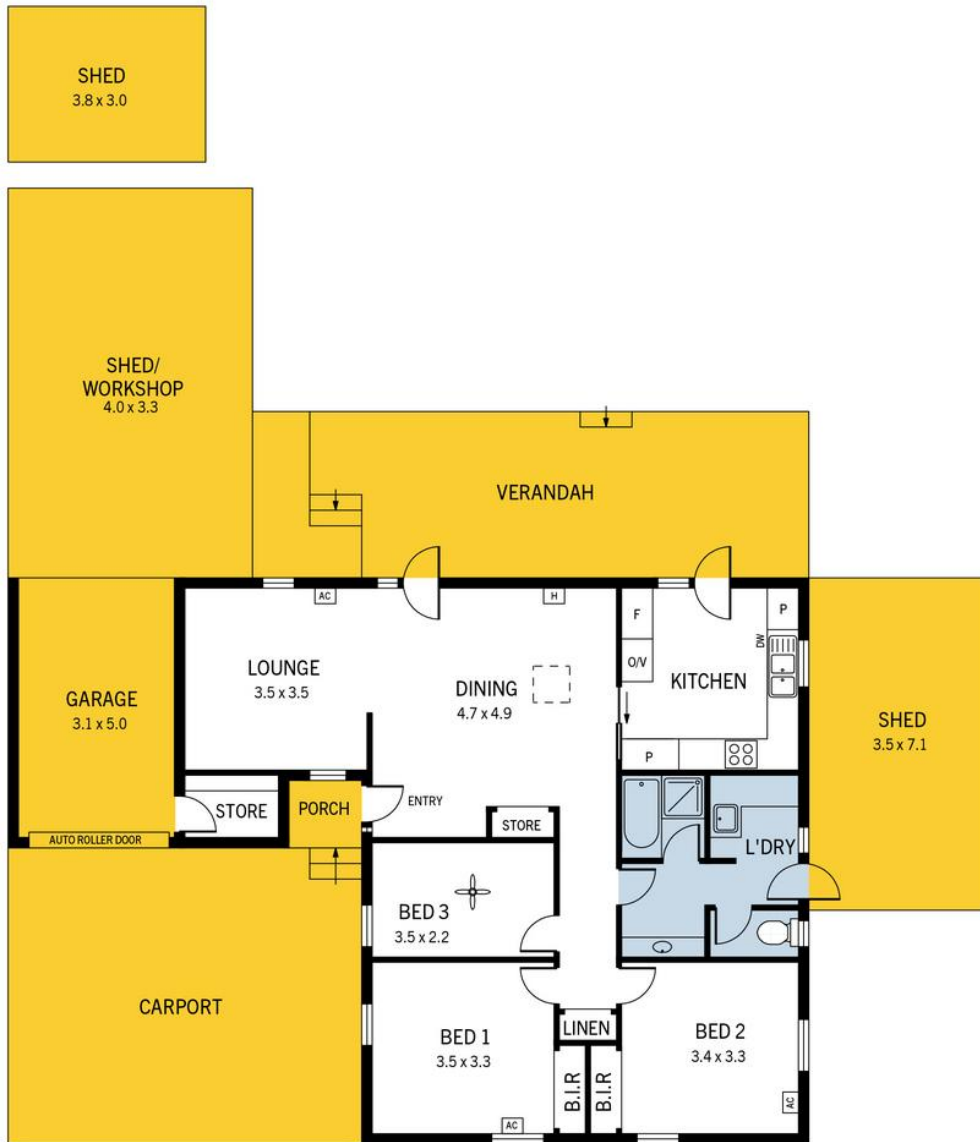


**Disclaimer:** All information contained therein is gathered from relevant third parties sources.

We cannot guarantee or give any warranty about the information provided. Interested parties must rely solely on their own enquiries.



**LJ Hooker Craigmores | Elizabeth |  
Salisbury  
(08) 8255 9555**



## 41 Fuller Crescent, Elizabeth East

DISCLAIMER: Floorplan and area calculation are approximate and for illustration purposes only.  
Produced by Property Portraits

Interior	101m <sup>2</sup>	<b>254m<sup>2</sup></b> TOTAL
Exterior	32m <sup>2</sup>	
Shed	33m <sup>2</sup>	
Garage	15m <sup>2</sup>	
Carport	38m <sup>2</sup>	
Workshop	35m <sup>2</sup>	