

Elizabeth East, 10 Phelps Street

Spacious Family Living with Endless Potential

Welcome to 10 Phelps Street, Elizabeth East, a delightful family residence set on a spacious 676sqm block (approx). Presented by Hayden More and LJ Hooker, this property combines comfortable living, great investment potential, and a highly sought-after location with a wide 19.9m frontage.

As you step inside, you'll be greeted by a bright and welcoming front lounge, the perfect space to relax with family. This room is serviced by a split system air conditioner, ensuring comfort throughout the year, no matter the season.

The home features three generously sized bedrooms, each fitted with built-in robes, offering ample storage and space for every member of the family. These large bedrooms make this home ideal for growing families, providing room to relax and unwind in privacy.

The kitchen and dining area form the heart of the home, featuring a practical layout that's



Disclaimer: All information contained therein is gathered from relevant third parties sources. We cannot guarantee or give any warranty about the information provided. Interested parties must rely solely on their own enquiries.



For Sale
UNDER CONTRACT BY HAYDEN MORE

View
ljhooker.com.au/665SFDC

Contact
Hayden More
0448 762 846
hayden.more@ljhces.com.au

**LJ Hooker Craigmore | Elizabeth |
Salisbury**
(08) 8255 9555

perfect for both daily meals and special gatherings. Equipped with a 4-burner electric cooktop and oven, and boasting ample cupboard space, this area is designed to meet the needs of a busy household while offering the opportunity for casual family dinners or more formal entertaining.

Step outside to find a large veranda that provides a versatile space for year-round outdoor enjoyment. Whether you envision weekend barbecues, a play area for the kids, or simply a quiet spot to enjoy your morning coffee, this open space offers endless possibilities. The large backyard further enhances the potential for outdoor living, with plenty of room for pets, children, or even future extensions.

With its well-maintained interior and expansive outdoor area, 10 Phelps Street offers plenty of opportunities for customisation, whether you're looking to move straight in, renovate, or invest. Located in the heart of Elizabeth East, the home is close to local schools, parks, shops, and public transport, providing the perfect balance of suburban tranquillity and everyday convenience.

Disclaimer:

We have in preparing this document used our best endeavours to ensure the information contained is true and accurate, but accept no responsibility and disclaim all liability in respect to any errors, omissions, inaccuracies or misstatements contained. Prospective purchasers should make their own enquiries to verify the information contained in this document.

RLA155355

More About this Property

Property ID	665SFDC
Property Type	House
House Size	103 m ²
Land Area	676 m ²

Hayden More 0448 762 846

Sales Representative | hayden.more@ljhces.com.au

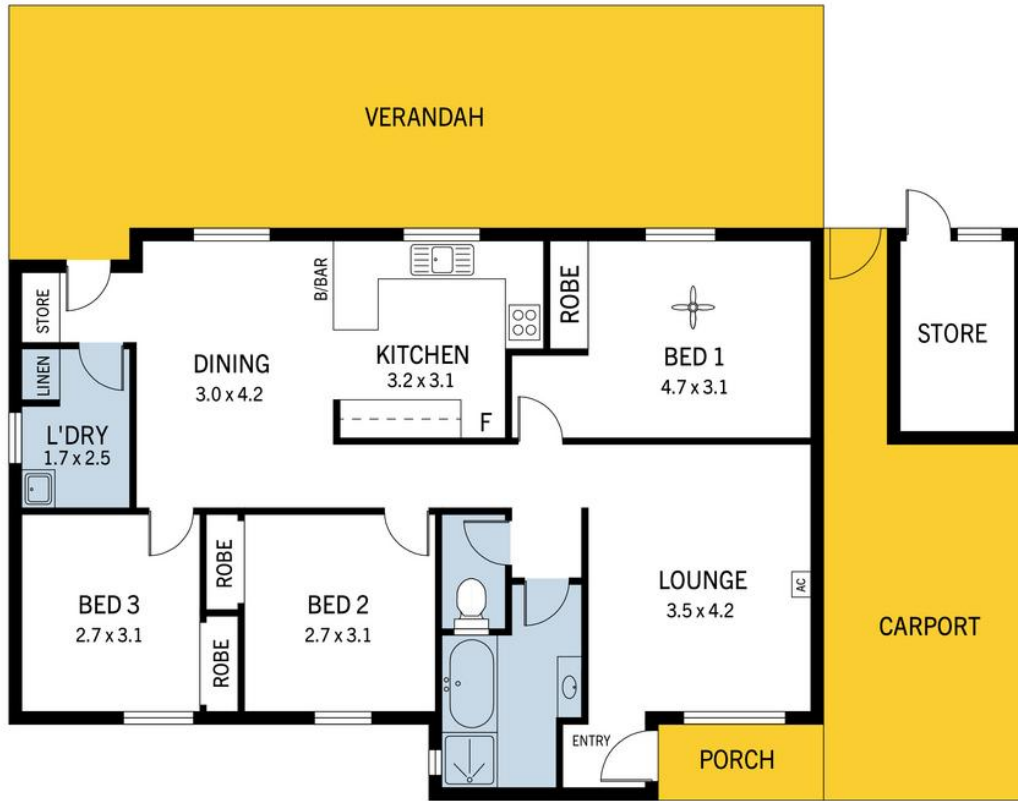
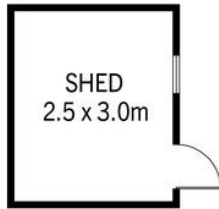
LJ Hooker Craigmores | Elizabeth | Salisbury (08) 8255 9555

Shop 17, Craigmores Village, Yorktown Road, CRAIGMORE SA 5114
craigmoreselizabeth.ljhooker.com.au | Office@ljhces.com.au



Disclaimer: All information contained therein is gathered from relevant third parties sources. We cannot guarantee or give any warranty about the information provided. Interested parties must rely solely on their own enquiries.

LJ Hooker Craigmores | Elizabeth | Salisbury (08) 8255 9555



10 Phelps Street, Elizabeth East

DISCLAIMER: Floorplan and area calculation are approximate and for illustration purposes only.
Produced by **Property Portraits**

Interior	95m ²
Verandah	46m ²
Porch	04m ²
Shed	07m ²
Carport	18m ²

170m²
TOTAL