

## Elizabeth Bay, 111/9 Greenknowe Avenue

Charming Urban Retreat in Elizabeth Bay



**For Sale**  
Sold by Darran Wyatt

**View**  
[ljhooker.com.au/26CHYY](http://ljhooker.com.au/26CHYY)

**Contact**  
**Darran Wyatt**  
0407 440 947  
[darran@ljhdoublbay.com](mailto:darran@ljhdoublbay.com)

Discover the perfect blend of comfort and convenience in this delightful one-bedroom apartment located in the heart of Elizabeth Bay. The quaint apartment is a testament to efficient design and modern living, offering a cozy sanctuary in a vibrant urban setting. Step inside to find a versatile layout ideal for relaxation and entertainment all complimented by a designated work from home space. 'The Lorne' is close to all the lifestyle amenities that the area has to offer. Cafes, Restaurants, Shopping and the famous Saturday Markets create a lifestyle you won't find anywhere else in Sydney.

Features include:

- Open plan living with additional study or dining space
- Functional kitchen with modern appliances and ample cupboard space
- Large modern bathroom with bath and separate internal laundry
- Spacious bedroom with built in wardrobe
- Footsteps to the local cafe culture, restaurants and wine bars.

# LJ Hooker

**Disclaimer:** All information contained therein is gathered from relevant third parties sources. We cannot guarantee or give any warranty about the information provided. Interested parties must rely solely on their own enquiries.

**LJ Hooker Double Bay**  
**(02) 9185 2816**

- Conveniently located, footsteps to bus stop & train station.
- Walking distance to Elizabeth Bay Marina & Rushcutters Bay.

## More About this Property

<b>Property ID</b>	26CHYY
<b>Property Type</b>	Apartment
<b>Land Area</b>	38 m2

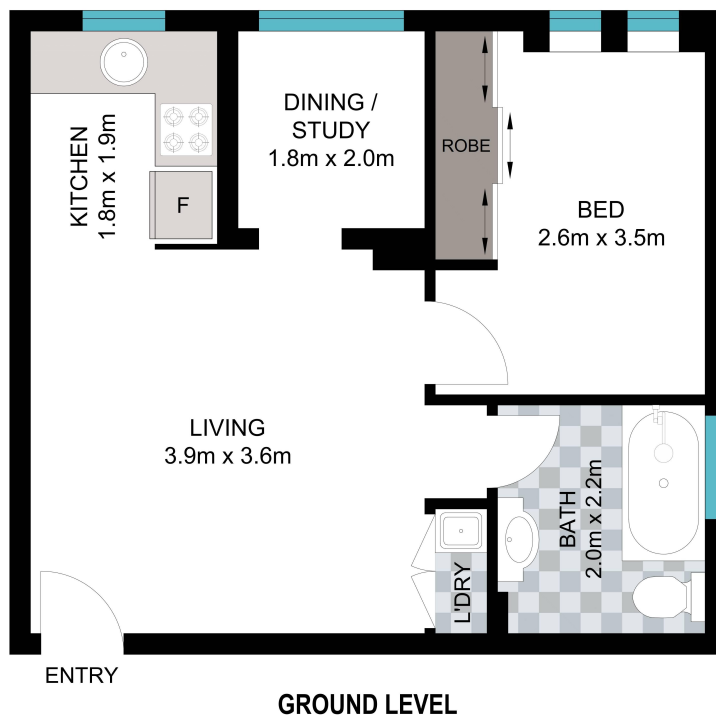
**Darran Wyatt 0407 440 947**

Associate Director - Wyatt Property Group Pty Ltd | [darran@ljhdoublebay.com](mailto:darran@ljhdoublebay.com)

**LJ Hooker Double Bay (02) 9185 2816**

38 Ocean Street, WOOLLAHRA NSW 2025  
[doublebay.ljhooker.com.au](http://doublebay.ljhooker.com.au) | [admin@ljhdoublebay.com](mailto:admin@ljhdoublebay.com)





Scale in metres. Indicative only. Dimensions are approximate. All information contained herein is gathered from sources we believe to be reliable. However we cannot guarantee its accuracy and interested persons should rely on their own enquiries.

111/9 Greenknowe Avenue, Elizabeth Bay