






5 Libra Close, Elmore Vale

3  1  2 

Move Fast - A Home This Good Doesn't Last!

- Complimentary Pest & Building Report available

Tucked into a quiet, well-loved pocket of Elmore Vale, 5 Libra Close delivers a warm and welcoming opportunity in one of Newcastle's most consistently sought-after suburbs. Set on a generous block with excellent access and a lovely elevated outlook, it's the kind of home that suits first-timers, investors, and anyone chasing an easy, comfortable lifestyle where a central location has you positioned only moments from all the action.

On entry you're greeted by polished timber floors that add instant charm, with the classic L shaped living space positioned at the front of the home, that leads through to a stylish galley kitchen & dining- a practical, well-designed space that takes in the deck and the leafy district views beyond. From here the area opens beautifully to the outdoor entertaining deck, creating a sweet retreat to unwind after a long day, with the vista doing half the relaxing for you. Three bedrooms cover off on the sleeping arrangements, and sit comfortably around the neat central bathroom.

Outside, the secure yard offers great space for kids, pets or a bit of

FOR SALE
\$850,000

AGENTS

Ben Cotton
0434 638 822
bcotton.maitland@ljhooker.com.au

AGENCY

LJ Hooker Maitland
(02) 4933 5511

All information contained therein is gathered from relevant third parties sources.
We cannot guarantee or give any warranty about the information provided.
Interested parties must rely solely on their own enquiries.

 **LJ Hooker**

weekend pottering around the established gardens, and the standout side access to the detached double garage is a real win for trades, tinkerers or those with extra toys.

The Features:

- Brick & tile construction.
- Timber flooring & carpet
- Three bedrooms, all with built-in robes
- Neat central bathroom
- Stylish galley kitchen overlooking the deck and the view
- Excellent side access to detached double garage
- Generous 702sqm block with a secure backyard

The Location:

- Moments to Elernmore Vale Shopping Centre
- 5 minutes to Wallsend Village
- 8 minutes to John Hunter Hospital
- Zoned for quality local schools
- Easy access to Newcastle Link Road and the Pacific Motorway

Whether you're looking to move straight in, update over time, or add to a smart investment portfolio, 5 Libra Close offers an inviting blend of comfort, potential and lifestyle appeal in a suburb that continues to shine. With its elevated outlook, excellent access, and a layout that makes everyday living feel easy, this is a property that rewards now and well into the future.

For Sale NOW or at Public Auction 13th December, please contact exclusive selling agent Ben Cotton 0434 638 822 - 7 days for all inspections & further information.

All information contained herein is gathered from sources we deem to be reliable. However, we cannot guarantee its accuracy and interested persons should rely on their own enquiries.

MORE DETAILS

Property ID	1EQ0F6H
Property Type	House
Land Area	702 m2
Including	Air Conditioning Toilets (1) Built-in-Robes Area Views Close to Schools Close to Shops Close to Transport

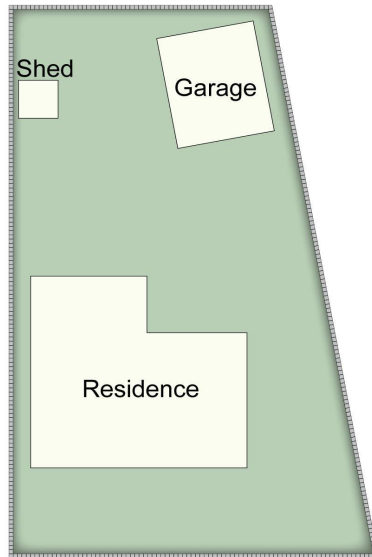
Ben Cotton 0434 638 822

Licensed Real Estate Agent & Auctioneer |
bcotton.maitland@ljhooker.com.au

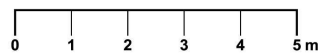
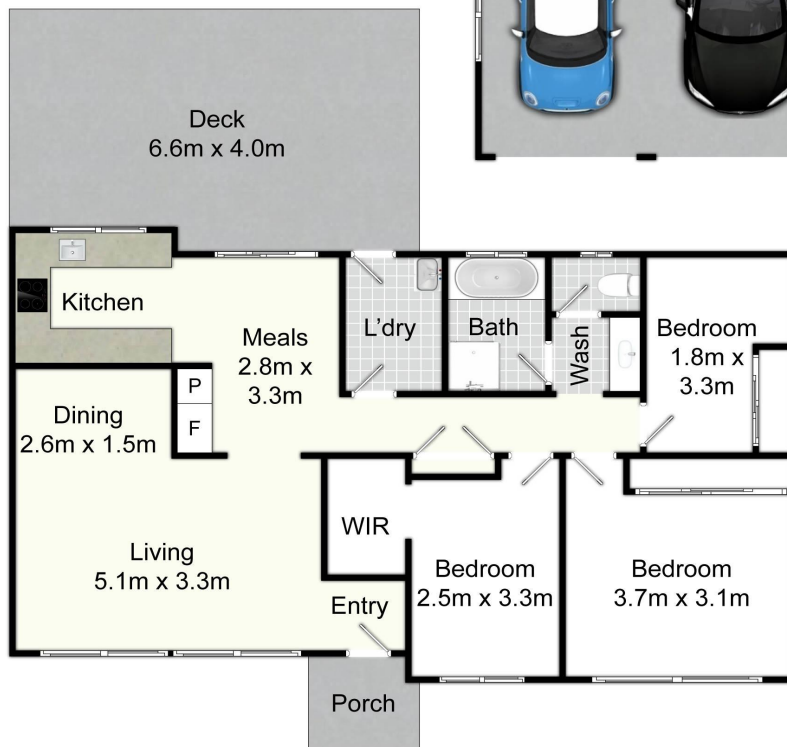
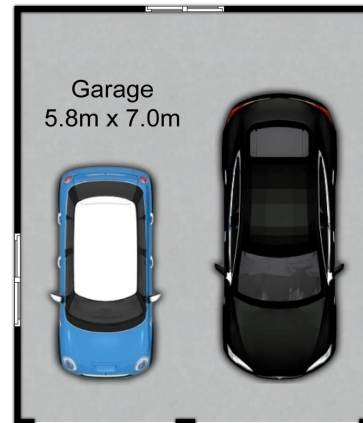
LJ Hooker Maitland (02) 4933 5511

24 Ken Tubman Drive, MAITLAND NSW 2320
maitland.ljhooker.com.au | maitland@ljhooker.com.au





Site Plan
(Not to Scale)



5 Libra Ct, Elmore Vale

All information contained herein is gathered from sources we deem reliable. However, we cannot guarantee its accuracy and act as a messenger only in passing on the details. Interested parties should rely on their own inquiries and the contract for sale. The floor plans are artist's impressions only. The site plan is not to scale.



All information contained therein is gathered from relevant third parties sources. We cannot guarantee or give any warranty about the information provided. Interested parties must rely solely on their own enquiries.

