

Elanora, 24/31 Simpsons Road

Immaculate Townhouse Renovation in a Bush Land Setting!

Location, lifestyle and low-maintenance living, this townhouse has been completely and tastefully renovated throughout!

Part of the 'Oceanwood' Estate, this two-level home greets you with spacious open living and dining zones enhanced by hybrid flooring and a modern kitchen with stone bench tops. The balcony overlooks the bush land offering peace and tranquility where wallabies and koalas often visit.

There are two large master bedrooms one upstairs and the other on the second level. Both offering walk in robes and bathroom access.

Downstairs you will enjoy the separation of bedroom 2 and 3, both include ceiling fans, while bedroom 2 has a walk in robe, while bedroom 3 has access to another outdoor



For Sale
Please Call

View
ljhooker.com.au/1UT8F47

Contact
Jo Elwin
0409 429 785
jo@ljhookerpb.com.au

LJ Hooker

Disclaimer: All information contained therein is gathered from relevant third parties sources. We cannot guarantee or give any warranty about the information provided. Interested parties must rely solely on their own enquiries.

LJ Hooker Southern Gold Coast
(07) 5534 4033

balcony.

Upstairs Features:

- Modern kitchen with stone bench top, breakfast bar, new electric stove and oven and soft close cabinetry
- Laundry —functional with easy access from the kitchen for convenience
- Dining and lounge which opens to a private balcony with tree views
- Master suite, generous in size with walk in robe and access to the bathroom
- Stylish bathroom with 'Jack and Jill' entry, floor to ceiling tiling, large shower with built in niche and elegant vanity with an elegant mirror with lighting.
- Split system heating and cooling

Downstairs features:

- New bathroom with chic finishes including 'Jack and Jill' entry, floor to ceiling tiling, large shower with built in niche and elegant vanity with an elegant mirror with lighting.
- Bedroom 2, generous in size with walk in robe and ceiling fan and bathroom access
- Bedroom 3 with access to lower balcony and a secret door leading to down stairs storage
- Balcony with stair access to small fenced yard suitable for pets.

Complex features:

- Inground pool
- Full size tennis court
- BBQ Facilities

- Rental appraisal approximately \$820 - \$850 pw

Easy Access to M1, The Pines Shopping Centre, 19th Ave Shopping, beautiful southern beaches and more.

Contact Jo Elwin on 0409 429 785.

Disclaimer:

All information (including but not limited to the property area, floor size, price, address and general property description) is provided as a convenience to you, and has been provided to LJ Hooker by third parties. LJ Hooker is unable to definitively confirm whether the information listed is correct or 100% accurate. LJ Hooker does not accept any liability (direct or indirect) for any injury, loss, claim, damage or any incidental or consequential damages, including but not limited to lost profits or savings, arising out of or in any way connected with the use of any information, or any error, omission or defect in the information, contained on the Website. Information contained on the Website should not be relied upon and you should make your own enquiries and seek legal advice in respect of any property on the Website. Prices displayed on the Website are current at the time of issue, but may change.

More About this Property

Property ID	1UT8F47
Property Type	Townhouse
House Size	144 m2
Including	Air Conditioning Courtyard Dishwasher Outdoor Entertaining Secure Parking

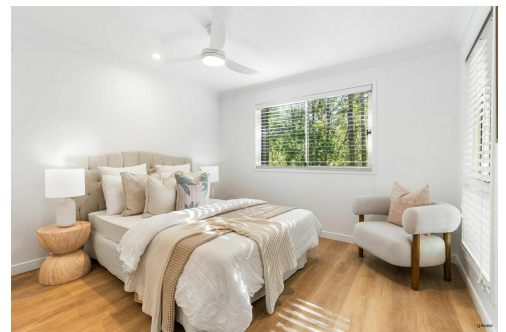
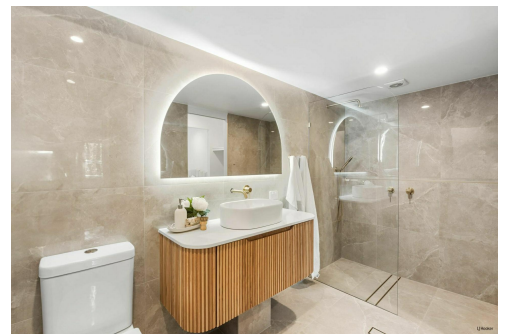
Jo Elwin 0409 429 785

Sales & Marketing Specialist | jo@ljhookerpb.com.au

LJ Hooker Southern Gold Coast (07) 5534 4033

Shop 2, 10 Fifth Avenue, PALM BEACH QLD 4221

southerngoldcoast.ljhooker.com.au | enquiries@ljhookersgc.com.au



LJ Hooker

Disclaimer: All information contained therein is gathered from relevant third parties sources. We cannot guarantee or give any warranty about the information provided. Interested parties must rely solely on their own enquiries.

**LJ Hooker Southern Gold Coast
(07) 5534 4033**



This floor plan is a detailed representation created to enhance your understanding of the property's potential. While we strive for accuracy, dimensions are approximate and should be verified for complete assurance.



Ground Floor Plan
Access Road to Simpsons Road

Lower Level Floor Plan