

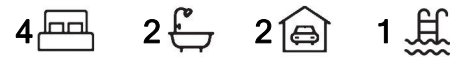
Elanora, 21 Heartwood Avenue

Elevated Family Renovator in Quiet Street - Minutes to everything

Positioned perfectly in a prime family-friendly street of Elanora, this solid brick abode is ideal for families looking to make the ultimate lifestyle change.

Offering endless opportunities and situated in a convenient location of Elanora, this single level home is ripe for renovation and has massive potential and upside for anyone with vision.

Your private, low maintenance family home has endless natural light, year-round breezes and is situated on a large elevated 946m2 block. This private pocket of Elanora is a stone's throw from Palm Beach and is one of the best kept secrets on the southern Gold Coast. The interior flows effortlessly and opens out to your large inground swimming pool perfect for the summer months.



For Sale
Contact Agent

View
By Appointment

Contact
David Lonie
0432 349 839
david@ljhookersgc.com.au

LJ Hooker

Disclaimer: All information contained therein is gathered from relevant third parties sources. We cannot guarantee or give any warranty about the information provided. Interested parties must rely solely on their own enquiries.

LJ Hooker Southern Gold Coast
(07) 5534 4033

Your new home is in arguably the best pocket of Elanora, this quiet location is only minutes to the Southern Gold Coast's finest beaches. This home is the epitome of what relaxed Gold Coast living is all about.

On offer:

- 4 bedrooms, 2 bathrooms with a double carport
- Master bedroom offers generous ensuite
- Large open plan kitchen, dining and lounge area
- Elevated 946m2 block with large inground pool
- Endless possibilities & plenty of room to add value with a renovation over time
- A short bike ride to Elanora primary school, the pines shopping center and pine lake
- Walk to the end of your street to catch yourself dinner, paddle board or launch your sail boat
- 10 minutes to the Gold Coast International Airport
- 1 hour to both Brisbane & Byron Bay (approx.)

Elanora and Palm Beach are gated by two pristine, still water estuaries and iconic headlands with Burleigh to the north and Currumbin to the south. The beautiful valleys and rock pools of Currumbin and Tallebudgera Valley behind, offer the best of both worlds.

Properties like this one are hard to come by so waste no time in arranging a viewing today.

Disclaimer:

All information (including but not limited to the property area, floor size, price, address and general property description) is provided as a convenience to you, and has been provided to LJ Hooker by third parties. LJ Hooker is unable to definitively confirm whether the information listed is correct or 100% accurate. LJ Hooker does not accept any liability (direct or indirect) for any injury, loss, claim, damage or any incidental or consequential damages, including but not limited to lost profits or savings, arising out of or in any way connected with the use of any information, or any error, omission or defect in the information, contained on the Website. Information contained on the Website should not be relied upon and you should make your own enquiries and seek legal advice in respect of any property on the Website. Prices displayed on the Website are current at the time of issue, but may change.

More About this Property

Property ID	1TWEF47
Property Type	House
Land Area	946 m ²
Including	Pool Secure Parking Liveability

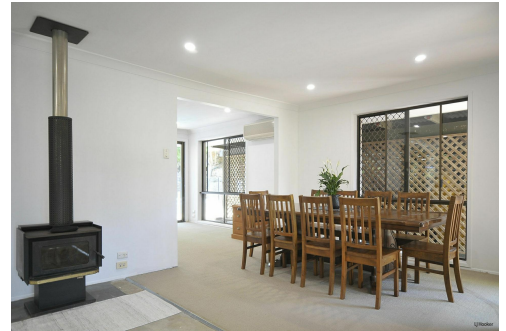
David Lonie 0432 349 839

Sales & Marketing Specialist | david@ljhookersgc.com.au

LJ Hooker Southern Gold Coast (07) 5534 4033

Shop 2, 10 Fifth Avenue, PALM BEACH QLD 4221

southerngoldcoast.ljhooker.com.au | enquiries@ljhookersgc.com.au



LJ Hooker

Disclaimer: All information contained therein is gathered from relevant third parties sources. We cannot guarantee or give any warranty about the information provided. Interested parties must rely solely on their own enquiries.

**LJ Hooker Southern Gold Coast
(07) 5534 4033**