

14 Kalmia Court, Elanora

SOLD BY LEE-ANNE KLAUS

Tucked away in a peaceful cul-de-sac, 14 Kalmia Court is a beautifully maintained high-set home designed to capture cooling summer breezes and a serene outlook towards the Tallebudgera Estuary. With a versatile dual-level layout, this home is ideal for families seeking space, privacy, and flexibility.

Upstairs, the light-filled open plan living and dining area flows seamlessly onto a generous covered timber entertaining deck-perfect for relaxing or hosting friends. The well-appointed kitchen features gas cooking and stainless steel appliances, while two spacious bedrooms include a master with ensuite.

Downstairs offers excellent separation with a fully tiled living zone, third bedroom with ensuite, and private access. This level is perfect as a teenage retreat, guest accommodation, home office, or potential dual-living arrangement to generate additional income.

Located in a highly sought-after pocket, the home is just moments from local shops, parks, schools, and the estuary, with some of the Gold Coast's best beaches, cafés, and restaurants nearby. For coastal lovers, Palm Beach is only a short drive away, offering pristine sands, popular surf breaks, beachfront cafés, and a relaxed seaside lifestyle.

3 3 1

FOR SALE
Offers over \$1,250,000

AGENTS
Lee-Anne Klaus
0413 435 577
lee-anne@ljhookersgc.com.au

AGENCY
LJ Hooker Southern Gold Coast
(07) 5534 4033

All information contained therein is gathered from relevant third parties sources. We cannot guarantee or give any warranty about the information provided. Interested parties must rely solely on their own enquiries.



Property Features:

- Quiet cul-de-sac location with estuary outlook
- Light-filled open plan living upstairs
- Large covered timber entertaining deck
- Two generous upstairs bedrooms, master with ensuite
- Main bathroom with separate toilet and two-way access laundry
- Third bedroom with ensuite downstairs
- Separate downstairs living area with private entry-ideal for dual living or teenage retreat
- Functional kitchen with gas cooktop and stainless steel appliances
- Air-conditioning, ceiling fans, timber floors and timber blinds
- Fully fenced usable backyard-perfect for children and pets
- Lock-up garage plus additional off-street parking with shade sails
- Low maintenance

Location:

- Approx. 7 min drive to Palm Beach
- Approx. 15 mins to Coolangatta Beach
- Approx. 15 mins to Gold Coast Airport
- Approx. 12 mins to John Flynn Private Hospital
- Approx. 4 mins to The Pines Shopping Centre
- Walk or short drive to local Elanora schools

Call Lee-Anne Klaus today on 0413 435 577 to arrange your inspection.

Disclaimer:

All information (including but not limited to the property area, floor size, price, address and general property description) is provided as a convenience to you, and has been provided to LJ Hooker by third parties. LJ Hooker is unable to definitively confirm whether the information listed is correct or 100% accurate. LJ Hooker does not accept any liability (direct or indirect) for any injury, loss, claim, damage or any incidental or consequential damages, including but not limited to lost profits or savings, arising out of or in any way connected with the use of any information, or any error, omission or defect in the information, contained on the Website. Information contained on the Website should not be relied upon and you should make your own enquiries and seek legal advice in respect of any property on the Website. Prices displayed on the Website are current at the time of issue, but may change.

MORE DETAILS

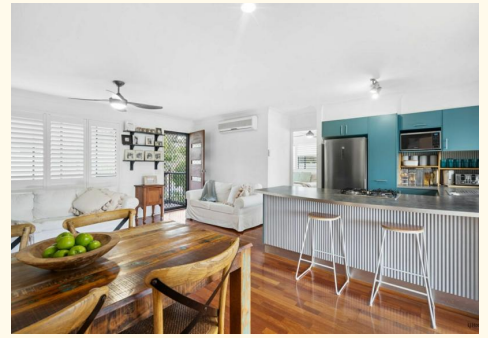
Property ID 1WDUF47
Property Type House
Land Area 419 m2
Including Ensuite
Toilets (3)
Deck
Dishwasher
Outdoor Entertaining
Floorboards
Built-in-Robes
Fully Fenced
Liveability

Lee-Anne Klaus 0413 435 577

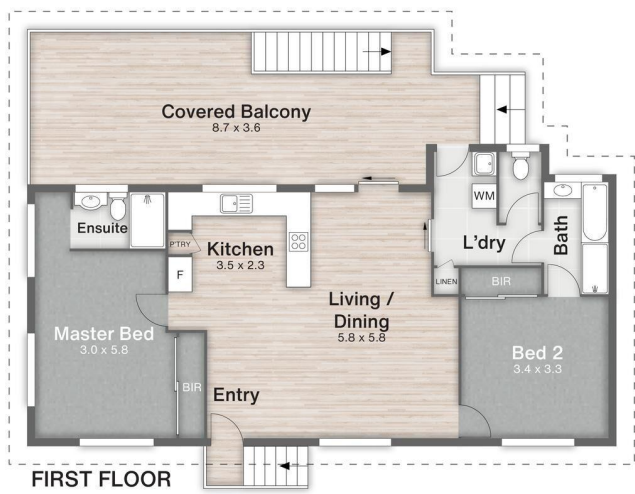
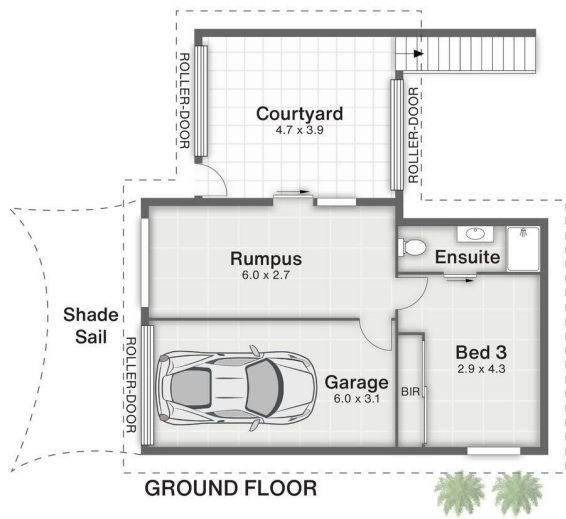
Sales & Marketing Specialist | lee-anne@ljhookersgc.com.au

LJ Hooker Southern Gold Coast (07) 5534 4033

Shop 2, 10 Fifth Avenue, PALM BEACH QLD 4221
southerngoldcoast.ljhooker.com.au | enquiries@ljhookersgc.com.au



All information contained therein is gathered from relevant third parties sources.
We cannot guarantee or give any warranty about the information provided.
Interested parties must rely solely on their own enquiries.



14 Kalmia Court **ELANORA**

LJ Hooker

Southern Gold Coast

3 | 2 | 1 | 202m²

All dimensions are approximate; they are subject to errors and inaccuracies and no liability will be accepted. Plans are shown for marketing purposes only.

LJ Hooker

All information contained therein is gathered from relevant third parties sources. We cannot guarantee or give any warranty about the information provided. Interested parties must rely solely on their own enquiries.

LJ Hooker