

Elanora, 1/21 Rees Court

SOLD BY SEBASTIAN JACOBSON



Welcome to 1/21 Rees Court, Elanora-A beautifully presented and architecturally designed duplex nestled at the end of a quiet, family-friendly cul-de-sac. This stylish home offers the perfect balance of comfort, privacy, and low-maintenance living; ideal for families, first-home buyers, or investors looking to secure a quality property in a highly sought-after location.

Property Features:

- *Master suite with large ensuite and built-in wardrobe
- *Two spacious bedrooms with ceiling fans and built-in wardrobes
- *Open-plan modern kitchen with stone benchtops, stainless steel appliances
- *Split-cycle air conditioning and ceiling fans throughout
- *Separate bathroom with bath and additional powder room
- *Large covered alfresco area with low maintenance mod wood decking
- *Private and fully fenced backyard, perfect for children and pets to play

For Sale
Contact Agent

View
ljhooker.com.au/1TGYF47

Contact
Sebastian Jacobson
0433 971 774
sebastian@ljhookersgc.com.au

LJ Hooker

Disclaimer: All information contained therein is gathered from relevant third parties sources. We cannot guarantee or give any warranty about the information provided. Interested parties must rely solely on their own enquiries.

LJ Hooker Southern Gold Coast
(07) 5534 4033

- *Solar hot water system and 12x solar panels for energy efficiency
- *CrimSafe security screens for added peace of mind
- *Separate laundry
- *Large single garage with internal entry and off-street parking for your second car
- *No body corporate fees; shared building insurance only

Located just moments from parks, 19th Avenue shops, The Pines Shopping Centre, and local beaches, this home offers convenience at your doorstep. With easy access to bike tracks leading to Palm Beach and within close proximity to Elanora State Schools and childcare centres, 1/21 Rees Court is perfectly positioned for relaxed, family living.

Don't miss your chance to secure this stunning home in a prime Elanora location!

Rental Return: \$880 - \$930 pw approx
 Water rates: \$1460.00 per year approx
 Council rates: \$2050.00 per year approx
 No body corporate fees; shared building insurance only

Disclaimer:

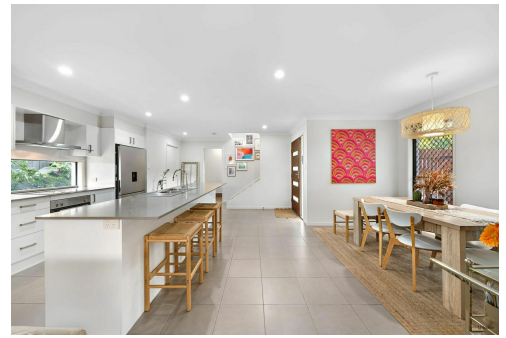
All information (including but not limited to the property area, floor size, price, address and general property description) is provided as a convenience to you, and has been provided to LJ Hooker by third parties. LJ Hooker is unable to definitively confirm whether the information listed is correct or 100% accurate. LJ Hooker does not accept any liability (direct or indirect) for any injury, loss, claim, damage or any incidental or consequential damages, including but not limited to lost profits or savings, arising out of or in any way connected with the use of any information, or any error, omission or defect in the information, contained on the Website. Information contained on the Website should not be relied upon and you should make your own enquiries and seek legal advice in respect of any property on the Website. Prices displayed on the Website are current at the time of issue, but may change.

More About this Property

Property ID	1TGYF47
Property Type	DuplexSemi-detached
Including	Ensuite Toilets (1)

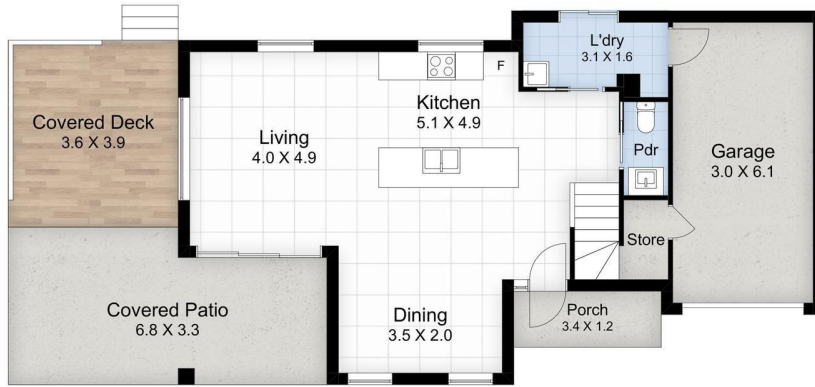
Sebastian Jacobson 0433 971 774
 Sales & Marketing Specialist | sebastian@ljhookersgc.com.au

LJ Hooker Southern Gold Coast (07) 5534 4033
 Shop 2, 10 Fifth Avenue, PALM BEACH QLD 4221
southerngoldcoast.ljhooker.com.au | enquiries@ljhookersgc.com.au



Disclaimer: All information contained therein is gathered from relevant third parties sources. We cannot guarantee or give any warranty about the information provided. Interested parties must rely solely on their own enquiries.

**LJ Hooker Southern Gold Coast
 (07) 5534 4033**



1/21 Rees Court, Elanora

Internal - 136m²

Covered External - 38m²

Total - 174m²

Dimensions are approximate, interested parties should do their own due diligence. The Floor Planners take no responsibilities for inaccurate measurements or errors.

LJ Hooker