

Eight Mile Plains, 6 Skyline Court

A Grand Statement of Elegance & Luxury

Commanding an exclusive position in a peaceful cul-de-sac, this breathtaking double-storey residence is the epitome of grandeur, where classic European-inspired architecture meets refined modern living. With its stately facade, gated entry, and immaculately manicured gardens, this home makes an unforgettable first impression.

Features at a Glance:

- Exceptional Living & Entertaining Spaces - Formal lounge and dining, plus a spacious family room and enclosed entertainment deck.
- Sumptuous Accommodation - Six oversized bedrooms, each with its own ensuite, providing private retreats for family and guests.
- Gourmet Timber Kitchen - Granite benchtops, premium appliances, gas cooktop, and an abundance of storage.
- Luxury Touches Throughout - High ceilings, elegant chandeliers, plush carpets, ducted air-conditioning, and exquisite timber detailing.



Disclaimer: All information contained therein is gathered from relevant third parties sources. We cannot guarantee or give any warranty about the information provided. Interested parties must rely solely on their own enquiries.



For Sale
Please Call

View
ljhooker.com.au/B2X9F4R

Contact
Emily Xiong
0401 056 588
emilyxiong@ljhpp.com.au

LJ Hooker Property Partners
07 3344 0288

- Outdoor Sanctuary - Fully secured fencing with remote-controlled gates, a vast entertainment deck, and beautifully landscaped gardens.

Step inside to soaring ceilings, a sweeping staircase, and a series of lavish living spaces designed for both intimate family moments and grand-scale entertaining. Boasting six bedrooms, six bathrooms, multiple living areas, and elegant finishes throughout, this is a rare opportunity to secure a premier home in one of Eight Mile Plains' most sought-after enclaves.

An Interior of Opulence & Comfort

Inside, the grand foyer welcomes you with a striking chandelier, setting the tone for the elegance that follows. A sweeping staircase ascends to the upper level, where high ceilings and thoughtfully curated lighting create a sophisticated feel. Multiple living areas include a formal lounge with plush carpeting, a stylish dining area, and a relaxed family room - all designed to cater to the lifestyle needs of a growing or multi-generational family.

The Heart of the Home - A Chef's Dream Kitchen

The magnificent timber kitchen is both timeless and functional, featuring a wrap-around granite benchtop, ample cabinetry, and premium stainless steel appliances. With a gas cooktop, breakfast bar, and seamless flow to the dining and outdoor areas, this space is perfect for both casual meals and elegant dinner parties.

A Luxurious Retreat for the Whole Family

Each of the five oversized bedrooms is a haven of comfort, offering plush carpets, built-in wardrobes, and an abundance of natural light. Every bedroom enjoys the privacy of its own ensuite, while the master suite is a true sanctuary, featuring a private sitting area, a deluxe spa ensuite, and a spacious walk-in robe.

A Private Outdoor Escape

Step outside to discover a vast, enclosed entertainment deck, perfect for alfresco dining or hosting lavish gatherings. The backyard is beautifully manicured with lush greenery, providing a serene setting for relaxation. With fully secured fencing and remote-controlled gate access, this residence offers both prestige and peace of mind.

Unmatched Location & Convenience

Positioned within minutes of local shops, top-rated schools, and major transport routes, this home offers both tranquility and connectivity. The Warrigal Road school precinct is just a short stroll away, while easy access to the Gateway and Pacific Motorways ensures seamless travel to the city and beyond.

Additional Features:

- Ducted air-conditioning & secure remote-controlled gates
- Elegant chandeliers & feature lighting throughout
- Spacious double garage with ample storage
- Study or 6th bedroom

This is a rare opportunity to own a statement home of this caliber in a blue-chip location. Contact Emily Xiong today to arrange your exclusive inspection.

All information contained herein is gathered from sources we consider to be reliable.



LJ Hooker Property Partners
07 3344 0288

Disclaimer: All information contained therein is gathered from relevant third parties sources. We cannot guarantee or give any warranty about the information provided. Interested parties must rely solely on their own enquiries.

However, we cannot guarantee or give any warranty about the information provided and interested parties must solely rely on their own enquiries.

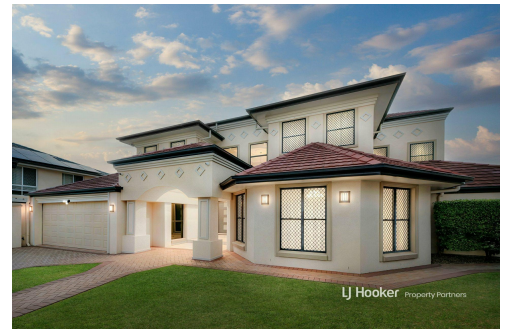
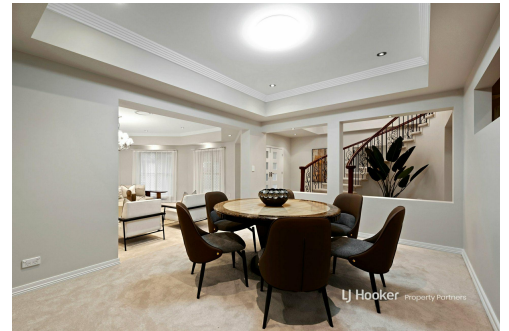
Asia-Pacific Group (Australia) Pty Ltd with Sunnybank Districts P/L T/A LJ Hooker Property Partners
ABN 39 831 978 227 / 21 107 068 020

More About this Property

Property ID	B2X9F4R
Property Type	House
Land Area	605 m2
Including	Study Air Conditioning Dishwasher Built-in-Robes Secure Parking Fully Fenced Remote Garage

Emily Xiong 0401 056 588
Agent/Independent Contractor | emilyxiong@ljhpp.com.au

LJ Hooker Property Partners 07 3344 0288
25 Pinelands Road, SUNNYBANK HILLS QLD 4109
propertypartners.ljhooker.com.au | sunnybankhills@ljhpp.com.au



LJ Hooker Property Partners
07 3344 0288

Disclaimer: All information contained therein is gathered from relevant third parties sources. We cannot guarantee or give any warranty about the information provided. Interested parties must rely solely on their own enquiries.

