



10 Trevi Close, Eight Mile Plains

Substantial Space for the Whole Family with Warrigal Walkability

Imagine a life where the morning school run doesn't involve fighting for a parking spot, and running out of milk doesn't mean starting the car. What if you could stroll to the highly coveted Warrigal Road State School, grab your morning coffee, and hit the local shops - all in a seamless 15-minute walk from your front doorstep? Do all that and more when you secure this stunning lowset in one of the best pockets of Eight Mile Plains.

Highlights:

- Lovingly maintained lowset expertly crafted with high-end appointments.
- Front office or fifth bedroom to easily accommodate either five true bedrooms or four plus a dedicated workspace.
- Unrivalled floorplan versatility featuring children's wing separate from master suite; Master with luxury ensuite and walk-in robe.
- Massive open-plan lounge/dining zone that transitions to a private undercover patio and a sunny, child-friendly backyard.
- Within easy walking distance to schools, local shopping centres, and high-frequency bus stations.

Experience a layout where every member of the family is given their own designated space. As you enter, the wide entryway guides you to

5 🏠 2 🚗 2 🚗

FOR SALE

For Sale

VIEW

Wed 17th Jun @ 6:00PM - 6:30PM

AGENTS

Alan Gu
0430 376 232
alangu@ljhsbh.com.au

Leah Li
0466 999 258
leahli@ljhpp.com.au

AGENCY

LJ Hooker Property Partners
07 3344 0288

All information contained therein is gathered from relevant third parties sources.
We cannot guarantee or give any warranty about the information provided.
Interested parties must rely solely on their own enquiries.

 **LJ Hooker**

an expansive, open-concept living and dining area. Perfectly framed by large windows, this sprawling zone acts as the formal and informal heart of the home, drawing in natural light while staying climate-controlled by premium ducted heating and cooling.

The chef's kitchen seamlessly integrates with the living areas, boasting high-quality finishes, a central island configuration, and an oversized walk-in pantry. Whether you are prepping mid-week family dinners or catering to a crowd, this kitchen keeps you right in the centre of the action.

The clever architectural design prioritises parental privacy without sacrificing supervision. Tucked away at the rear, the master suite is a genuine sanctuary, complete with its own private ensuite, a generous walk-in robe, and direct views out to the backyard.

Meanwhile, the children's wing is a masterclass in functional family design. Three oversized additional bedrooms, each complete with built-in robes, revolve around a massive central rumpus/children's retreat. This ensures the kids have their own dedicated space for gaming, homework, or movie nights, completely separate from the main living area.

Need to work from home? A massive office sits privately at the front of the home, easily doubling as a 5th bedroom if required.

Outside, the property transitions into an entertainer's paradise. The main living zone and the master bedroom open directly onto a huge under-roof alfresco courtyard. This private outdoor room is perfect for weekend BBQs, watching the afternoon sunset, or dining alfresco while keeping a watchful eye on kids and pets playing in the fully fenced backyard.

Other features:

- Crimsafe screens throughout
- New plantation shutters in all bedrooms
- 5.2kW solar panels
- Ample storage and shed

Situated in a highly sought-after, quiet residential pocket, 10 Trevi Close places your family right on the doorstep of premium local schools, vibrant shopping hubs, parklands, and transit options.

- 300m - Bus Stop
- 550m - Runcorn Plaza
- 850m - Warrigal Road State School and Warrigal Square
- 900m - Daw Road Park
- 950m - Runcorn State High School
- 1.4km - Runcorn Pool
- 2.1km - Runcorn train station
- 2.9km - Pinelands Plaza
- 3.2km - Market Square
- 3.5km - Westfield Mt Gravatt

Ready and waiting for its next chapter, make this beauty the start of a new adventure for your family! Call today to get yourself ready for the upcoming auction!

All information contained herein is gathered from sources we consider to be reliable. However, we cannot guarantee or give any warranty about the information provided and interested parties must solely rely on their own enquiries.

The Liu Pty Ltd with Sunnybank Districts P/L T/A LJ Hooker Property Partners
ABN 60 625 175 849 / 21 107 068 020

MORE DETAILS

Property ID B4UGF4R
Property Type House
Land Area 625 m2
Including Air Conditioning
Ducted Cooling
Ducted Heating
Toilets (2)
Built-in-Robes
Remote Garage

Alan Gu 0430 376 232

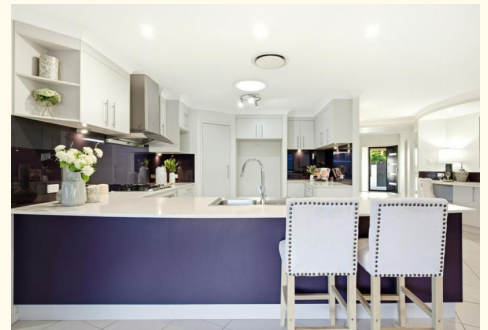
Agent with Zora Liu | alangu@ljhsbh.com.au

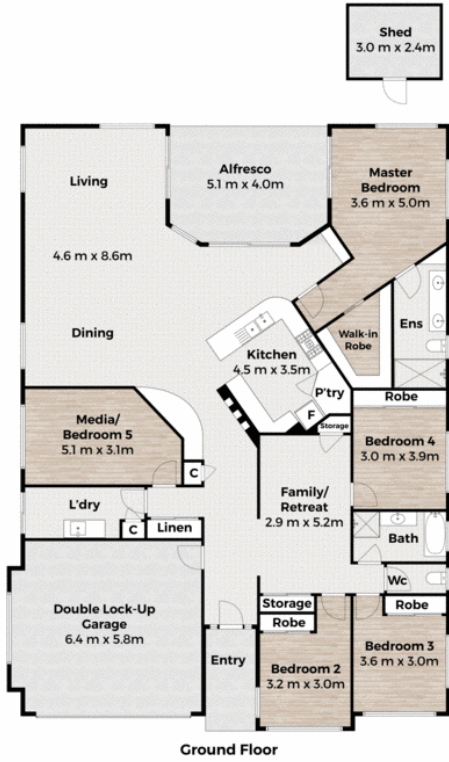
Leah Li 0466 999 258

Sales Associate to Alan Gu | leahli@ljhpp.com.au

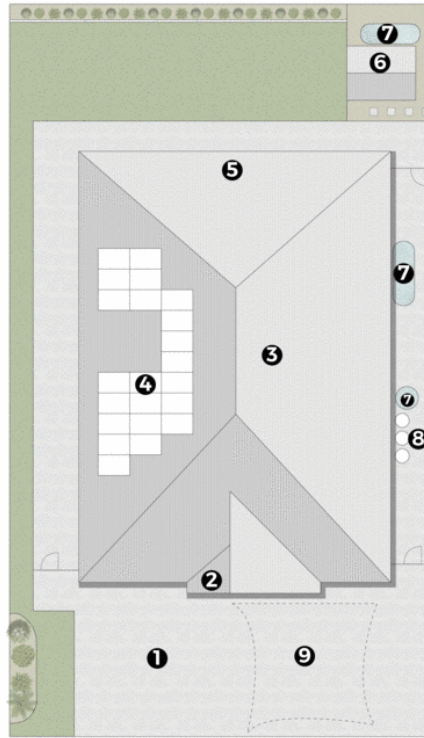
LJ Hooker Property Partners 07 3344 0288

25 Pinelands Road, SUNNYBANK HILLS QLD 4109
propertypartners.ljhooker.com.au | sunnybankhills@ljhpp.com.au





Ground Floor



Site Plan

- 1. Driveway
- 2. Porch
- 3. Residence
- 4. Solar Panels
- 5. Alfresco
- 6. Shed
- 7. Wt
- 8. Gas
- 9. Shade Sail

5 2 4 280sqm 624sqm



Scale in meters. Indicative only. Dimensions are approximate.
All information contained herein is gathered from sources we believe to be reliable.
However, we cannot guarantee its accuracy and interested persons should rely on their own enquiries.